

# IKA®

## Product Overview 2013/2



designed  
to work perfectly

**IKA®-Werke GmbH & Co. KG in Staufen, Germany can now look back on a century of history.**

The company, which was founded in 1910 as a distributor for pharmacies and hospitals, relocated from bombed-out Cologne to Staufen in 1942. There it quickly became the global market leader for laboratory technology as well as dispersing, stirring, and kneading instruments. Today, IKA® employs over 800 people at eight different locations on four continents.

IKA® laboratory technology offers a vast spectrum of innovative devices for numerous applications in research and development. For mixing, tempering, distilling or crushing, market leaders in varying fields of application rely on IKA®'s innovative and proven technology.

For more information, please visit:  
**www.ika.com**



[www.facebook.com/IKAworldwide](http://www.facebook.com/IKAworldwide)

**Mixing**

- Magnetic Stirrers Page 4
- Overhead Stirrers Page 24
- Shakers Page 32

**Crushing**

- Dispersers Page 44
- Mills Page 52

**Heating / Tempering**

- Dry Block Heaters Page 56
- Hotplates Page 58
- Thermostats Page 60

**Separation**

- Centrifuge Page 64
- Rotary Evaporators Page 65

**Laboratory Reactors**

- Packages Page 72

**Liquid Handling**

- Pipettes Page 77

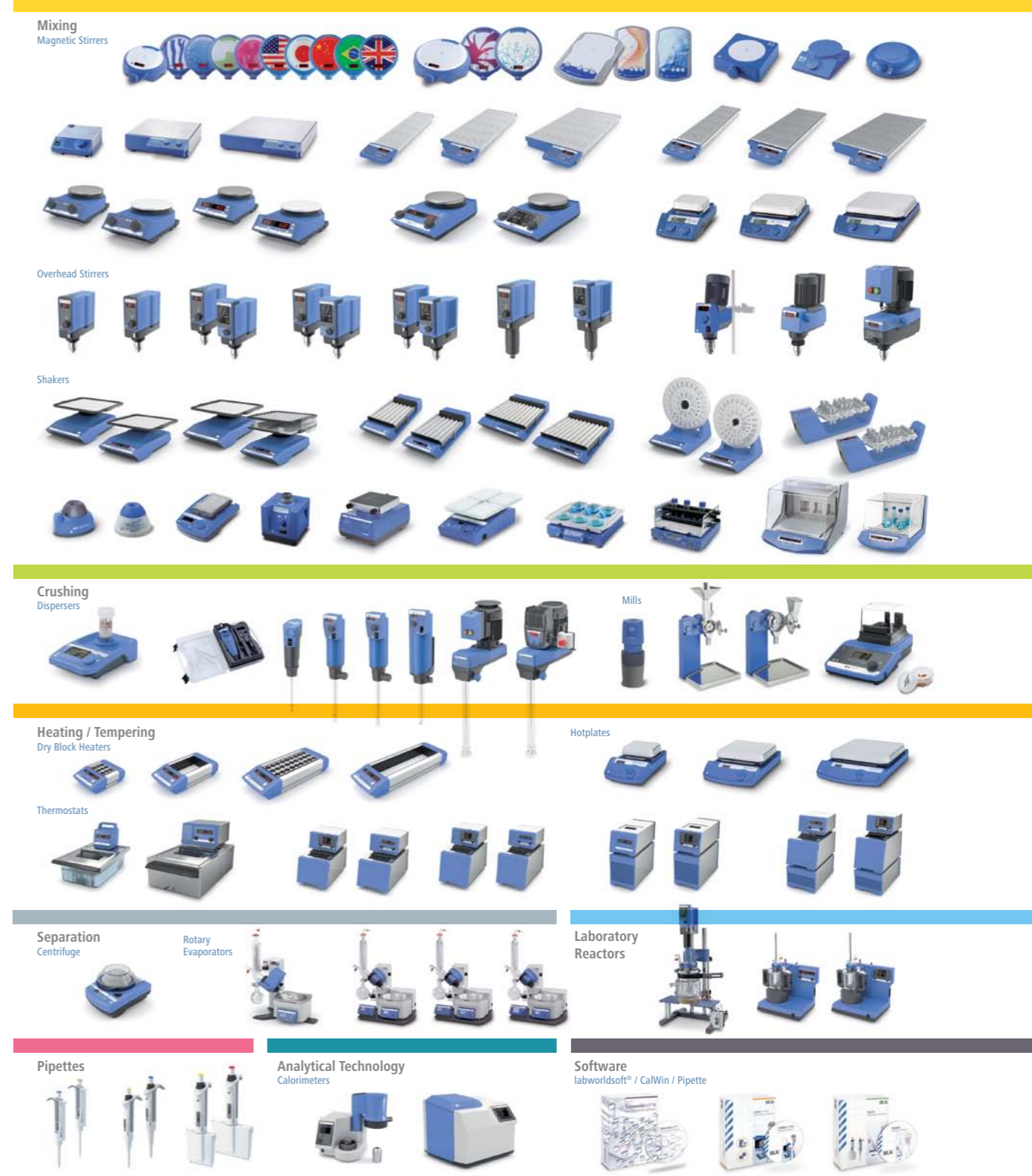
**Analytical Technology**

- Calorimeters Page 84

**Software**

- labworldsoft Page 82
- CalWin Page 88
- Pipette Calibration Page 77

AVAILABLE 2014





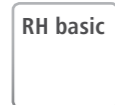
# Magnetic stirrers with heating



Adjustable safety temperature



DIN Bushing 12878 for connecting an electronic contact thermometer



RH basic



RH basic/digital with white coated heating plate!

- > Offers excellent chemical resistance
- > Easy to clean

## Technical data

Max. stirring quantity (H<sub>2</sub>O)  
Motor rating input / output  
Speed range  
Speed display  
Heat output  
Temperature range  
Max. magnetic bar (L x Ø)  
Safety circuit  
Control accuracy with sensor

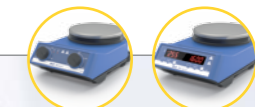
Heating plate material  
Dimensions  
Weight

### RH basic | RH basic white

15 l  
15 / 2 W  
50 – 2000 rpm  
scale  
600 W  
50 – 320 °C  
80 mm  
50 – 370 °C  
ETS-D5: ± 0.5 K  
ETS-D6: ± 0.2 K  
stainless steel 1.4301 | white ceramic  
Ø 135 mm  
2 kg  
Ident. No. 0005019700  
Ident. No. 0005029700

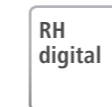
### RH digital | RH digital white

15 l  
15 / 2 W  
50 – 2000 rpm  
LED  
600 W  
50 – 320 °C  
80 mm  
50 – 370 °C  
ETS-D5: ± 0.5 K  
ETS-D6: ± 0.2 K  
stainless steel 1.4301 | white ceramic  
Ø 135 mm  
2 kg  
Ident. No. 0005019800  
Ident. No. 0004678000



IKA<sup>+</sup>

The convenient carrying handle and the compact design makes the unit ultra-portable and offers easy transportation



RH digital



Hot Top indicator to prevent burns



Digital display for precise monitoring of speed and temperature



DIN Bushing 12878 for connecting an electronic contact thermometer



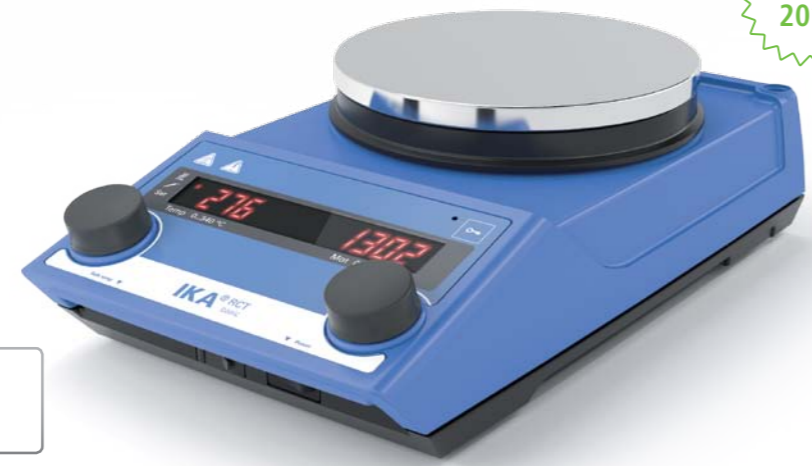
For accessories, see pages 16-23

# Magnetic stirrers with heating

Available 2014



RCT basic



Hot Top indicator to prevent burns



Digital display for precise monitoring of speed and temperature



USB interface to control and document rheological changes and other parameters using labworldsoft® software and for updating your firmware



Integrated temperature sensor for precise temperature control



DIN Bushing 12878 for connecting an electronic contact thermometer



RS 232 interface for PC connection



Integrated temperature sensor for precise temperature control



Integrated weighing function with max. weighing range of up to 2 kg



BNC socket to connect a pH electrode

RET control

Available 2014



## RCT Synthesis Package 1 Quarter System & RCT Synthesis Package 2 Reaction Block System

- > Multiple synthesis with only one magnetic stirrer
- > Uniform mixing in every vessel
- > High-precision thermal conduction directly into the quarters

Package details on page 90

Technical data	
Max. stirring quantity (H <sub>2</sub> O)	20 l
Motor rating input / output	16 / 9 W
Speed range	50 – 1500 rpm
Heat output	600 W
Temperature range	RT – 310 °C
Adjustable safety circuit	50 – 360 °C
Control accuracy with sensor	PT 1000: ± 1 K ETS-D5: ± 0.5 K   ETS-D6: ± 0.2 K
Heating plate material	aluminum alloy
Heating plate dimensions	Ø 135 mm
Dimensions (W x D x H)	160 x 270 x 85 mm
Weight	2.5 kg

RCT basic safety control	
Max. stirring quantity (H <sub>2</sub> O)	20 l
Motor rating input / output	16 / 9 W
Speed range	50 – 1500 rpm
Heat output	600 W
Temperature range	RT – 310 °C
Adjustable safety circuit	50 – 360 °C
Control accuracy with sensor	PT 1000: ± 1 K ETS-D5: ± 0.5 K   ETS-D6: ± 0.2 K
Heating plate material	aluminum alloy
Heating plate dimensions	Ø 135 mm
Dimensions (W x D x H)	160 x 270 x 85 mm
Weight	2.5 kg

RCT basic	
replaces RCT basic safety control	
Max. stirring quantity (H <sub>2</sub> O)	20 l
Motor rating input / output	16 / 9 W
Speed range	50 – 1500 rpm
Heat output	600 W
Temperature range	RT – 340 °C
Adjustable safety circuit	50 – 370 °C
Control accuracy with sensor	PT 1000: ± 1 K ETS-D5: ± 0.5 K   ETS-D6: ± 0.2 K
Heating plate material	aluminum
Heating plate dimensions	Ø 135 mm
Dimensions (W x D x H)	160 x 270 x 85 mm
Weight	3 kg

RET basic safety control	
Max. stirring quantity (H <sub>2</sub> O)	20 l
Motor rating input / output	16 / 9 W
Speed range	50 – 1700 rpm
Heat output	600 W
Temperature range	RT – 340 °C
Adjustable safety circuit	50 – 360 °C
Control accuracy with sensor	PT 1000: ± 1 K ETS-D5: ± 0.5 K   ETS-D6: ± 0.2 K
Heating plate material	aluminum
Heating plate dimensions	Ø 135 mm
Dimensions (W x D x H)	160 x 270 x 95 mm
Weight	2.5 kg

Technical data	
Max. stirring quantity (H <sub>2</sub> O)	20 l
Motor rating input / output	12 / 5 W
Speed range	0 – 1200 rpm
Heat output	600 W
Temperature range	RT – 340 °C
Adjustable safety circuit	50 – 350 °C
Control accuracy with sensor	± 0.2 K
Heating plate material	stainless steel
Heating plate dimensions	Ø 135 mm
Dimensions (W x D x H)	160 x 280 x 97 mm
Weight	2.8 kg

RET control/t	
Max. stirring quantity (H <sub>2</sub> O)	20 l
Motor rating input / output	12 / 5 W
Speed range	0 – 1200 rpm
Heat output	600 W
Temperature range	RT – 340 °C
Adjustable safety circuit	50 – 350 °C
Control accuracy with sensor	± 0.2 K
Heating plate material	stainless steel
Heating plate dimensions	Ø 135 mm
Dimensions (W x D x H)	160 x 280 x 97 mm
Weight	2.8 kg

RET control   RET control white	
replaces RET basic; RET control/t	
Max. stirring quantity (H <sub>2</sub> O)	20 l
Motor rating input / output	16 / 9 W
Speed range	50 – 1700 rpm
Heat output	600 W
Temperature range	RT – 340 °C
Adjustable safety circuit	50 – 370 °C
Control accuracy with sensor	PT 100: ± 0.2 K
Heating plate material	stainless steel 1.4301   white ceramic
Heating plate dimensions	Ø 135 mm
Dimensions (W x D x H)	160 x 270 x 85 mm
Weight	3 kg



## RET control with white coated heating plate!

- > Offers excellent chemical resistance
- > Easy to clean

RCT basic safety control  
Ident. No. 0003810000\*  
RCT Synthesis Package 1  
Ident. No. 0008039600\*  
RCT Synthesis Package 2  
Ident. No. 0008039700\*

\* PT 1000.60 included in delivery.

For accessories, see pages 16-23



# Magnetic stirrers with heating



-  DIN Bushing 12878 for connecting an electronic contact thermometer (Available only for C-MAG HS 7 & 10)
-  Hot Top indicator to prevent burns
-  Elevated control panel for protection against spilled liquids
-  C-MAG HS 7



## Technical data

Max. stirring quantity (H <sub>2</sub> O)	5 l
Motor rating input / output	15 / 1.5 W
Speed range	100 – 1500 rpm
Speed display	scale
Heat output	250 W
Temperature range	50 – 500 °C
Max. magnetic bar (L x Ø)	30 x 8 mm
Safety circuit	550 °C (fixed)
Control accuracy with sensor	–
Heating plate material	glass ceramic
Dimensions	100 x 100 mm
Weight	3 kg

## C-MAG HS 4

Max. stirring quantity (H <sub>2</sub> O)	5 l
Motor rating input / output	15 / 1.5 W
Speed range	100 – 1500 rpm
Speed display	scale
Heat output	250 W
Temperature range	50 – 500 °C
Max. magnetic bar (L x Ø)	30 x 8 mm
Safety circuit	550 °C (fixed)
Control accuracy with sensor	–
Heating plate material	glass ceramic
Dimensions	100 x 100 mm
Weight	3 kg
Ident. No.	0003581000

## C-MAG HS 7


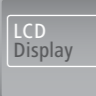


Max. stirring quantity (H <sub>2</sub> O)	10 l
Motor rating input / output	15 / 1.5 W
Speed range	100 – 1500 rpm
Speed display	scale
Heat output	1000 W
Temperature range	50 – 500 °C
Max. magnetic bar (L x Ø)	80 x 10 mm
Safety circuit	550 °C (fixed)
Control accuracy with sensor	ETS-D5 / ± 0.5 K
Heating plate material	glass ceramic
Dimensions	180 x 180 mm
Weight	5 kg
Ident. No.	0003581200
C-MAG HS 7 Package	
Ident. No.	0009015900

## C-MAG HS 10

Max. stirring quantity (H <sub>2</sub> O)	15 l
Motor rating input / output	15 / 1.5 W
Speed range	100 – 1500 rpm
Speed display	scale
Heat output	1500 W
Temperature range	50 – 500 °C
Max. stirring bar length	80 x 10 mm
Adjustable safety circuit	550 °C (fixed)
Control accuracy with sensor	ETS-D5 / ± 0.5 K
Set-up plate material	glass ceramic
Set-up plate dimensions	260 x 260 mm
Weight	6 kg
Ident. No.	0003581400

Package details on page 90



-  Hot Top indicator to prevent burns
-  LCD Display for simultaneous display of target and actual temperatures
-  Elevated control panel for protection against spilled liquids
-  Integrated temperature sensor for precise temperature control

C-MAG HS 7 digital

PT 1000.60

## Technical data

Max. stirring quantity (H <sub>2</sub> O)	5 l
Motor rating input / output	15 / 1.5 W
Speed range	100 – 1500 rpm
Speed display	scale
Heat output	250 W
Temperature range	50 – 500 °C
Max. stirring bar length	30 mm
Adjustable safety circuit	550 °C (fixed)
Control accuracy with sensor	± 0.5 K
Set-up plate material	ceramic
Set-up plate dimensions	100 x 100 mm
Weight	3 kg

## C-MAG HS 4 digital

Max. stirring quantity (H <sub>2</sub> O)	5 l
Motor rating input / output	15 / 1.5 W
Speed range	100 – 1500 rpm
Speed display	scale
Heat output	250 W
Temperature range	50 – 500 °C
Max. stirring bar length	30 mm
Adjustable safety circuit	550 °C (fixed)
Control accuracy with sensor	± 0.5 K
Set-up plate material	ceramic
Set-up plate dimensions	100 x 100 mm
Weight	3 kg
Ident. No.	0004240200*

## C-MAG HS 7 digital

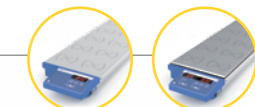
Max. stirring quantity (H <sub>2</sub> O)	10 l
Motor rating input / output	15 / 1.5 W
Speed range	100 – 1500 rpm
Speed display	scale
Heat output	1000 W
Temperature range	50 – 500 °C
Max. stirring bar length	80 mm
Adjustable safety circuit	550 °C (fixed)
Control accuracy with sensor	± 0.5 K
Set-up plate material	ceramic
Set-up plate dimensions	180 x 180 mm
Weight	5 kg
Ident. No.	0004240200*

## C-MAG HS 10 digital

Max. stirring quantity (H <sub>2</sub> O)	15 l
Motor rating input / output	15 / 1.5 W
Speed range	100 – 1500 rpm
Speed display	scale
Heat output	1500 W
Temperature range	50 – 500 °C
Max. stirring bar length	80 mm
Adjustable safety circuit	550 °C (fixed)
Control accuracy with sensor	± 0.5 K
Set-up plate material	ceramic
Set-up plate dimensions	260 x 260 mm
Weight	6 kg
Ident. No.	0004240400*

\* PT 1000.60 included in delivery  
For accessories, see pages 16-23

# Multiposition stirrers with and without heating



Heating foil for homogeneous temperature distribution of the heating plate



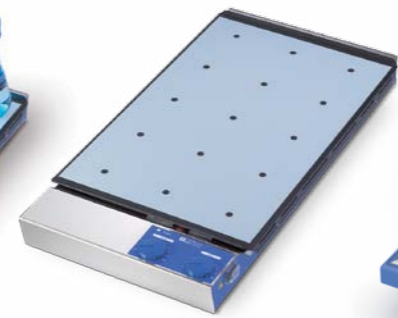
Reverse rotation switch for better mixing results



Wear-free magnetic coils for consistent and silent operation



Available 2014



Available 2014

Available 2014



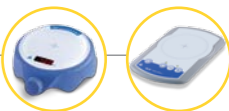
Technical data	RO 5	RO 10	RO 15	RT 5 power
Number of stirring positions	5	10	15	5
Max. stirring quantity (H <sub>2</sub> O)	0.4 l	0.4 l	0.4 l	0.4 l
Distance between stirring places	90 mm	90 mm	90 mm	90 mm
Deviation for individual stirring positions	0%	0%	0%	5%
Speed display	LED	LED	LED	scale
Speed range	0 – 1200 rpm	0 – 1200 rpm	0 – 1200 rpm	0 – 1100 rpm
Speed adjustment	10 rpm steps	10 rpm steps	10 rpm steps	scale
Max. stirring bar length	30 mm	30 mm	30 mm	30 mm
Set-up plate material	stainless steel 1.4301	stainless steel 1.4301	stainless steel 1.4301	silicone
Set-up plate dimensions	120 x 470 mm	190 x 470 mm	280 x 470 mm	120 x 450 mm
Dimensions (W x D x H)	120 x 570 x 60 mm	190 x 570 x 60 mm	280 x 570 x 60 mm	138 x 552 x 65 mm
Weight	3 kg	5 kg	7 kg	3 kg
	Ident. No. 0003690500	Ident. No. 0003691000	Ident. No. 0003692500	Ident. No. 0002930300

RT 10 power	RT 15 power	RT 5	RT 10	RT 15
10	15	replaces RT 5 power	replaces RT 10 power	replaces RT 15 power
0.4 l	0.4 l	0.4 l	0.4 l	0.4 l
90 mm	90 mm	90 mm	90 mm	90 mm
5%	5%	0%	0%	0%
scale	scale	LED	LED	LED
0 – 1100 rpm	0 – 1100 rpm	0 – 1000 rpm	0 – 1000 rpm	0 – 1000 rpm
scale	scale	10 rpm steps	10 rpm steps	10 rpm steps
30 mm	30 mm	30 mm	30 mm	30 mm
silicone	silicone	aluminum alloy	aluminum alloy	aluminum alloy
180 x 450 mm	270 x 450 mm	110 x 495 mm	180 x 495 mm	270 x 495 mm
198 x 552 x 65 mm	288 x 552 x 65 mm	120 x 610 x 60 mm	190 x 610 x 60 mm	280 x 610 x 60 mm
4.2 kg	6 kg	4 kg	7.5 kg	10.5 kg
Ident. No. 0002930500	Ident. No. 0002930700	Ident. No. 0003690600	Ident. No. 0003691100	Ident. No. 0003692600

For accessories, see pages 16-23



# Magnetic stirrers without heating



color squid

Electronically controlled, high power motor for a higher capacity and higher speed range

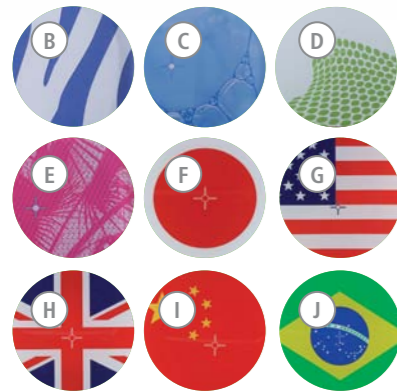
Glass plate for excellent chemical resistance to acids, bases and solvents

The digital display enables precise setting of speed

IKA+

The difference between the color squid and the big squid is the **set-up plate diameter**.

color squid: Ø 115 mm  
big squid: Ø 160 mm



## Technical data

Max. stirring quantity (H <sub>2</sub> O)	1 l
Motor rating input / output	3 / 2 W
Speed range	0 – 2500 rpm
Speed display	LED
Max. stirring bar length	30 mm
Speed adjustment	50 rpm steps
Set-up plate material	glass
Set-up plate dimensions	Ø 115 mm
Dimensions (W x D x H)	145 x 160 x 45 mm
Weight	0.54 kg
Permissible ambient temperature	5 – 40 °C
Permissible relative moisture	80%
Protection class acc. to DIN EN 60529	IP 54
Voltage	100 – 240 V
Frequency	50/60 Hz

color squid	1 l
Motor rating input / output	3 / 2 W
Speed range	0 – 2500 rpm
Speed display	LED
Max. stirring bar length	30 mm
Speed adjustment	50 rpm steps
Set-up plate material	glass
Set-up plate dimensions	Ø 115 mm
Dimensions (W x D x H)	145 x 160 x 45 mm
Weight	0.54 kg
Permissible ambient temperature	5 – 40 °C
Permissible relative moisture	80%
Protection class acc. to DIN EN 60529	IP 54
Voltage	100 – 240 V
Frequency	50/60 Hz

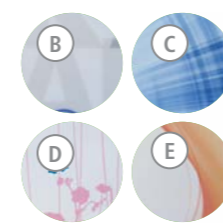
big squid	1.5 l
Motor rating input / output	3 / 2 W
Speed range	0 – 2500 rpm
Speed display	LED
Max. stirring bar length	30 mm
Speed adjustment	50 rpm steps
Set-up plate material	glass
Set-up plate dimensions	Ø 160 mm
Dimensions (W x D x H)	180 x 195 x 40 mm
Weight	0.7 kg
Permissible ambient temperature	5 – 40 °C
Permissible relative moisture	80%
Protection class acc. to DIN EN 60529	IP 54
Voltage	100 – 240 V
Frequency	50/60 Hz

Mini MR standard	1 l
Motor rating input / output	3 / 2 W
Speed range	0 – 2500 rpm
Speed display	–
Max. stirring bar length	30 mm
Speed adjustment	–
Set-up plate material	polyester
Set-up plate dimensions	115 x 115 mm
Dimensions (W x D x H)	114 x 127 x 37 mm
Weight	0.25 kg
Permissible ambient temperature	5 – 40 °C
Permissible relative moisture	80%
Protection class acc. to DIN EN 60529	IP 42
Voltage	100 – 240 V
Frequency	50/60 Hz

- A Ident. No. 0003671000 white
- B Ident. No. 0003698200 zebra
- C Ident. No. 0003698300 bubbles
- D Ident. No. 0003698400 wave
- E Ident. No. 0003698500 palm tree
- F Ident. No. 0004175300 solar sphere
- G Ident. No. 0004175100 Stars and Stripes
- H Ident. No. 0004175200 Union Jack
- I Ident. No. 0004175400 red flag
- J Ident. No. 0004175500 Seleção

- A Ident. No. 0003672000 white
- B Ident. No. 0003857200 frozen
- C Ident. No. 0003857400 hibiscus
- D Ident. No. 0003857300 twist
- E Ident. No. 0003857100 leaves

Ident. No. 0003674000



lab disc

Automatic reverse rotation every 30 seconds

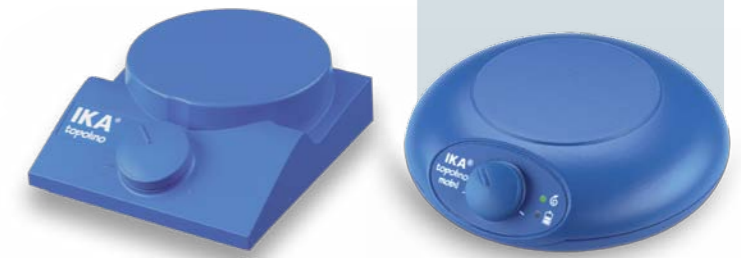


Ultra-flat for stirring quantities of up to 800 ml (H<sub>2</sub>O)

Modern wear-free magnetic coil technology

IKA+

Portable unit with rechargeable batteries with long operating time (8-12 h)



## Technical data

Max. stirring quantity (H <sub>2</sub> O)	0.8 l
Motor rating input / output	5 / 3 W
Speed range	15 – 1500 rpm
Speed display	–
Max. stirring bar length	25 mm
Speed adjustment	stepless
Set-up plate material	polyester
Set-up plate dimensions	Ø 100 mm
Dimensions (W x D x H)	117 x 180 x 12 mm
Weight	0.3 kg
Permissible ambient temperature	5 – 40 °C
Permissible relative moisture	80%
Protection class acc. to DIN EN 60529	IP 65
Voltage	100 – 240 V
Frequency	50/60 Hz

lab disc	0.8 l
Motor rating input / output	5 / 3 W
Speed range	15 – 1500 rpm
Speed display	–
Max. stirring bar length	25 mm
Speed adjustment	stepless
Set-up plate material	polyester
Set-up plate dimensions	Ø 100 mm
Dimensions (W x D x H)	117 x 180 x 12 mm
Weight	0.3 kg
Permissible ambient temperature	5 – 40 °C
Permissible relative moisture	80%
Protection class acc. to DIN EN 60529	IP 65
Voltage	100 – 240 V
Frequency	50/60 Hz

- A Ident. No. 0003907500 white
- B Ident. No. 0003765000 pattern
- C Ident. No. 0003916100 stream
- D Ident. No. 0003920700 meadow
- E Ident. No. 0003920900 maracuja

topolino	0.25 l
Motor rating input / output	1 / 0.8 W
Speed range	300 – 1800 rpm
Speed display	–
Max. stirring bar length	30 mm
Speed adjustment	stepless
Set-up plate material	synthetic (PP)
Set-up plate dimensions	Ø 80 mm
Dimensions (W x D x H)	95 x 115 x 37 mm
Weight	0.32 kg
Permissible ambient temperature	5 – 40 °C
Permissible relative moisture	80%
Protection class acc. to DIN EN 60529	IP 21
Voltage	100 – 240 V
Frequency	50/60 Hz

Ident. No. 0003368000

topolino mobil	0.25 l
Motor rating input / output	1 / 0.8 W
Speed range	300 – 1800 rpm
Speed display	–
Max. stirring bar length	30 mm
Speed adjustment	stepless
Set-up plate material	synthetic (PP)
Set-up plate dimensions	Ø 80 mm
Dimensions (W x D x H)	Ø 140 x 42 mm
Weight	0.60 kg
Permissible ambient temperature	5 – 40 °C
Permissible relative moisture	80%
Protection class acc. to DIN EN 60529	IP 21
Voltage	100 – 240 V
Frequency	50/60 Hz

Ident. No. 0003381300

For accessories, see pages 16-23

# Magnetic stirrers without heating



Maxi MR 1 digital



For stirring quantities up to 150 l (H<sub>2</sub>O)



Infinitely adjustable speed with digital display



Timer or continuous operation



C-MAG MS 10



Ceramic set-up plate offers excellent chemical resistance to acid, bases and solvents



Powerful motor for stirring quantities up to 15 l (H<sub>2</sub>O)



Elevated control panel for protection against spilled liquids



## Technical data

Max. stirring quantity (H <sub>2</sub> O)	5 l
Motor rating input / output	14 / 4 W
Speed range	0 – 1100 rpm
Speed display	scale
Max. stirring bar length	50 mm
Speed adjustment	stepless
Set-up plate material	stainless steel 1.4301
Set-up plate dimensions	140 x 120 mm
Dimensions (W x D x H)	140 x 200 x 75 mm
Weight	1.4 kg
Permissible ambient temperature	5 – 40 °C
Permissible relative moisture	80%
Protection class acc. to DIN EN 60529	IP 21
Voltage	230 V
Frequency	50/60 Hz

## KMO 2 basic

Max. stirring quantity (H <sub>2</sub> O)	5 l
Motor rating input / output	14 / 4 W
Speed range	0 – 1100 rpm
Speed display	scale
Max. stirring bar length	50 mm
Speed adjustment	stepless
Set-up plate material	stainless steel 1.4301
Set-up plate dimensions	140 x 120 mm
Dimensions (W x D x H)	140 x 200 x 75 mm
Weight	1.4 kg
Permissible ambient temperature	5 – 40 °C
Permissible relative moisture	80%
Protection class acc. to DIN EN 60529	IP 21
Voltage	230 V
Frequency	50/60 Hz

Ident. No. 0002812000

## Midi MR 1 digital

Max. stirring quantity (H <sub>2</sub> O)	50 l
Motor rating input / output	70 / 19 W
Speed range	0 – 1000 rpm
Speed display	LCD
Max. stirring bar length	80 mm
Speed adjustment	stepless
Set-up plate material	stainless steel 1.4301
Set-up plate dimensions	350 x 350 mm
Dimensions (W x D x H)	360 x 430 x 110 mm
Weight	10.7 kg
Permissible ambient temperature	5 – 40 °C
Permissible relative moisture	80%
Protection class acc. to DIN EN 60529	IP 21
Voltage	230 V
Frequency	50/60 Hz

Ident. No. 0002621900

## Maxi MR 1 digital

Max. stirring quantity (H <sub>2</sub> O)	150 l
Motor rating input / output	80 / 35 W
Speed range	0 – 600 rpm
Speed display	LCD
Max. stirring bar length	155 mm
Speed adjustment	stepless
Set-up plate material	stainless steel 1.4301
Set-up plate dimensions	500 x 500 mm
Dimensions (W x D x H)	505 x 585 x 110 mm
Weight	16 kg
Permissible ambient temperature	5 – 40 °C
Permissible relative moisture	80%
Protection class acc. to DIN EN 60529	IP 21
Voltage	230 V
Frequency	50/60 Hz

Ident. No. 0002621800

## Technical data

Max. stirring quantity (H <sub>2</sub> O)	5 l
Motor rating input / output	15 / 1.5 W
Speed range	100 – 1500 rpm
Speed display	scale
Max. stirring bar length	30 mm
Speed adjustment	scale (0 – 6)
Set-up plate material	ceramic
Set-up plate dimensions	100 x 100 mm
Dimensions (W x D x H)	150 x 260 x 105 mm
Weight	3 kg
Permissible ambient temperature	5 – 40 °C
Permissible relative moisture	80%
Protection class acc. to DIN EN 60529	IP 21
Voltage	230 V
Frequency	50/60 Hz

## C-MAG MS 4

Max. stirring quantity (H <sub>2</sub> O)	5 l
Motor rating input / output	15 / 1.5 W
Speed range	100 – 1500 rpm
Speed display	scale
Max. stirring bar length	30 mm
Speed adjustment	scale (0 – 6)
Set-up plate material	ceramic
Set-up plate dimensions	100 x 100 mm
Dimensions (W x D x H)	150 x 260 x 105 mm
Weight	3 kg
Permissible ambient temperature	5 – 40 °C
Permissible relative moisture	80%
Protection class acc. to DIN EN 60529	IP 21
Voltage	230 V
Frequency	50/60 Hz

Ident. No. 0003582200

## C-MAG MS 7

Max. stirring quantity (H <sub>2</sub> O)	10 l
Motor rating input / output	15 / 1.5 W
Speed range	100 – 1500 rpm
Speed display	scale
Max. stirring bar length	80 mm
Speed adjustment	scale (0 – 6)
Set-up plate material	ceramic
Set-up plate dimensions	180 x 180 mm
Dimensions (W x D x H)	220 x 330 x 105 mm
Weight	5 kg
Permissible ambient temperature	5 – 40 °C
Permissible relative moisture	80%
Protection class acc. to DIN EN 60529	IP 21
Voltage	230 V
Frequency	50/60 Hz

Ident. No. 0003582400

## C-MAG MS 10

Max. stirring quantity (H <sub>2</sub> O)	15 l
Motor rating input / output	15 / 1.5 W
Speed range	100 – 1500 rpm
Speed display	scale
Max. stirring bar length	80 mm
Speed adjustment	scale (0 – 6)
Set-up plate material	ceramic
Set-up plate dimensions	260 x 260 mm
Dimensions (W x D x H)	300 x 415 x 105 mm
Weight	6 kg
Permissible ambient temperature	5 – 40 °C
Permissible relative moisture	80%
Protection class acc. to DIN EN 60529	IP 21
Voltage	230 V
Frequency	50/60 Hz

Ident. No. 0003582600

For accessories, see pages 16-23



# Magnetic Stirrers | Accessories



## Electronic contact thermometers

- |                                                                                                                                               | Ident. No. |
|-----------------------------------------------------------------------------------------------------------------------------------------------|------------|
| 1 ETS-D5                                                                                                                                      | 0003378000 |
| Electronic contact thermometer, -50 – 450 °C, 0.1 K resolution                                                                                |            |
| 2 ETS-D6                                                                                                                                      | 0003378100 |
| Electronic contact thermometer. Similar to ETS-D5, additionally comes equipped with integrated pH measuring instrument (without pH electrode) |            |

## Temperature sensors for ETS-D5 / D6

- |                                                                          | Ident. No. |
|--------------------------------------------------------------------------|------------|
| 3 H 62.51                                                                | 0002735451 |
| Temperature sensor, stainless steel, Ø 3 mm, 260 mm length               |            |
| 4 H 66.51                                                                | 0002735551 |
| Temperature sensor, stainless steel, glass-coated, Ø 6 mm, 260 mm length |            |
| H 66.53                                                                  | 0004499900 |
| Temperature sensor, coated with SafeCoat, Ø 3 mm, 260 mm length          |            |

## ETS-D5 / D6 Accessories

- |                      | Ident. No. |
|----------------------|------------|
| 5 H 70               | 0002735600 |
| Extension cable, 1 m |            |

## Temperature sensors for RCT / RET basic and C-MAG HS digital series

- |                                                                                  | Ident. No. |
|----------------------------------------------------------------------------------|------------|
| 6 PT 1000.60                                                                     | 0003516800 |
| Temperature sensor, stainless steel, Ø 3 mm, 230 mm length                       |            |
| 7 PT 1000.70                                                                     | 0003736000 |
| Temperature sensor, stainless steel, glass-coated, Ø 7 mm, 230 mm length         |            |
| 8 PT 1000.80                                                                     | 0004443000 |
| Temperature sensor, stainless steel, Ø 3 mm, 150 mm length                       |            |
| PT 1000.90                                                                       | 0004480600 |
| Temperature sensor, stainless steel, coated with SafeCoat, Ø 3 mm, 230 mm length |            |

## Temperature sensors for RET control / t and RET control

- |                                                                                  |            |
|----------------------------------------------------------------------------------|------------|
| 9 PT 100.50                                                                      | 0002601900 |
| Temperature sensor, stainless steel, Ø 3 mm, 230 mm length                       |            |
| 10 PT 1000.50                                                                    | 0003367600 |
| Temperature sensor, dual stainless steel, Ø 3 mm, 230 mm length                  |            |
| 11 PT 1000.51                                                                    | 0003377700 |
| Temperature sensor, dual stainless steel, glass-coated, Ø 3 mm                   |            |
| 12 PT 100.51                                                                     | 0002600300 |
| Temperature sensor, glass-coated, Ø 8 mm, 230 mm length                          |            |
| PT 100.53                                                                        | 0004499700 |
| Temperature sensor, stainless steel, coated with SafeCoat, Ø 3 mm, 230 mm length |            |
| PT 1000.53                                                                       | 0004499800 |
| Temperature sensor, coated with SafeCoat, 230 mm length                          |            |





# Magnetic Stirrers | Accessories



## Oil bath attachments

	Ident. No.
H 29	0002829400

Oil bath attachment, 1 l, aluminum, inner Ø 136-180 mm, 81 mm height for use with oil only

H 30	0002829500
------	------------

Oil bath attachment, 1.5 l, aluminum, inner Ø 136-190 mm, 110 mm height for use with oil only

## Beakers

H 1000	0004444401
--------	------------

Beaker, stainless steel, 1 l, inner Ø 160 mm, 79 mm height

H 1500	0004444501
--------	------------

Beaker, stainless steel, 1.5 l, inner Ø 140 mm, 160 mm height

H 3000	0004444503
--------	------------

Beaker, stainless steel, 3 l, inner Ø 180 mm, 119 mm height

H 5000	0004444505
--------	------------

Beaker, stainless steel, 5 l, inner Ø 220 mm, 142 mm height

H 8000	0004444508
--------	------------

Beaker, stainless steel, 8 l, inner Ø 265 mm, 162 mm height

## Protective covers

H 102	0004281600
-------	------------

Cover for RH basic

H 103	0004299100
-------	------------

Cover for RH digital

H 100	0003661000
-------	------------

Cover for RET basic and RCT basic



10



13



11



14



12



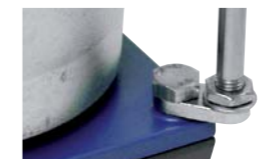
15



16



17



18



19



20



21



22

## Other accessories

H 11 (Euro   USA   UK   CH plug)	0001091500
	0003564500
	0002410700
	0001091600

Mains cable, spare

H 16 V	0001545100
--------	------------

Support rod, Ø 10 mm, 450 mm length

H 16.1	0005000500
--------	------------

Extension for support rod

H 44	0002437700
------	------------

Boss head clamp

H 38	0003547700
------	------------

Holding rod

## Stirring bars

RS 1	0001358600
------	------------

Consisting of IKAFLON® (10 – 80 mm) and TRIKA® (25 and 40 mm) magnetic stirring bars

RS 2	0004499100
------	------------

Consisting of IKAFLON® 40 round, 40 glass, 30 power, 40 slide round, 40 ellipse, 40 TRIKA, 25 cross, 9 crown and 25 bone magnetic stirring bars

RSE	0001293100
-----	------------

Stirring bar remover



# Magnetic Stirrers | Accessories



## Stirring bars

### IKAFLON® round

	Dimensions (L x Ø)	Ident. No.
IKAFLON® 10 Set (5 Pcs) round PTFE-coated	10 x 6 mm	0004488600
IKAFLON® 15 Set (5 Pcs) round PTFE-coated	15 x 6 mm	0004488700
IKAFLON® 20 Set (5 Pcs) round PTFE-coated	20 x 8 mm	0004488800
IKAFLON® 25 Set (5 Pcs) round PTFE-coated	25 x 8 mm	0004488900
IKAFLON® 30 Set (5 Pcs) round PTFE-coated	30 x 8 mm	0004489000
IKAFLON® 40 Set (5 Pcs) round PTFE-coated	40 x 8 mm	0004489100
IKAFLON® 50 Set (5 Pcs) round PTFE-coated	50 x 8 mm	0004489200
IKAFLON® 80 Set (5 Pcs) round PTFE-coated	80 x 10 mm	0004489300
IKAFLON® 110 round PTFE-coated*	110 x 27 mm	0000793300
IKAFLON® 155 round PTFE-coated*	155 x 27 mm	0001129000

\* Used for large magnetic stirrers like Midi MR 1 and Maxi MR 1 digital

### IKAFLON® glass round

	Dimensions (L x Ø)	Ident. No.
IKAFLON® glass 25 Set (5 Pcs) round	25 x 8 mm	0004492200
IKAFLON® glass 30 Set (5 Pcs) round	30 x 8 mm	0004492400
IKAFLON® glass 40 Set (5 Pcs) round	40 x 8 mm	0004492600
IKAFLON® glass 50 Set (5 Pcs) round	50 x 8 mm	0004492800

### IKAFLON® power SmSo

	Dimensions (L x Ø)	Ident. No.
IKAFLON® 15 Set (5 Pcs) power SmSo PTFE-coated	15 x 9 mm	0004493000
IKAFLON® 30 Set (5 Pcs) power SmSo PTFE-coated	30 x 12 mm	0004493200
IKAFLON® 50 Set (5 Pcs) power SmSo PTFE-coated	50 x 21 mm	0004493400

### IKAFLON® slide round

	Dimensions (L x Ø)	Ident. No.
IKAFLON® 25 Set (5 Pcs) slide round PTFE-coated	25 x 6 mm	0004493800
IKAFLON® 30 Set (5 Pcs) slide round PTFE-coated	30 x 6 mm	0004494000
IKAFLON® 40 Set (5 Pcs) slide round PTFE-coated	40 x 8 mm	0004494200
IKAFLON® 50 Set (5 Pcs) slide round PTFE-coated	50 x 8 mm	0004494400

### IKAFLON® ellipse

	Dimensions (L x Ø)	Ident. No.
IKAFLON® 20 Set (5 Pcs) ellipse PTFE-coated	20 x 10 mm	0004494600
IKAFLON® 25 Set (5 Pcs) ellipse PTFE-coated	25 x 12 mm	0004494800
IKAFLON® 30 Set (5 Pcs) ellipse PTFE-coated	30 x 15 mm	0004495000
IKAFLON® 35 Set (5 Pcs) ellipse PTFE-coated	35 x 15 mm	0004495200
IKAFLON® 40 Set (5 Pcs) ellipse PTFE-coated	40 x 20 mm	0004495400
IKAFLON® 50 Set (5 Pcs) ellipse PTFE-coated	50 x 20 mm	0004495600
IKAFLON® 60 Set (5 Pcs) ellipse PTFE-coated	60 x 20 mm	0004495800
IKAFLON® 70 Set (5 Pcs) ellipse PTFE-coated	70 x 20 mm	0004496000

### IKAFLON® cross

	Dimensions (L x Ø)	Ident. No.
IKAFLON® 10 Set (5 Pcs) cross PTFE-coated	10 x 10 mm	0004496200
IKAFLON® 20 Set (5 Pcs) cross PTFE-coated	20 x 20 mm	0004496400
IKAFLON® 25 Set (5 Pcs) cross PTFE-coated	25 x 25 mm	0004496600
IKAFLON® 30 Set (5 Pcs) cross PTFE-coated	30 x 30 mm	0004496800
IKAFLON® 38 Set (5 Pcs) cross PTFE-coated	38 x 38 mm	0004497000

### IKAFLON® bone

	Dimensions (L x Ø)	Ident. No.
IKAFLON® 37 Set (5 Pcs) bone PTFE-coated	37 x 8 x 20 mm	0004497200
IKAFLON® 54 Set (5 Pcs) bone PTFE-coated	54 x 8 x 20 mm	0004497400

### TRIKA®

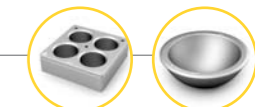
	Dimensions (L x Ø)	Ident. No.
TRIKA® 25 Set (5 Pcs) PTFE-coated	25 x 8 mm	0004499300
TRIKA® 40 Set (5 Pcs) PTFE-coated	40 x 8 mm	0004499400
TRIKA® 55 Set (5 Pcs) PTFE-coated	55 x 14 mm	0004499500
TRIKA® 80 Set (5 Pcs) PTFE-coated	80 x 18 mm	0004499600

### IKAFLON® beaker

	(Ø x Height in mm, for beaker)	Ident. No.
IKAFLON® 67 beaker PTFE-coated	67 x 21 mm with 50 x 8	0004497600
IKAFLON® 74 beaker PTFE-coated	74 x 29 mm with 60 x 9	0004497800
IKAFLON® 103 beaker PTFE-coated	103 x 32 mm with 80 x 10	0004498000
IKAFLON® 125 beaker PTFE-coated	125 x 48 mm with 106 x 25	0004498200

### IKAFLON® crown

	(Ø x Height in mm)	Ident. No.
IKAFLON® 9 Set (5 Pcs) crown PTFE-coated	9 x 6 mm	0004498400



## Synthesis blocks

### Dry heating block square series

	Hole Ø	Dimensions	Ident. No.
H 135.10 Square carrier with handle	–	160 x 160 mm	0004448200
H 135.101 Square carrier without handle	–	160 x 160 mm	0025000832
H 135.101 Block 16 x 4 ml	15.2 mm	79 x 79 mm	0025000626
H 135.102 Block 16 x 8 ml	17.5 mm	79 x 79 mm	0025000627
H 135.103 Block 9 x 16 ml	20.5 mm	79 x 79 mm	0025000628
H 135.104 Block 4 x 20 ml	28.5 mm	79 x 79 mm	0025000629
H 135.105 Block 4 x 30 ml	28.5 mm	79 x 79 mm	0025000630
H 135.106 Block 4 x 40 ml	28.5 mm	79 x 79 mm	0025000631
H 135.107 Block 100 ml	–	79 x 79 mm	0025000632
H 135.108 Block 250 ml	–	79 x 79 mm	0025000633



### 100 ml Flask heating block series

	Max. Outer Ø	Inner Ø	Ident. No.
H 135.20 Flask carrier 100 ml with handle	142 mm	–	0004448300
H 135.201 Flask carrier 100 ml without handle	142 mm	–	0025000634
H 135.201 Flask inlay 10 ml	–	33.8 mm	0025000636
H 135.202 Flask inlay 25 ml	–	43.8 mm	0025000637
H 135.203 Flask inlay 50 ml	–	52.8 mm	0025000638



### 500 ml Flask heating block series

	Max. Outer Ø	Inner Ø	Ident. No.
H 135.30 Flask carrier 500 ml with handle	142 mm	–	0004448400
H 135.301 Flask carrier 500 ml without handle	142 mm	–	0025000639
H 135.301 Flask inlay 100 ml	–	66.3 mm	0025000641
H 135.302 Flask inlay 250 ml	–	88 mm	0025000642



### 1000 ml Flask heating block series

	Max. Outer Ø	Inner Ø	Ident. No.
H 135.40 Flask carrier 1000 ml with handle	166.3 mm	–	0004448500
H 135.401 Flask carrier 1000 ml without handle	166.3 mm	–	0025000833
H 135.401 Flask inlay 500 ml	–	108 mm	0025000644



### 2000 ml Flask heating block series

	Max. Outer Ø	Inner Ø	Ident. No.
H 135.50 Flask carrier 2000 ml with handle	194.7 mm	–	0004448600
H 135.501 Flask carrier 2000 ml without handle	194.7 mm	–	0025000834
H 135.501 Flask inlay 1000 ml	–	131.8 mm	0025000645



### 3000 ml Flask heating block series

	Max. Outer Ø	Inner Ø	Ident. No.
H 135.60 Flask carrier 3000 ml with handle	218.3 mm	–	0004448700
H 135.601 Flask carrier 3000 ml without handle	218.3 mm	–	0025000835
H 135.601 Flask inlay 2000 ml	–	162 mm	0025000648



### 5000 ml Flask heating block series

	Max. Outer Ø	Inner Ø	Ident. No.
H 135.70 Flask carrier 5000 ml with handle	259.7 mm	–	0004448800
H 135.701 Flask carrier 5000 ml without handle	259.7 mm	–	0025000836
H 135.701 Flask inlay 3000 ml	–	194.5 mm	0025000651

AVAILABLE 2014





# Electronic Overhead Stirrers



Clockwise and counter clockwise rotation



Wireless Controller (WiCo)  
Removable wireless controller for easy and user-friendly operation

**EUROSTAR 100 control**



Laboratory stirrer designed for highly viscous applications and intensive mixing



Extremely powerful laboratory stirrer designed with high torque



## Technical data

Stirring quantity max. (H <sub>2</sub> O)	15 l   25 l
Max. viscosity	10,000 mPas   30,000 mPas
Motor rating input / output	70 / 42 W   118 / 84 W
Permissible ON time	100 %
Speed range	0/30 – 2000 rpm
Max. torque at stirring shaft	20 Ncm   40 Ncm
Display	LED
Temp. sensor connection	no
Chuck range	0.5 – 10 mm
Hollow shaft	yes
Dimensions (W x D x H)	86 x 208 x 248 mm
Weight	4.4 kg
Permissible ambient temp.	5 – 40 °C
Permissible relative moisture	80%
Protection class DIN EN 60529	IP 40

### EUROSTAR 20 digital | 40 digital

replaces RW 14; RW 16; EUROSTAR digital	
Stirring quantity max. (H <sub>2</sub> O)	15 l   25 l
Max. viscosity	10,000 mPas   30,000 mPas
Motor rating input / output	70 / 42 W   118 / 84 W
Permissible ON time	100 %
Speed range	0/30 – 2000 rpm
Max. torque at stirring shaft	20 Ncm   40 Ncm
Display	LED
Temp. sensor connection	no
Chuck range	0.5 – 10 mm
Hollow shaft	yes
Dimensions (W x D x H)	86 x 208 x 248 mm
Weight	4.4 kg
Permissible ambient temp.	5 – 40 °C
Permissible relative moisture	80%
Protection class DIN EN 60529	IP 40
Ident. No.	0004442000   0004444000

### EUROSTAR 60 digital | control

replaces EUROSTAR power basic; EUROSTAR power control-visc	
Stirring quantity max. (H <sub>2</sub> O)	40 l
Max. viscosity	50,000 mPas
Motor rating input / output	176 / 126 W
Permissible ON time	100 %
Speed range	0/30 – 2000 rpm
Max. torque at stirring shaft	60 Ncm
Display	LED   TFT
Temp. sensor connection	no   PT 1000
Chuck range	0.5 – 10 mm
Hollow shaft	yes
Dimensions (W x D x H)	86 x 208 x 248 mm   86 x 230 x 267 mm
Weight	4.4 kg   4.7 kg
Permissible ambient temp.	5 – 40 °C
Permissible relative moisture	80%
Protection class DIN EN 60529	IP 40
Ident. No.	0004446000   0004440000

### EUROSTAR 100 digital | control

replaces EUROSTAR control-visc P1	
Stirring quantity max. (H <sub>2</sub> O)	100 l
Max. viscosity	70,000 mPas
Motor rating input / output	186 / 136 W
Permissible ON time	100%
Speed range	0/30 – 1300 rpm
Max. torque at stirring shaft	100 Ncm
Display	LED   TFT
Temp. sensor connection	no   PT 1000
Chuck range	0.5 – 10 mm
Hollow shaft	yes
Dimensions (W x D x H)	86 x 208 x 248 mm   86 x 230 x 267 mm
Weight	4.4 kg   4.7 kg
Permissible ambient temp.	5 – 40 °C
Permissible relative moisture	80%
Protection class DIN EN 60529	IP 40
Ident. No.	0004238100   0004028500

## Technical data

Stirring quantity max. (H <sub>2</sub> O)	100 l
Max. viscosity	100,000 mPas
Motor rating input/output	130 / 84 W
Permissible ON time	100%
Speed range	0/6 – 2000 rpm
Max. torque at stirring shaft	200 Ncm
Display	LED   TFT
Temp. sensor connection	no   PT 1000
Chuck range	0.5 – 10 mm
Hollow shaft	yes
Dimensions (W x D x H)	91 x 209 x 274 mm   91 x 231 x 274 mm
Weight	4.6 kg   4.9 kg
Permissible ambient temp.	5 – 40 °C
Permissible relative moisture	80%
Protection class DIN EN 60529	IP 40

### EUROSTAR 200 digital | control

replaces EUROSTAR control-visc P4	
Stirring quantity max. (H <sub>2</sub> O)	100 l
Max. viscosity	100,000 mPas
Motor rating input/output	130 / 84 W
Permissible ON time	100%
Speed range	0/6 – 2000 rpm
Max. torque at stirring shaft	200 Ncm
Display	LED   TFT
Temp. sensor connection	no   PT 1000
Chuck range	0.5 – 10 mm
Hollow shaft	yes
Dimensions (W x D x H)	91 x 209 x 274 mm   91 x 231 x 274 mm
Weight	4.6 kg   4.9 kg
Permissible ambient temp.	5 – 40 °C
Permissible relative moisture	80%
Protection class DIN EN 60529	IP 40
Ident. No.	0003990000   0003992000

### EUROSTAR 200 control P4

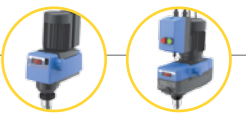
replaces EUROSTAR control-visc P7	
Stirring quantity max. (H <sub>2</sub> O)	100 l
Max. viscosity	150,000 mPas
Motor rating input/output	134 / 76 W
Permissible ON time	100%
Speed range	0/4 – 530 rpm
Max. torque at stirring shaft	660 Ncm
Display	TFT
Temp. sensor connection	PT 1000
Chuck range	0.5 – 10 mm
Hollow shaft	no
Dimensions (W x D x H)	91 x 230 x 379 mm
Weight	5.8 kg
Permissible ambient temp.	5 – 40 °C
Permissible relative moisture	80%
Protection class DIN EN 60529	IP 40
Ident. No.	0004090000

### EUROSTAR 20 high speed digital

replaces EUROSTAR power control-visc 6000	
Stirring quantity max. (H <sub>2</sub> O)	20 l
Max. viscosity	10,000 mPas
Motor rating input / output	176 / 125 W
Permissible ON time	100%
Speed range	0/150 – 6000 rpm
Max. torque at stirring shaft	20 Ncm
Display	LED
Temp. sensor connection	no
Chuck range	fixed
Hollow shaft	no
Dimensions (W x D x H)	86 x 208 x 325 mm
Weight	5.3 kg
Permissible ambient temp.	5 – 40 °C
Permissible relative moisture	80%
Protection class DIN EN 60529	IP 40
Ident. No.	0004028600

For accessories, see pages 28-31

# Mechanical Overhead Stirrers



Technical data	
Stirring quantity max. (H <sub>2</sub> O)	20 l
Max. viscosity	10,000 mPas
Motor rating input/output	70 / 35 W
Permissible ON time	100%
Speed range	60 – 2000 rpm (50 Hz)
Max. torque at stirring shaft	150 Ncm
Display	LED
Temp. sensor connection	no
Chuck range	0.5 – 10 mm
Hollow shaft	yes
Dimensions (W x D x H)	88 x 212 x 294 mm
Weight	3.1 kg
Permissible ambient temp.	5 – 40 °C
Permissible relative moisture	80%
Protection class DIN EN 60529	IP 20

RW 20 digital	
Ident. No.	0003593000

RW 28 digital



Special motor over-heating protection



Dual-speed range



Technical data	
Stirring quantity max. (H <sub>2</sub> O)	80 l
Max. viscosity	50,000 mPas
Motor rating input/output	220 / 90 W
Permissible ON time	100%
Speed range	60 – 1400 rpm (50 Hz)
Max. torque at stirring shaft	900 Ncm
Display	LED
Temp. sensor connection	no
Chuck range	1 – 10 mm
Hollow shaft	yes
Dimensions (W x D x H)	123 x 252 x 364 mm
Weight	7.5 kg
Permissible ambient temp.	5 – 40 °C
Permissible relative moisture	80%
Protection class DIN EN 60529	IP 40

RW 28 digital	
replaces RW 28 basic	
Stirring quantity max. (H <sub>2</sub> O)	80 l
Max. viscosity	50,000 mPas
Motor rating input/output	220 / 90 W
Permissible ON time	100%
Speed range	60 – 1400 rpm (50 Hz)
Max. torque at stirring shaft	900 Ncm
Display	LED
Temp. sensor connection	no
Chuck range	1 – 10 mm
Hollow shaft	yes
Dimensions (W x D x H)	123 x 252 x 364 mm
Weight	7.5 kg
Permissible ambient temp.	5 – 40 °C
Permissible relative moisture	80%
Protection class DIN EN 60529	IP 40
RW 28 digital Ident. No.	0005040000
RW 28 digital Package Ident. No.	0009023200

RW 47 digital	
replaces RW 47 D	
Stirring quantity max. (H <sub>2</sub> O)	200 l
Max. viscosity	100,000 mPas
Motor rating input/output	513 / 370 W
Permissible ON time	100%
Speed range	57 – 1300 rpm (50 Hz)
Max. torque at stirring shaft	3000 Ncm
Display	LED
Temp. sensor connection	no
Chuck range	3 – 16 mm
Hollow shaft	no
Dimensions (W x D x H)	145 x 358 x 465 mm
Weight	16 kg
Permissible ambient temp.	5 – 40 °C
Permissible relative moisture	80%
Protection class DIN EN 60529	IP 54
RW 47 digital Ident. No.	0004050000
RW 47 digital Package Ident. No.	0009023300

Package details on page 90  
For accessories, see pages 28-31



# Overhead Stirrers | Accessories

### Propeller stirrer, 4-bladed

Standard stirring element for drawing the material to be mixed from the top to the bottom. It creates local shearing forces and axial flow in the vessel. This propeller stirrer is used at medium to high speeds.



### Propeller stirrer, 3-bladed

Flow-efficient design for drawing the material to be mixed from the top and the bottom while creating minimum shearing forces. This propeller stirrer is used at medium to high speeds.



### Dissolver stirrer

This stirrer provides radial flow for drawing the material to be mixed from the top and the bottom while creating high turbulence and high shearing forces for particle reduction. Medium to high speeds required.



### Turbine stirrer

This stirrer is used for drawing the material to be mixed from above while generating axial flow within the vessel. It carries a minimum level of danger of injury when contact is made with vessel. It also creates minimum shearing forces and is used at medium to high speeds.



### Centrifugal stirrer

Two-bladed stirrer whose blades open with increasing speed. Perfect for stirring in round vessels with narrow necks and the effect is similar to that of a 4-bladed propeller stirrer. Medium to high speeds required.



### Paddle stirrer

This stirrer creates tangential flow, minimum turbulence, good heat exchange and gentle treatment of the product. Low to medium speeds required.



### Anchor stirrer

This stirrer creates tangential flow, high shearing rate at the edges, minimum deposits on the vessel wall making them great for polymer reactions and even distribution of high mineral contents in liquids. Ideal for medium to highly viscous fluids. Low speeds required.



	Ident. No.	Stirrer Ø	Shaft Ø	Shaft length	Max. speed	EUROSTAR 20 digital	EUROSTAR 40 digital
<b>Propeller stirrer, 4-bladed</b>							
R 1342	0000741000	50 mm	8 mm	350 mm	2000 rpm	•	•
R 1345	0000741300	100 mm	8 mm	540 mm	800 rpm		
R 2302	0000739000	150 mm	13 mm	800 mm	600 rpm		
<b>Propeller stirrer, 3-bladed</b>							
R 1381	0001296000	45 mm	8 mm	350 mm	2000 rpm	•	•
R 1382	0001295900	55 mm	8 mm	350 mm	2000 rpm	•	•
R 1385	0000477700	140 mm	10 mm	550 mm	800 rpm		
R 1388	0000477800	140 mm	10 mm	800 mm	400 rpm		
R 1389 (PTFE-coated)	0002343600	75 mm	8 mm	350 mm	800 rpm	•	•
R 1401	0001242900						
R 1405	0001289800						
<b>Dissolver stirrer</b>							
R 1300	0000513500	80 mm	8 mm	350 mm	2000 rpm		•
R 1302	0002387900	100 mm	10 mm	350 mm	1000 rpm		
R 1303	0002746700	42 mm	8 mm	350 mm	2000 rpm	•	•
R 1402	0001243300						
<b>Turbine stirrer</b>							
R 1311	0002332900	30 mm	8 mm	350 mm	2000 rpm	•	•
R 1312	0002333000	50 mm	8 mm	350 mm	2000 rpm	•	•
R 1313	0002333100	70 mm	10 mm	400 mm	800 rpm		
<b>Centrifugal stirrer</b>							
R 1352	0000756900	60 / 15 mm	8 mm	350 mm	2000 rpm	•	•
R 1355	0001132700	100 / 15 mm	8 mm	550 mm	800 rpm		
<b>Paddle stirrer</b>							
R 1375	0000757700	70 mm	8 mm	550 mm	800 rpm		
R 1376	0000757800	150 mm	10 mm	550 mm	800 rpm		
R 2311	0000739500	150 mm	13 mm	800 mm	600 rpm		
<b>Anchor stirrer</b>							
R 1330	0002022300	45 mm	8 mm	350 mm	1000 rpm	•	•
R 1331	0002022400	90 mm	8 mm	350 mm	1000 rpm		
R 1333	0002747400	150 mm	10 mm	550 mm	800 rpm		

EUROSTAR 60 digital	EUROSTAR 60 control	EUROSTAR 100 digital	EUROSTAR 100 control	EUROSTAR 200 digital	EUROSTAR 200 control	EUROSTAR 200 control P4	EUROSTAR 20 high speed digital	RW 20 digital	RW 28 digital	RW 47 digital
•	•	•	•	•	•	•		•		
•	•	•	•	•	•	•			•	•
										•
•	•	•	•	•	•	•		•		
•	•	•	•	•	•	•		•		
•	•	•	•	•	•	•		•		•
							•			
•	•	•	•	•	•	•		•		
•	•	•	•	•	•	•		•		•
•	•	•	•	•	•	•		•		
•	•	•	•	•	•	•		•		
•	•	•	•	•	•	•		•		
•	•	•	•	•	•	•		•		

• IKA® recommendations only



### EUROSTAR 20 high speed digital accessories

	Ident. No.
1 R 1401 Propeller, Ø 55 mm	0001242900
2 R 1405 Propeller, Ø 45 mm	0001289800
3 R 1402 Dissolver, Ø 42 mm	0001243300

### Temperature sensors for EUROSTAR control series

	Ident. No.
4 H 62.51 Temperature sensor, stainless steel, Ø 3 mm, 260 mm length	0002735451
5 H 66.51 Temperature sensor, stainless steel, glass-coated, Ø 6 mm, 260 mm length	0002735551
H 66.53 Temperature sensor, coated with SafeCoat, Ø 3 mm, 260 mm length	0004499900
6 H 70* Extension cable, 1 m	0002735600

\* For using the temperature sensors, H 70 cable is required

### RW 47 digital accessories

7 R 302 Stirring shaft protection, macrolon	0002953800
8 SI 400 Safety switch	0003294800
9 SI 472 Fixing device for R 472 stand	0003264000
10 SI 474 Fixing device for R 474 and T 653 stand	0003264400

### RW 20 digital & EUROSTAR series accessories

	Ident. No.
11 FK 1 Flexible coupling, clamping range 6-10 mm	0002336000
12 R 60 Keyless chuck for EUROSTAR 20 / 40 / 60 / 100 series	0003889500
13 R 301 Stirring shaft protection, plexiglass	0002603000
14 R 301.1 Support holder for R 301	0002604000





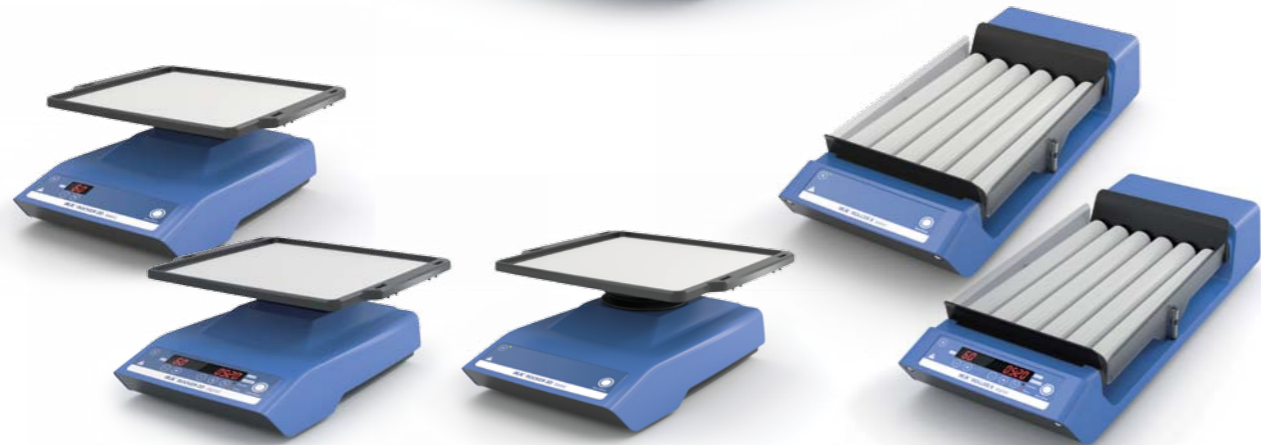
# Shakers

## Rocker 3D digital

**Timer Display**  
Timer display for accurate and reproducible conditions

**Three-dimensional tumbling rocking/see-saw motion**

**Touch keypad for easy operation**



### Technical data

Type of movement	rocking
Shaking diameter	8° (angle)   2.5 – 15° (angle)
Permissible shaking weight (incl. attachment)	2 kg
Motor rating input / output	16 / 9 W
Permissible ON time	100%
Speed range	5 – 80 rpm
Speed display	7 segment LED
Timer	no   ∞ / 1 s – 99.9 h
Timer display	none   7 segment LED
Dimensions (W x D x H)	280 x 330 x 150 mm
Weight	2.2 kg   2.2 kg Ident. No. 0004002000*   0004003000*

\* RD 1 Universal mat included in the delivery of all Rockers

### Rocker 3D basic | digital

Type of movement	tumbling
Shaking diameter	8° (angle)   0 – 15° (angle)
Permissible shaking weight	2 kg
Motor rating input / output	16 / 9 W
Permissible ON time	100%
Speed range	30 rpm (fixed)   5 – 80 rpm
Speed display	none   7 segment LED
Timer	no   ∞ / 1 s – 99.9 h
Timer display	none   7 segment LED
Dimensions (W x D x H)	280 x 330 x 165 mm 280 x 330 x 185 mm
Weight	2.2 kg Ident. No. 0004000000*   0004001000*

### Roller 6 basic | digital

Type of movement	rocking and rolling
Shaking diameter	24.5 mm (high)
Permissible shaking weight	2 kg
Motor rating input / output	16 / 9 W
Permissible ON time	100%
Speed range	30 rpm (fixed)   5 – 80 rpm
Speed display	none   7 segment LED
Timer	no   ∞ / 1 s – 99.9 h
Timer display	none   7 segment LED
Dimensions (W x D x H)	240 x 545 x 115 mm
Weight	4.5 kg Ident. No. 0004010000**   0004011000**

\*\* SH Shield included in the delivery of all Rollers

### Loopster digital

**Choice of tube holders to hold a number of different sized tubes**

**90 degree adjustable mixing angle**

**Touch keypad for easy operation**

**Rotating action**



Available 2014



Available 2014

Available 2014

### Technical data

Type of movement	rocking and rolling
Shaking diameter	24.5 mm (high)
Permissible shaking weight (incl. attachment)	2 kg
Motor rating input / output	16 / 9 W
Permissible ON time	100%
Speed range	30 rpm (fixed)   5 – 80 rpm
Speed display	none   7 segment LED
Timer	no   ∞ / 1 s – 99.9 h
Timer display	none   7 segment LED
Dimensions (W x D x H)	380 x 545 x 115 mm
Weight	7 kg Ident. No. 0004012000**   0004013000**

### Roller 10 basic | digital

Type of movement	rocking and rolling
Shaking diameter	24.5 mm (high)
Permissible shaking weight	2 kg
Motor rating input / output	16 / 9 W
Permissible ON time	100%
Speed range	30 rpm (fixed)   5 – 80 rpm
Speed display	none   7 segment LED
Timer	no   ∞ / 1 s – 99.9 h
Timer display	none   7 segment LED
Dimensions (W x D x H)	380 x 545 x 115 mm
Weight	7 kg Ident. No. 0004012000**   0004013000**

### Trayster basic | digital

Type of movement	rotating
Shaking diameter	–
Permissible shaking weight	2 kg
Motor rating input / output	16 / 9 W
Permissible ON time	100%
Speed range	20 rpm (fixed)   5 – 80 rpm
Speed display	none   7 segment LED
Timer	no   ∞ / 1 s – 99.9 h
Timer display	none   7 segment LED
Dimensions (W x D x H)	460 x 160 x 150 mm
Weight	1.7 kg Ident. No. 0004005000   0004006000

### Loopster basic | digital

Type of movement	rotating
Shaking diameter	–
Permissible shaking weight	2 kg
Motor rating input / output	16 / 9 W
Permissible ON time	100%
Speed range	20 rpm (fixed)   5 – 80 rpm
Speed display	none   7 segment LED
Timer	no   ∞ / 1 s – 99.9 h
Timer display	none   7 segment LED
Dimensions (W x D x H)	300 x 300 x 360 mm
Weight	3 kg Ident. No. 0004015000   0004016000

For accessories, see pages 38-39

# Shakers



Orbital action



Wide range of attachments



Continuous or touch operation

MS 3 digital



Orbital action



Wide speed range enables intensive mixing, even for small vessels



Different applications easily handled with interchangeable attachments and inserts

VORTEX Genius 3



## Technical data

Type of movement	orbital
Shaking diameter	4.5 mm
Permissible shaking weight (incl. attachment)	0.1 kg
Motor rating input / output	1.2 / 0.8 W
Speed range	1000 – 2800 rpm
Speed display	none
Timer display	none
Operating mode	touch operation
Dimensions (W x D x H)	95 x 110 x 70 mm
Weight	0.55 kg
Permissible ambient temp.	5 – 40 °C
Permissible relative moisture	80%

VORTEX 1
orbital
4.5 mm
0.1 kg
1.2 / 0.8 W
1000 – 2800 rpm
none
none
touch operation
95 x 110 x 70 mm
0.55 kg
5 – 40 °C
80%
Ident. No. 0004047700

lab dancer
orbital
4.5 mm
max. 50 ml (1 test tube)
1.2 / 0.8 W
2800 rpm (fixed)
none
none
touch operation
100 x 70 mm (Ø x H)
0.55 kg
5 – 40 °C
80%
Ident. No. 0003365000

MS 3 basic   digital
orbital
4.5 mm
0.5 kg
10 / 8 W
0 – 3000 rpm
scale   digital
none   digital
continuous / touch operation   timer and continuous / touch operation
148 x 205 x 63 mm
2.9 kg
5 – 40 °C
80%
Ident. No. 0003617000   0003319000

## Technical data

Type of movement	orbital
Shaking diameter	4 mm
Permissible shaking weight (incl. attachment)	0.4 kg
Motor rating input / output	58 / 10 W
Speed range	500 – 2500 rpm
Speed display	scale (0 – 6)
Timer display	none
Operating mode	continuous / touch operation
Dimensions (W x D x H)	127 x 149 x 136 mm
Weight	4.5 kg
Permissible ambient temp.	5 – 40 °C
Permissible relative moisture	80%

VORTEX Genius 3
orbital
4 mm
0.4 kg
58 / 10 W
500 – 2500 rpm
scale (0 – 6)
none
continuous / touch operation
127 x 149 x 136 mm
4.5 kg
5 – 40 °C
80%
Ident. No. 0003340000

VXR basic Vibrax®
orbital
4 mm
2 kg
35 / 13.2 W
0 – 2200 rpm
scale
none
continuous operation
157 x 247 x 130 mm
6.1 kg
5 – 40 °C
80%
Ident. No. 0002819000

HS 260 basic   control
reciprocating
20 mm
7.5 kg
45 / 10 W
20 – 300 rpm   10 – 300 rpm
LED line   digital
LED line   digital
timer and continuous operation
360 x 420 x 100 mm
8.5 kg   8.8 kg
5 – 50 °C
80%
HS 260 basic Ident. No. 0003066600 HS 260 control Ident. No. 0004278600

HS 501 digital
reciprocating
30 mm
15 kg
70 / 19 W
0 – 300 rpm
digital
digital
timer and continuous operation
505 x 585 x 120 mm
26 kg
5 – 50 °C
80%
Ident. No. 0002527000

For accessories, see pages 40-43



# Shakers



Digital display allows reading of speed, timer function and operating modes



All functions can be controlled and documented with labworldsoft®



Wide range of attachment combinations

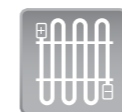


Orbital action

KS 260 control



KS 3000 ic control



Built-in cooling coil for connection to an external cooling unit (available only for KS 3000 ic control)



Orbital action



Assure highly accurate temperature control



Wide range of attachments allows using almost all shapes and sizes of vessels



## Technical data

Type of movement	orbital
Shaking diameter	3 mm
Motor rating input / output	35 / 13.2 W
Speed range	0 – 1100 rpm
Speed display	scale
Timer	∞ / 1 – 99 min
Dimensions (W x D x H)	185 x 320 x 105 mm
Weight	2.7 kg
Permissible ambient temp.	5 – 40 °C
Permissible relative moisture	80%

## MTS 2/4 digital Microtiter shaker

Type of movement	orbital
Shaking diameter	3 mm
Motor rating input / output	35 / 13.2 W
Speed range	0 – 1100 rpm
Speed display	scale
Timer	∞ / 1 – 99 min
Dimensions (W x D x H)	185 x 320 x 105 mm
Weight	2.7 kg
Permissible ambient temp.	5 – 40 °C
Permissible relative moisture	80%

Ident. No. 0003208000

## KS 130 basic KS 130 control

Type of movement	orbital
Shaking diameter	4 mm
Motor rating input / output	45 / 10 W
Speed range	80 – 800 rpm
Speed display	LED line   digital
Timer	∞ / 5 – 50 min   ∞ / 0 – 9 h 59 min
Dimensions (W x D x H)	270 x 316 x 98 mm
Weight	8.8 kg
Permissible ambient temp.	5 – 50 °C
Permissible relative moisture	80%

KS 130 basic Ident. No. 0002980000

KS 130 basic Package: Ident. No. 0009019000

KS 130 control Ident. No. 0004278200

KS 130 control Package: Ident. No. 0009025500

## KS 260 basic KS 260 control

Type of movement	orbital
Shaking diameter	10 mm
Motor rating input / output	45 / 10 W
Speed range	20 – 500 rpm   10 – 500 rpm
Speed display	LED line   digital
Timer	∞ / 5 – 50 min   ∞ / 0 – 9 h 59 min
Dimensions (W x D x H)	360 x 420 x 98 mm
Weight	8.5 kg   8.8 kg
Permissible ambient temp.	5 – 50 °C
Permissible relative moisture	80%

KS 260 basic Ident. No. 0002980200

KS 260 basic Package: Ident. No. 0009019200

KS 260 control Ident. No. 0004278400

KS 260 control Package: Ident. No. 0009025600

## Technical data

Type of movement	orbital
Shaking diameter	30 mm
Permissible shaking weight (incl. attachment)	15 kg
Motor rating input / output	70 / 19 W
Permissible ON time	100%
Speed range	0 – 300 rpm
Speed display	digital
Timer	∞ / 1 – 56 min
Timer display	digital
Operating mode	timer and continuous operation
Dimensions (W x D x H)	505 x 585 x 120 mm
Weight	26 kg
Permissible ambient temp.	5 – 50 °C
Permissible relative moisture	80%

## KS 501 digital

Type of movement	orbital
Shaking diameter	30 mm
Permissible shaking weight (incl. attachment)	15 kg
Motor rating input / output	70 / 19 W
Permissible ON time	100%
Speed range	0 – 300 rpm
Speed display	digital
Timer	∞ / 1 – 56 min
Timer display	digital
Operating mode	timer and continuous operation
Dimensions (W x D x H)	505 x 585 x 120 mm
Weight	26 kg
Permissible ambient temp.	5 – 50 °C
Permissible relative moisture	80%

Ident. No. 0002526400

## KS 3000 i control | ic control

Type of movement	orbital
Shaking diameter	20 mm
Permissible shaking weight (incl. attachment)	7.5 kg
Motor rating input / output	45 / 10 W
Permissible ON time	100%
Speed range	10 – 500 rpm
Speed display	LED
Timer	1 s – 999 h
Timer display	LED
Operating mode	timer and continuous operation
Dimensions (W x D x H)	465 x 430 x 695 mm
Weight	35 kg   37 kg
Permissible ambient temp.	15 – 32 °C
Permissible relative moisture	80%

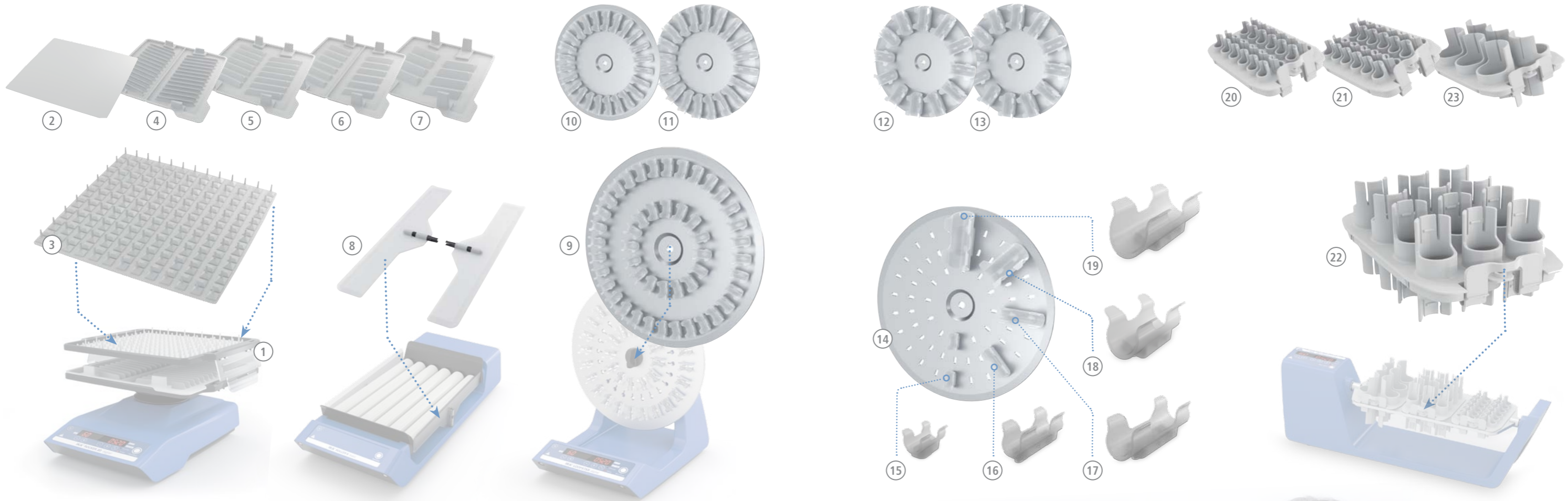
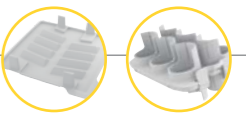
Ident. No. 0003940000 | 0003940100

## KS 4000 i control | ic control

Type of movement	orbital
Shaking diameter	20 mm
Permissible shaking weight (incl. attachment)	20 kg
Motor rating input / output	82 / 24 W
Permissible ON time	100%
Speed range	10 – 500 rpm
Speed display	LED
Timer	1 s – 999 h
Timer display	LED
Operating mode	timer and continuous operation
Dimensions (W x D x H)	580 x 525 x 750 mm
Weight	50 kg   55 kg
Permissible ambient temp.	15 – 32 °C
Permissible relative moisture	80%

Ident. No. 0003510000 | 0003510100

# Shakers | Accessories



## Rocker accessories

	Ident. No.
1 A 2	0004581700
Second level attachment	
2 RD 1*	0004532000
Universal mat	
3 RD 2	0004532100
Burled mat	
4 TB 1	0004532200
Tray, 28 x 5 ml, Ø 12 mm	
5 TB 2	0004532300
Tray, 16 x 15 ml, Ø 16 mm	
6 TB 3	0004532400
Tray, 14 x 30 ml, Ø 25 mm	
7 TB 4	0004532500
Tray, 10 x 50 ml, Ø 28 mm	

\* Included in the delivery

## Roller accessories

8 SH Shield*	0004013500
--------------	------------

## Loopster accessories

	Ident. No.
9 DS 1	0004524000
Tube attachment, 48 x 1.5 ml, Ø 10 mm	
10 DS 2	0004524100
Tube attachment, 24 x 5 ml, Ø 12 mm	
11 DS 3	0004524200
Tube attachment, 20 x 15 ml, Ø 16 mm	
12 DS 4	0004524300
Tube attachment, 12 x 30 ml, Ø 25 mm	
13 DS 5	0004524400
Tube attachment, 12 x 50 ml, Ø 28 mm	

14 DS 6	0004524500
Universal disc	
15 DS 6.1	0004524600
Spare clips, Ø 10 mm, 12 pcs.	
16 DS 6.2	0004524700
Spare clips, Ø 12 mm, 12 pcs.	
17 DS 6.3	0004524800
Spare clips, Ø 16 mm, 12 pcs.	
18 DS 6.4	0004524900
Spare clips, Ø 25 mm, 12 pcs.	
19 DS 6.5	0004525000
Spare clips, Ø 28 mm, 12 pcs.	

## Trayster accessories

	Ident. No.
20 TR 1	0004525100
Tube insert, 24 x 1.5 ml, Ø 10 mm	
21 TR 2	0004525200
Tube insert, 24 x 5 ml, Ø 12 mm	
22 TR 3	0004525300
Tube insert, 12 x 15 ml, Ø 16 mm	
23 TR 4	0004525400
Tube insert, 6 x 50 ml, Ø 28 mm	

AVAILABLE 2014





# Shakers | Accessories



## MS 3 basic / digital accessories

	Ident. No.
MS 3.1 Standard attachment	0003426300
MS 3.3 Universal attachment	0003426600
MS 1.21 One-hand insert	000L001540
MS 1.31 Test tube insert, 14 x Ø 10 mm	000L001840
MS 1.32 Test tube insert, 6 x Ø 12 mm	000L001850
MS 1.33 Test tube insert, 4 x Ø 16 mm	000L001860
MS 1.34 Test tube insert, without holes	000L001830
MS 3.4 Microtiter plate attachment	0003426400
MS 3.5 PCR plate attachment, 96-well	0003428000

## VORTEX Genius 3 accessories

	Ident. No.
23 VG 3.1 Standard attachment	0003341200
24 VG 3.2 One-hand attachment, 88 mm	0003342300
VG 3.21 Rubber pad, for VG 3.2 One-hand attachment	0004206500
25 VG 3.3 Universal attachment, 150 mm	0003342400
26 VG 3.31* Test tube attachment for 54 Eppendorf tubes	0003344300
27 VG 3.32* Test tube attachment, 18 x Ø 10 mm	0003343900
28 VG 3.33* Test tube attachment, 12 x Ø 12 mm	0003344000
29 VG 3.34* Test tube attachment, 8 x Ø 16 mm	0003344100
30 VG 3.35* Test tube attachment, 8 x Ø 20 mm	0003344200
31 VG 3.36* Erlenmeyer flask attachment, 100 – 250 ml	0003342100
32 VG 3.37* Microtiter plate attachment	0003344400

\* For VG 3.3 Universal attachment



## VXR basic accessories

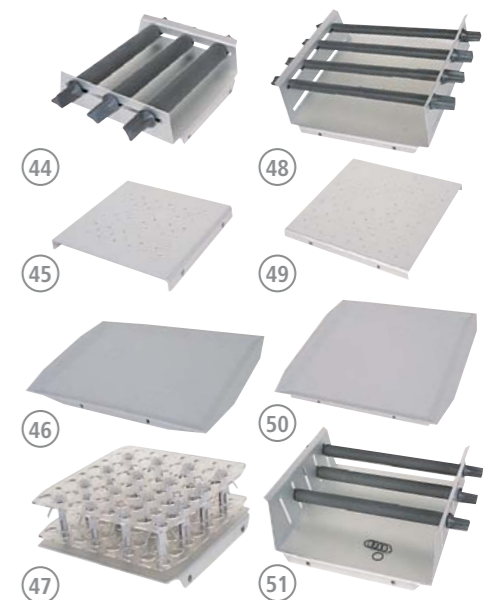
	Ident. No.		Ident. No.
33 VX 1 One-hand attachment, 1 – 250 ml	0000607200	37 VX 8 Universal attachment, 265 x 136 mm	0000910400
34 VX 2 Test tube attachment, 36 x Ø 16 mm	0000568900	38 VX 11 Basic holder	0003627700
35 VX 2E Eppendorf attachment, 64 x 1.5 ml	0001618100	39 VX 11.1 Test tube insert, 70 x Ø 10 mm	0003659000
36 VX 7 Dish attachment, 410 x 210 mm	0000953300	40 VX 11.2 Test tube insert, 41 x Ø 12 mm	0003659100
		41 VX 11.3 Test tube insert, 32 x Ø 16 mm	0003659200
		42 VX 11.4 Test tube insert, 18 x Ø 20 mm	0003659300
		43 VX 8.1 Clamping roll	0003375400

## KS 130 basic / control accessories

	Ident. No.
44 AS 130.1 Universal attachment, set-up plate 220 x 220 mm	0008017300
45 AS 130.2 Fixing clip attachment, set-up plate 230 x 230 mm	0003115000
46 AS 130.3 Dish attachment, set-up plate 220 x 340 mm	0003120000
47 AS 130.4 Test tube attachment, 64 x Ø 10-16 mm	0003120300

## KS / HS 260 basic / control and KS 3000 accessories

	Ident. No.
48 AS 260.1 Universal attachment, set-up plate 320 x 320 mm	0008017400
49 AS 260.2 Fixing clip attachment, set-up plate 330 x 330 mm	0003115500
50 AS 260.3 Dish attachment, set-up plate 320 x 320 mm	0003120600
51 AS 260.5 Separating funnel attachment	0003120900



# Shakers | Accessories

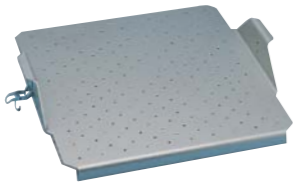


## KS / HS 501 digital accessories

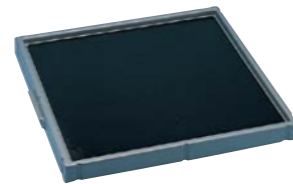
Ident. No.  
**AS 501.1** 0008000200  
 Universal attachment, set-up plate 420 x 420 mm



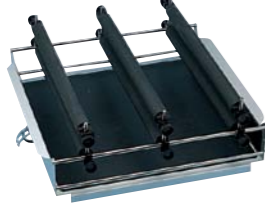
Ident. No.  
**AS 501.4** 0002341100  
 Fixing clip attachment, set-up plate 450 x 450 mm



Ident. No.  
**AS 501.5** 0002339600  
 Dish attachment, set-up plate 420 x 420 mm



Ident. No.  
**AS 501.2** 0008000300  
 Separating funnel attachment, 480 x 505 x 190 mm



Ident. No.  
**AS 501.3** 0008000400  
 Separating funnel attachment, 480 x 505 x 190 mm

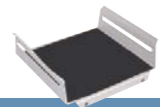


Ident. No.  
**AS 501.6** 0008000500  
 Separating funnel attachment, 480 x 505 x 225 mm

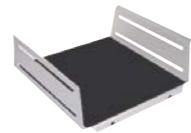


## Other accessories

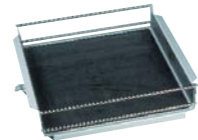
Ident. No.  
**AS 1.30** 0003148000  
 Basic holder for AS 130.1



Ident. No.  
**AS 1.60** 0003149000  
 Basic holder for AS 260.1



Ident. No.  
**AS 1.10** 0002339700  
 Basic holder for AS 501.1



Ident. No.  
**AS 1.31 | AS 1.61 | AS 1.11**  
 0003030500  
 0003030501  
 0002339800  
 Clamping roll for AS 130.1, AS 260.1, AS 501.1



Ident. No.  
**AS 1.6** 0001268400  
 Clamping device for AS 501.1



Ident. No.  
**AS 1.7** 0001269200  
 Clamping device for AS 501.1



Ident. No.  
**AS 1.8** 0001268900  
 Supporting clamping device for AS 501.1



Ident. No.  
**AS 1.12** 0002594500  
 Supporting bar for AS 1.10



Ident. No.  
**AS 1.13** 0002597000  
 Ground section holder for AS 1.10



Ident. No.  
**AS 2.1** 0001234300  
 Fixing clips, 25 ml



Ident. No.  
**AS 2.2** 0001234400  
 Fixing clips, 50 ml



Ident. No.  
**AS 2.3** 0001234500  
 Fixing clips, 100 ml



Ident. No.  
**AS 2.4** 0001234600  
 Fixing clips, 200 / 250 ml



Ident. No.  
**AS 2.5** 0001234700  
 Fixing clips, 500 ml



Ident. No.  
**AS 2.6** 0003819300  
 Fixing clips, 1000 ml



## KS 4000 accessories i / ic control accessories

Ident. No.  
**AS 4000.1** 0008022200  
 Universal attachment, set-up plate 380 x 410 mm



Ident. No.  
**AS 4000.2** 0003710100  
 Fixing clip attachment, set-up plate 430 x 430 mm



Ident. No.  
**AS 4000.3** 0003710000  
 Dish attachment, set-up plate 430 x 430 mm



Ident. No.  
**AS 1.400** 0003710200  
 Basic holder for AS 4000.1



Ident. No.  
**AS 1.401** 0003712000  
 Clamping roll for AS 4000.1



Ident. No.  
**AS 1.402** 0003712300  
 Fastening screw for AS 4000.1



**IKA+**  
**STICKMAX**  
 Universal adhesive mat,  
 200 x 200 mm

Ident. No. 0003920000





**Turbo function** for short time intensive mixing, homogenizing or grinding



**Built-in program library** for tests to be repeated under identical conditions



**Reverse rotation switch** to optimize mixing and crushing performance



reddot design award winner 2012



**Multilingual OLED display** for simple and precise menu navigation



**USB interface** to control and document all the parameters using labworldsoft® software and for updating your firmware



### Technical data

Motor rating input / output	20 / 17 W
Speed range / Turbo speed	400 – 6000 rpm / 8000 rpm
Display / Speed display	OLED / digital
Timer	10 s – 30 min (infinitely adjustable)
Reverse rotation interval	10 – 60 s
Dimensions (W x D x H)	122 x 178 x 48 mm
Weight	1.0 kg
Protection class DIN EN 60529	IP 20
Interface	yes
Voltage	100 – 240 V
Frequency	50/60 Hz
	Ident. No. 0004135300

### ULTRA-TURRAX® Tube Drive control

### Included with delivery

ULTRA-TURRAX® Tube Drive control	1
ST-20 Tube with stirring device	1
DT-20 Tube with rotor-stator element	1
BMT-20 G / S Tube for grinding with glass (G) or stainless steel balls (S)	2
Removal hook for removal of rotor-stator	1
Power supply	1
	Ident. No. 0003827500

### ULTRA-TURRAX® Tube Drive control Workstation



### ST Tube with stirring devices

	Ident. No.
ST-20 (pack of 25)	0003703000
ST-20-M-gamma (pack of 20)	0003700500
ST-50 (pack of 10)	0003699500
ST-50-M (pack of 10)	0003629500
ST-50-M-gamma (pack of 10)	0003701500

### DT Tube with rotor-stator element

	Ident. No.
DT-20 (pack of 25)	0003703100
DT-20-M-gamma (pack of 20)	0003700600
DT-50 (pack of 10)	0003699600
DT-50-M (pack of 10)	0003629600
DT-50-M-gamma (pack of 10)	0003701600

### BMT-S/G Tube for grinding with stainless steel (S) or glass (G) balls

	Ident. No.
BMT-20-S (pack of 25)	0003703200
BMT-20-G (pack of 25)	0003703300
BMT-20-S-M-gamma (pack of 20)	0003700700
BMT-50-S (pack of 10)	0003699700
BMT-50-G (pack of 10)	0003699800
BMT-50-S-M (pack of 10)	0003629700
BMT-50-G-M (pack of 10)	0003629800
BMT-50-S-M-gamma (pack of 10)	0003701700

### Cover for BMT tube

	Ident. No.
TC-50; for 50 ml tubes (10 pcs.)	0003749800
TC-20-M; with pierceable membrane for 20 ml tubes (25 pcs.)	0003749900
TC-50-M; with pierceable membrane for 50 ml tubes (10 pcs.)	0003750000

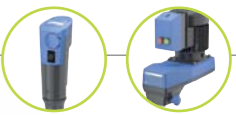
### Balls for BMT tube

	Ident. No.
Glass balls Ø 6 mm (250 g)	0003599200
Stainless steel balls Ø 5 mm (250 g)	0003599300

For accessories, see page 45



# T-series ULTRA-TURRAX® Dispersers



reddot design award  
winner 2012



PCR kit



reddot design award  
winner 2012



Dispersing tools are not included in delivery

## T 10 basic T 10 standard PCR kit

Technical data	
Motor rating input / output	125 / 75 W
Volume range (H <sub>2</sub> O)	0.5 – 100 ml
Viscosity max.	5000 mPas
Speed range	8000 – 30,000 rpm
Speed display	scale
Speed control	stepless
Noise without element	65 dB(A)
Extension arm diameter	8 mm
Extension arm length	130 mm
Process type	batch
Dimensions (W x D x H)	56 x 66 x 178 mm
Weight	0.5 kg
Perm. ambient temperature	5 – 40 °C
Permissible relative moisture	80 %
Protect. class DIN EN 60529	IP 30
Interface	no
Voltage	230 V
Frequency	50/60 Hz

T 10 basic Ident. No. 0003737000  
T 10 PCR kit Ident. No. 0004095500

## T 18 digital

Motor rating input / output	500 / 300 W
Volume range (H <sub>2</sub> O)	1 – 1500 ml
Viscosity max.	5000 mPas
Speed range	3000 – 25,000 rpm
Speed display	LED
Speed control	stepless
Noise without element	75 dB(A)
Extension arm diameter	13 mm
Extension arm length	160 mm
Process type	batch
Dimensions (W x D x H)	87 x 106 x 271 mm
Weight	2.5 kg
Perm. ambient temperature	5 – 40 °C
Permissible relative moisture	80 %
Protect. class DIN EN 60529	IP 20
Interface	no
Voltage	200 – 240 V
Frequency	50/60 Hz

T 18 digital Ident. No. 0003720000  
T 18 digital Package Ident. No. 0009022800

## T 25 digital

Motor rating input / output	800 / 500 W
Volume range (H <sub>2</sub> O)	1 – 2000 ml
Viscosity max.	5000 mPas
Speed range	3000 – 25,000 rpm
Speed display	LED
Speed control	stepless
Noise without element	75 dB(A)
Extension arm diameter	13 mm
Extension arm length	160 mm
Process type	batch
Dimensions (W x D x H)	87 x 106 x 271 mm
Weight	2.5 kg
Perm. ambient temperature	5 – 40 °C
Permissible relative moisture	80 %
Protect. class DIN EN 60529	IP 20
Interface	no
Voltage	200 – 240 V
Frequency	50/60 Hz

Ident. No. 0003725000

PCR kit and  
Package details on page 91

Dispersing tools are not included in delivery



## Technical data

Motor rating input / output	1100 / 700 W
Volume range (H <sub>2</sub> O)	0.25 – 30 l
Viscosity max.	5000 mPas
Speed range	600 – 10,000 rpm
Speed display	LED
Speed control	stepless
Noise without element	72 dB(A)
Extension arm diameter	16 mm
Extension arm length	220 mm
Process type	batch
Dimensions (W x D x H)	115 x 139 x 355 mm
Weight	5.76 kg
Perm. ambient temperature	5 – 40 °C
Permissible relative moisture	80 %
Protect. class DIN EN 60529	IP 20
Interface	no
Voltage	200 – 240 V
Frequency	50/60 Hz

## T 50 digital

Motor rating input / output	1100 / 700 W
Volume range (H <sub>2</sub> O)	0.25 – 30 l
Viscosity max.	5000 mPas
Speed range	600 – 10,000 rpm
Speed display	LED
Speed control	stepless
Noise without element	72 dB(A)
Extension arm diameter	16 mm
Extension arm length	220 mm
Process type	batch
Dimensions (W x D x H)	115 x 139 x 355 mm
Weight	5.76 kg
Perm. ambient temperature	5 – 40 °C
Permissible relative moisture	80 %
Protect. class DIN EN 60529	IP 20
Interface	no
Voltage	200 – 240 V
Frequency	50/60 Hz

Ident. No. 0003787000

## T 65 basic

Motor rating input / output	1800 / 1500 W
Volume range (H <sub>2</sub> O)	2 – 50 l
Viscosity max.	5000 mPas
Speed range	7200 rpm (fixed)
Speed display	–
Speed control	fixed
Noise without element	75 dB(A)
Extension arm diameter	flange
Extension arm length	flange
Process type	batch
Dimensions (W x D x H)	185 x 400 x 450 mm
Weight	26 kg
Perm. ambient temperature	5 – 40 °C
Permissible relative moisture	80 %
Protect. class DIN EN 60529	IP 54
Interface	no
Voltage	3 x 400 V
Frequency	50 Hz

T 65 basic Ident. No. 0004023500

T 65 basic Package  
Ident. No. 0009023400

## T 65 digital

Motor rating input / output	2600 / 2200 W
Volume range (H <sub>2</sub> O)	2 – 50 l
Viscosity max.	5000 mPas
Speed range	1000 – 9500 rpm
Speed display	LED
Speed control	stepless
Noise without element	75 dB(A)
Extension arm diameter	flange
Extension arm length	flange
Process type	batch
Dimensions (W x D x H)	300 x 400 x 390 mm
Weight	29 kg
Perm. ambient temperature	5 – 40 °C
Permissible relative moisture	80 %
Protect. class DIN EN 60529	IP 54
Interface	no
Voltage	3 x 400 V
Frequency	50/60 Hz

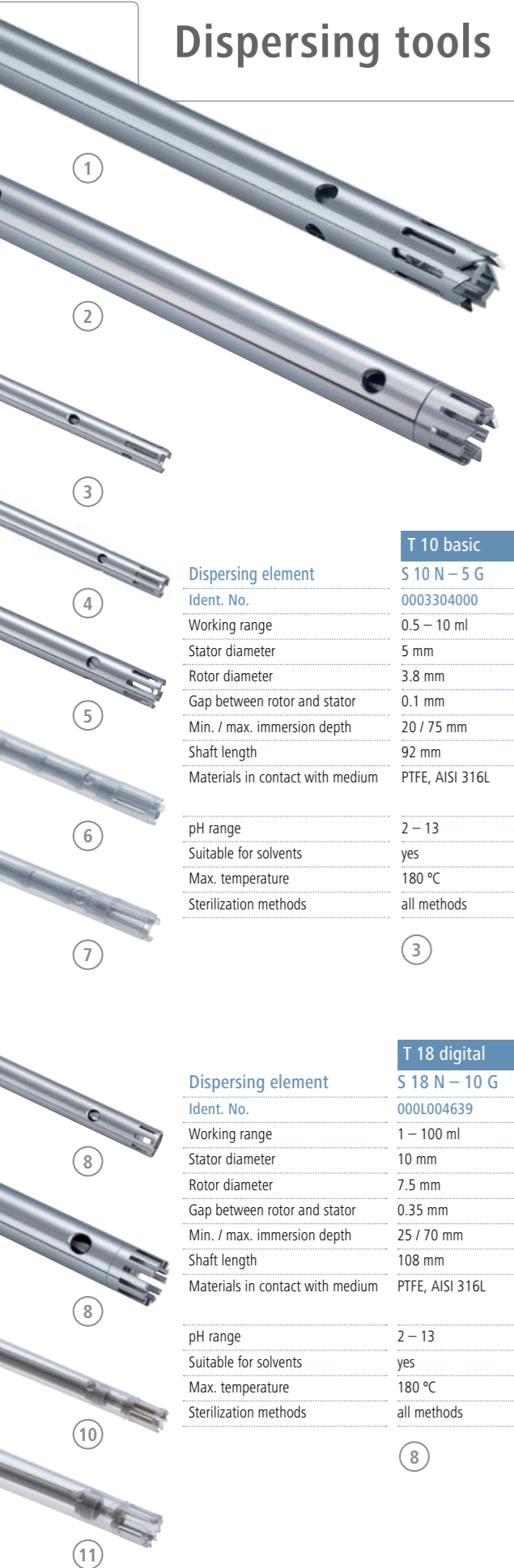
T 65 digital Ident. No. 0004234500

T 65 digital Package  
Ident. No. 0009023500

Package details on page 91  
For accessories, see pages 48-51



# Dispersing tools



Dispersing element	T 10 basic	
	S 10 N – 8 G – ST	S 10 N – 10 G – ST
Ident. No.	0004446500	0004446700
Working range	1 – 50 ml	1 – 100 ml
Stator diameter	8 mm	10 mm
Rotor diameter	6.1 mm	7.6 mm
Gap between rotor and stator	0.25 mm	0.2 mm
Min. / max. immersion depth	20 / 95 mm	20 / 100 mm
Shaft length	115 mm	115 mm
Materials in contact with medium	PTFE, AISI 316L	PTFE, AISI 316L



Dispersing element	T 10 basic				
	S 10 N – 5 G	S 10 N – 8 G	S 10 N – 10 G	S 10 D – 7 G – KS – 65	S 10 D – 7 G – KS – 110
Ident. No.	0003304000	0003305500	0003370100	0003433225 (25 pcs.)	0003433325 (25 pcs.)
Working range	0.5 – 10 ml	1 – 50 ml	1 – 100 ml	1 – 20 ml	1 – 40 ml
Stator diameter	5 mm	8 mm	10 mm	7 mm	7 mm
Rotor diameter	3.8 mm	6.1 mm	7.6 mm	4.8 mm	4.8 mm
Gap between rotor and stator	0.1 mm	0.25 mm	0.2 mm	0.3 mm	0.3 mm
Min. / max. immersion depth	20 / 75 mm	20 / 95 mm	20 / 100 mm	20 / 50 mm	20 / 90 mm
Shaft length	92 mm	115 mm	115 mm	65 mm	110 mm
Materials in contact with medium	PTFE, AISI 316L	PTFE, AISI 316L	PTFE, AISI 316L	Polycarbonate (PC) Polysulfon (PSU)	Polycarbonate (PC) Polysulfon (PSU)
pH range	2 – 13	2 – 13	2 – 13	–	–
Suitable for solvents	yes	yes	yes	–	–
Max. temperature	180 °C	180 °C	180 °C	100 °C	100 °C
Sterilization methods	all methods	all methods	all methods	yes, autoclavable	yes, autoclavable



Dispersing element	T 18 digital			
	S 18 N – 10 G	S 18 N – 19 G	S 18 D – 10 G – KS	S 18 D – 14 G – KS
Ident. No.	000L004639	000L004640	0003452400 (10 pcs.)	0003452300 (10 pcs.)
Working range	1 – 100 ml	10 – 1500 ml	10 – 100 ml	10 – 500 ml
Stator diameter	10 mm	19 mm	10 mm	14 mm
Rotor diameter	7.5 mm	12.7 mm	6.75 mm	9.5 mm
Gap between rotor and stator	0.35 mm	0.4 mm	0.25 mm	0.35 mm
Min. / max. immersion depth	25 / 70 mm	35 / 170 mm	15 / 85 mm	15 / 85 mm
Shaft length	108 mm	204 mm	150 mm	150 mm
Materials in contact with medium	PTFE, AISI 316L	PTFE, AISI 316L	Polycarbonate (PC) Polyetheretherketon (PEEK)	Polycarbonate (PC) Polyetheretherketon (PEEK)
pH range	2 – 13	2 – 13	–	–
Suitable for solvents	yes	yes	–	–
Max. temperature	180 °C	180 °C	100 °C	100 °C
Sterilization methods	all methods	all methods	yes, autoclavable	yes, autoclavable



**Disposable tube**  
S 18 / 25-ET50  
For attaching onto plastic tools from S 18 D and S 25 D series.

Ident. No.	0003452500
Material	PP



**IKA+**  
**Saw Tooth (ST) dispersing tools**

- > ST tools are recommended for use with tissue and other fibrous materials
- > Saw tooth design creates a cutting and tearing action for shredding fibrous materials
- > Made of high quality stainless steel

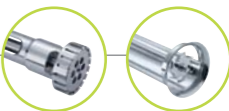
Dispersing element	T 25 digital			
	S 25 N – 8 G – ST	S 25 N – 10 G – ST	S 25 N – 18 G – ST	S 25 N – 25 G – ST
Ident. No.	0004446900	0004447100	0004447300	0004447500
Working range	1 – 50 ml	1 – 100 ml	10 – 1500 ml	50 – 2000 ml
Stator diameter	8 mm	10 mm	18 mm	25 mm
Rotor diameter	6.1 mm	7.5 mm	12.7 mm	17 mm
Gap between rotor and stator	0.25 mm	0.35 mm	0.3 mm	0.5 mm
Min. / max. immersion depth	27 / 85 mm	22 / 85 mm	40 / 165 mm	40 / 165 mm
Shaft length	108 mm	105 mm	194 mm	194 mm
Materials in contact with medium	PTFE, AISI 316L	PTFE, AISI 316L	PTFE, AISI 316L	PTFE, AISI 316L



Dispersing element	T 25 digital				
	S 25 N – 8 G	S 25 N – 10 G	S 25 N – 18 G	S 25 KV – 18 G	S 25 NK – 19 G
Ident. No.	0001024200	0000594000	0000593400	0002348000	0002494700
Working range	1 – 50 ml	1 – 100 ml	10 – 1500 ml	10 – 1500 ml	25 – 1500 ml
Stator diameter	8 mm	10 mm	18 mm	18 mm	19 mm
Rotor diameter	6.1 mm	7.5 mm	12.7 mm	12.7 mm	12.7 mm
Gap between rotor and stator	0.25 mm	0.35 mm	0.3 mm	0.3 mm	0.3 mm
Min. / max. immersion depth	27 / 85 mm	22 / 85 mm	40 / 165 mm	40 / 225 mm	40 / 165 mm
Shaft length	108 mm	105 mm	194 mm	270 mm	194 mm
Materials in contact with medium	PTFE, AISI 316L	PTFE, AISI 316L	PTFE, AISI 316L	FFPM / SIC, AISI 316L	PTFE, AISI 316L
pH range	2 – 13	2 – 13	2 – 13	2 – 13	2 – 13
Suitable for solvents	yes	yes	yes	yes	yes
Max. temperature	180 °C	180 °C	180 °C	220 °C	120 °C
Sterilization methods	all methods	all methods	all methods	wet chemical	wet chemical
Min. vacuum	–	–	–	1 mbar	–
Max. pressure	–	–	–	6 bar	–



# Dispersing tools



## T 25 digital

Dispersing element	S 25 N – 25 G	S 25 KV – 25 G	S 25 N – 25 F	S 25 KV – 25 F	S 25 D – 10 G – KS	S 25 D – 14 G – KS
Ident. No.	0001713300	0002466900	0001713800	0002404000	0003452200 (10 pcs.)	0003452100 (10 pcs.)
Working range	50 – 2000 ml	50 – 2000 ml	100 – 2000 ml	100 – 2000 ml	10 – 100 ml	10 – 500 ml
Stator diameter	25 mm	25 mm	25 mm	25 mm	10 mm	14 mm
Rotor diameter	17 mm	17 mm	18 mm	18 mm	6.75 mm	9.5 mm
Gap between rotor and stator	0.5 mm	0.5 mm	0.5 mm	0.5 mm	0.25 mm	0.35 mm
Min. / max. immersion depth	40 / 165 mm	40 / 225 mm	40 / 165 mm	40 / 225 mm	15 / 85 mm	15 / 85 mm
Shaft length	194 mm	270 mm	194 mm	270 mm	150 mm	150 mm
Materials in contact with medium	PTFE, AISI 316L	FFPM / SIC, AISI 316L	PTFE, AISI 316L	FFPM / SIC, AISI 316L	Polycarbonate (PC) Polyetheretherketon (PEEK)	Polycarbonate (PC) Polyetheretherketon (PEEK)
pH range	2 – 13	2 – 13	2 – 13	2 – 13	–	–
Suitable for solvents	yes	yes	yes	yes	–	–
Max. temperature	180 °C	220 °C	180 °C	180 °C	100 °C	100 °C
Sterilization methods	all methods	wet chemical	all methods	all methods	yes, autoclavable	yes, autoclavable
Min. vacuum	–	1 mbar	–	–	–	–
Max. pressure	–	6 bar	–	–	–	–

19

20

21

22

## T 50 digital

Dispersing element	S 50 N – G 45 G	S 50 N – G 45 M	S 50 N – G 45 F	S 50 N – G 45 G – ST
Ident. No.	0008003000	0008003300	0008003900	00080039500
Working range	0.5 – 20 l	0.5 – 15 l	0.25 – 10 l	0.5 – 20 l
Stator diameter	45 mm	45 mm	45 mm	45 mm
Rotor diameter	36 mm	40.5 mm	40 mm	36 mm
Gap between rotor and stator	0.5 mm	0.25 mm	0.5 mm	0.5 mm
Min. / max. immersion depth	70 / 250 mm	70 / 250 mm	70 / 250 mm	70 / 250 mm
Shaft length	300 mm	290 mm	290 mm	300 mm
Materials in contact with medium	PTFE, AISI 316L	PTFE, AISI 316L	PTFE, AISI 316L	PTFE, AISI 316L
pH range	2 – 13	2 – 13	2 – 13	–
Suitable for solvents	yes	yes	yes	–
Max. temperature	180 °C	180 °C	180 °C	–
Sterilization methods	all methods	all methods	all methods	–

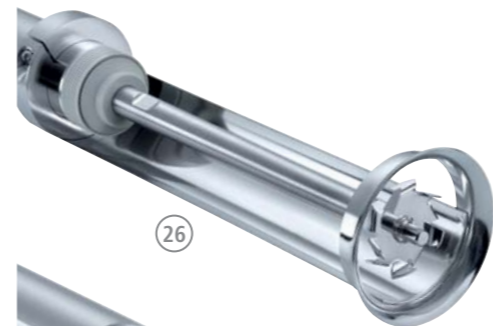
23

24

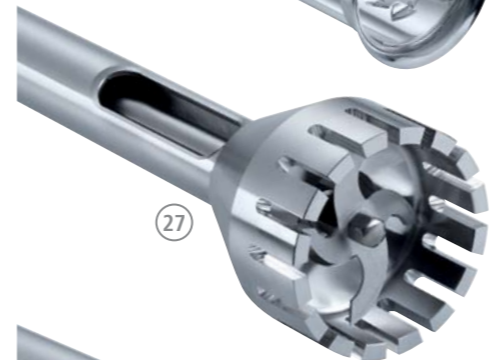
25

## T 50 digital

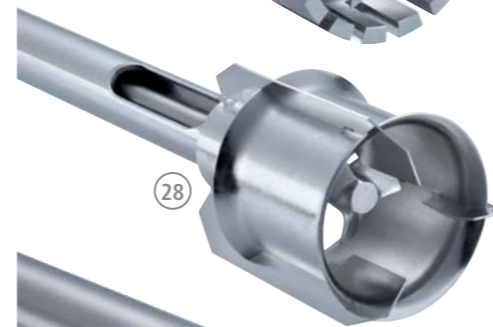
Dispersing element	S 50 KG – HH – G 45 G	S 50 KG – HH – G 45 M	S 50 KG – HH – G 45 F
Ident. No.	0008003200	0008003500	0008004100
Working range	0.5 – 20 l	0.5 – 15 l	0.25 – 10 l
Stator diameter	45 mm	45 mm	45 mm
Rotor diameter	36 mm	40.5 mm	40 mm
Gap between rotor and stator	0.5 mm	0.25 mm	0.5 mm
Min. / max. immersion depth	70 / 260 mm	70 / 250 mm	70 / 250 mm
Shaft length	300 mm	300 mm	290 mm
Materials in contact with medium	FFPM / SIC, AISI 316L	FFPM / SIC, AISI 316L	FFPM / SIC, AISI 316L
pH range	2 – 13	2 – 13	2 – 13
Suitable for solvents	yes	yes	yes
Max. temperature	180 °C	180 °C	180 °C
Sterilization methods	wet chemical	wet chemical	wet chemical



26



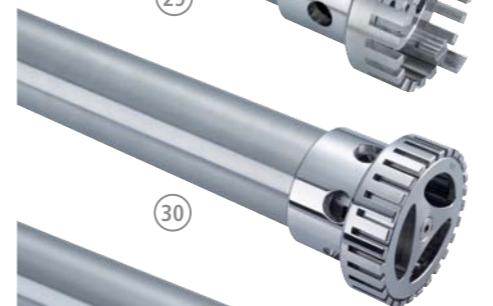
27



28



29



30



31

## T 50 digital

Dispersing element	R 50 "high speed" stirring shaft	S 50 N – W 65 SK Cutting head	S 50 N – W 80 SMK Jet mixer head
Ident. No.	0001689300*	0008005100	0008006300
Working range	0.25 – 30 l	1 – 10 l	1 – 50 l
Max. circumferential speed	15.7 – 23 m/s	–	–
Max. permissible rotor diameter	50 mm	–	–
Material	Stainless steel (AISI 316L)	–	–
Generator diameter	–	65 mm	80 mm
Min. / max. immersion depth	–	80 / 350 mm	140 / 350 mm
Available seals	–	S 50 N	S 50 N

26

27

28

\* Included with delivery:  
R 1402 Dissolver  
Ident. No. 0001243300

## T 65 basic I digital

Dispersing element	S 65 KG – HH – G 65 G	S 65 KG – HH – G 65 M	S 65 KG – HH – G 65 F
Ident. No.	0008005500	0008005700	0008005900
Working range	2 – 50 l	2 – 40 l	2 – 30 l
Stator diameter	65 mm	65 mm	65 mm
Rotor diameter	58 mm	58 mm	58 mm
Gap between rotor and stator	0.5 mm	0.5 mm	0.5 mm
Min. / max. immersion depth	90 / 450 mm	80 / 450 mm	80 / 450 mm
Shaft length	520 mm	510 mm	500 mm
Materials in contact with medium	FFPM / SIC, AISI 316L	FFPM / SIC, AISI 316L	FFPM / SIC, AISI 316L
pH range	2 – 13	2 – 13	2 – 13
Suitable for solvents	yes	yes	yes
Max. temperature	180 °C	180 °C	180 °C
Sterilization methods	wet chemical	wet chemical	wet chemical
Min. vacuum	1 mbar	1 mbar	1 mbar
Max. pressure	6 bar	6 bar	6 bar

29

30

31

For dispersing instrument	Dispersing element Shaft / Agitator shaft	With seal or bearing type*	Generator or element**	With outer diameter (mm)	Degree of fineness achieved***
T 10 basic	S 10	N	–	5 / 8 / 10	G
T 18 digital	S 18	N	–	10 / 19	G
T 25 digital	S 25	N / KV / NK	–	8 / 10 / 18 / 19 / 25	G / F
T 50 digital	S / R 50	N	G / W	45 / 65 / 80	G / M / F
T 65 basic	S 65	KG – HH	G	65	G / M / F
T 65 digital	S 65	KG – HH	G	65	G / M / F

\*N = PTFE bearing

KV = Ball bearing with vacuum-tight sliding-ring seal with silicon carbide seal rings

NK = PTFE bearing with additional ball bearing without seal

KG – HH = Ball bearing with sliding-ring seals of hard metal allow with FFPM seals rings

\*\*G = Proved configuration

W = Special element

\*\*\*G = Coarse

M = Medium

F = Fine



# Mills



Dust-proof sealed housing, high level of user safety



USB interface to control and document all the parameters



Adjustable safety speed and time



Quiet operation



Tube Mill control

**World's first**



reddot design award winner 2013



Cross-contamination free  
No cleaning required  
Precise milling results  
Large application range

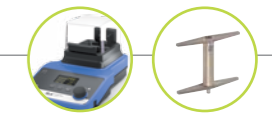
Technical data	
Motor rating input / output	100 / 80 W
Speed range	5000 – 25,000 rpm
Useful volume	40 ml
Duty cycle (ON / OFF)	5 s – 3 min (timer)
Circumferential speed	65 m/s
Max. feed hardness	5 Mohs
Max. feed grain size	10 mm
Grinding chamber material	Transparent plastic (PP)
Dimensions (W x D x H)	180 x 300 x 170 mm
Weight	2.7 kg
Permissible ambient temperature	5 – 40 °C
Permissible relative moisture	80%
Protection class acc. to DIN EN 60529	IP 30

Tube Mill control	
Ident. No.	0004180000*

\* Two single grinding chambers are included in the delivery

- MT 40 Disposable grinding chamber (10 pieces/pack)**  
Ident. No. 0004425000
- MT 40 Disposable grinding chamber (100 pieces/pack)**  
Ident. No. 0020001173
- MTC 40 (100 pieces/pack)**  
Cover for MT 40  
Ident. No. 0020001182

# Mills | Accessories



**IKA+**  
A 11 basic can be used for embrittlement of grinding materials with liquid nitrogen in the grinding chamber.



Technical data	
Motor rating input / output	160 / 100 W
Speed range	28,000 rpm (fixed)
Useful volume	80 ml (optional 250 ml)
Duty cycle (ON / OFF)	1 / 10 min
Circumferential speed	53 m/s
Max. feed hardness	9 Mohs
Max. feed grain size	10 mm
Grinding chamber material	stainless steel (AISI 316L)
Dimensions (W x D x H)	85 x 85 x 240 mm
Weight	1.5 kg
Permissible ambient temperature	5 – 40 °C
Permissible relative moisture	80%
Protection class acc. to DIN EN 60529	IP 43

A 11 basic	
Ident. No.	0002900000

A 11 basic accessories	
	Ident. No.
A 11.1	0002904600
Spare beater, stainless steel	
A 11.2	0002905200
Cutting blade, stainless steel	
A 11.3	0002983000
Beater, stainless steel, coated with chromium carbide	
A 11.4	0002904100
Grinding chamber, polycarbonate, 250 ml	
A 11.5	0002983100
Spare grinding chamber, Tefcel, 80 ml	
A 11.6	0003302900
Double beater, titanium	
AS 11.7	0003048700
Funnel, jacket PTFE, sieve stainless steel	



# Universal mill | Microfine grinder

MF 10 basic



Powerful drive

Powerful



Easy to clean working surface made of stainless steel



Easily interchangeable heads



MF 10.1 Cutting-grinding head  
MF 10.2 Impact-grinding head

### Technical data

Motor rating input/output	620 / 260 W
Speed range	20,000 rpm (fixed)
Speed display	no
Useful volume	250 ml
Duty cycle (ON / OFF)	7 / 10 min
Overload protection	yes
Circumferential speed	72 m/s
Max. feed hardness	9 Mohs
Max. feed grain size	7 mm
Grinding chamber material	stainless steel (AISI 316L)
Dimensions (W x D x H)	170 x 170 x 350 mm
Weight	6.6 kg
Permissible ambient temperature	5 – 40 °C
Permissible relative moisture	80%
Protection class acc. to DIN EN 60529	IP 21

### M 20 Universal mill

Motor rating input/output	620 / 260 W
Speed range	20,000 rpm (fixed)
Speed display	no
Useful volume	250 ml
Duty cycle (ON / OFF)	7 / 10 min
Overload protection	yes
Circumferential speed	72 m/s
Max. feed hardness	9 Mohs
Max. feed grain size	7 mm
Grinding chamber material	stainless steel (AISI 316L)
Dimensions (W x D x H)	170 x 170 x 350 mm
Weight	6.6 kg
Permissible ambient temperature	5 – 40 °C
Permissible relative moisture	80%
Protection class acc. to DIN EN 60529	IP 21

Ident. No. 0001603600

### MF 10 basic

Motor rating input/output	1000 / 500 W
Speed range	3000 – 6500 rpm
Speed display	no
Useful volume	max. 5 kg/h
Duty cycle (ON / OFF)	120 / 30 min
Overload protection	yes
Circumferential speed	22.5 m/s
Max. feed hardness	3 Mohs
Max. feed grain size	15 mm
Grinding chamber material	stainless steel (AISI 304)
Dimensions (W x D x H)	320 x 300 x 560 mm
Weight	11.9 kg (incl. MF 10 basic)
Permissible ambient temperature	5 – 40 °C
Permissible relative moisture	80%
Protection class acc. to DIN EN 60529	IP 22

Ident. No. 0002836000

### Technical data

Circumferential speed	22.5 m/s / 31.4 m/s
Max. granularity of task	max. 15 mm / max. 10 mm
Dimensions including MF 10 basic	320 x 300 x 560 mm 320 x 300 x 450 mm
Weight including MF 10 basic	11.9 kg / 12.4 kg
Materials in contact with medium	stainless steel

# Mills | Accessories



### M 20 accessories

	Ident. No.
M 21	0000328200
Spare cutter, stainless steel	
M 22	0000521800
Hard metal cutter, tungsten carbide	
M 23	0001443400
Star-shaped cutter, stainless steel	
M 20.1	0008006200
Grinding chamber, 250 ml	

### MF 10 basic accessories

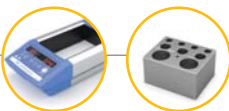
	Ident. No.
MF 0.25	0002938900
Sieve, Ø 0.25 mm	
MF 0.5	0002939000
Sieve, Ø 0.5 mm	
MF 1.0	0002939200
Sieve, Ø 1 mm	
MF 2.0	0002939400
Sieve, Ø 2 mm	
MF 3.0	0002939500
Sieve, Ø 3 mm	
MF 4.0	0002939600
Sieve, Ø 4 mm	





# Dry Block Heaters

# Dry Block Heaters | Accessories



Dry Block Heater 3

**°C** Temperature display for the actual/set-point temperatures, up/down arrows for set-point control

A wide range of interchangeable heating blocks to fit any sample tube or plate

External probe for accurate temperature control

**Timer Display** Timer display for accurate and reproducible conditions, up/down arrows for set-point control



### Technical data

Number of blocks	1
Heat output	165 W
Heating temperature range	RT +5 °C to 120 °C
Display	LED
Heat control accuracy	± 1 K
Connection for external temperature sensor	DIN 12878
Control accuracy with sensor	± 1 K
Material of the blocks	aluminum alloy
Timer	1 min to 99h 59min
Dimensions (W x D x H)	151 x 228 x 73 mm

\* PT 1000.60 Temperature sensor included in the delivery of all the Dry Block Heaters

### Dry Block Heater 1

Number of blocks	1
Heat output	165 W
Heating temperature range	RT +5 °C to 120 °C
Display	LED
Heat control accuracy	± 1 K
Connection for external temperature sensor	DIN 12878
Control accuracy with sensor	± 1 K
Material of the blocks	aluminum alloy
Timer	1 min to 99h 59min
Dimensions (W x D x H)	151 x 228 x 73 mm
Ident. No.	0004025100*

### Dry Block Heater 2

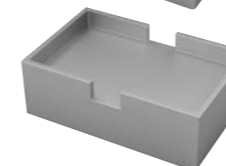
Number of blocks	2
Heat output	250 W
Heating temperature range	RT +5 °C to 120 °C
Display	LED
Heat control accuracy	± 1 K
Connection for external temperature sensor	DIN 12878
Control accuracy with sensor	± 1 K
Material of the blocks	aluminum alloy
Timer	1 min to 99h 59min
Dimensions (W x D x H)	151 x 304 x 73 mm
Ident. No.	0004025200*

### Dry Block Heater 3

Number of blocks	3
Heat output	330 W
Heating temperature range	RT +5 °C to 120 °C
Display	LED
Heat control accuracy	± 1 K
Connection for external temperature sensor	DIN 12878
Control accuracy with sensor	± 1 K
Material of the blocks	aluminum alloy
Timer	1 min to 99h 59min
Dimensions (W x D x H)	151 x 380 x 73 mm
Ident. No.	0004025300*

### Dry Block Heater 4

Number of blocks	4
Heat output	412 W
Heating temperature range	RT +5 °C to 120 °C
Display	LED
Heat control accuracy	± 1 K
Connection for external temperature sensor	DIN 12878
Control accuracy with sensor	± 1 K
Material of the blocks	aluminum alloy
Timer	1 min to 99h 59min
Dimensions (W x D x H)	151 x 456 x 73 mm
Ident. No.	0004025400*



	No. of holes	Hole depth (mm)	W x D x H (mm)	Ident. No.
<b>Micro centrifuge tubes</b> ∨				
DB 1.1 Single block, PCR tubes, Ø 7.9 mm	30	27.6	95 x 76 x 51	0004467600
DB 1.2 Single block, Eppendorf tubes, Ø 11.5 mm	20	36.9	95 x 76 x 51	0004467700
DB 1.3 Single block, Microtubes, Ø 11.1 mm	20	39.1	95 x 76 x 51	0004467800
DB 1.4 Single block, VWR / Eppendorf tubes, Ø 11.5 mm	20	38.1	95 x 76 x 51	0004467900
DB 1.5 Single block, Corning tubes, Ø 10.9 mm	20	38.1	95 x 76 x 51	0004468000
<b>Conical bottom centrifuge tubes</b> ∪				
DB 2.1 Single block, Conical tubes, Ø 17.1 mm	12	44.5	95 x 76 x 51	0004468100
DB 2.2 Single block, Conical tubes, Ø 29 mm	5	47.6	95 x 76 x 51	0004468200
<b>Combination blocks</b> ∪∪				
DB 3.1 Single block, test tube combination, 6/12/13/25 ml	6 / 5 / 3	48.4 / 48.4 / 48.4	95 x 76 x 51	0004468300
DB 3.2 Single block, centrifuge combination, 1.5/15/50 ml	4 / 3 / 2	39.1 / 44.5 / 47.6	95 x 76 x 51	0004468400
DB 3.3 Single block, microtube combination, 0.5/1.5/2 ml	6 / 10 / 5	27.6 / 39.1 / 38.1	95 x 76 x 51	0004468500
<b>Standard test tubes</b> ∪				
DB 4.1 Single block, Round tubes, Ø 8.3 mm	30	48.4	95 x 76 x 51	0004468600
DB 4.2 Single block, Round tubes, Ø 10.7 mm	24	48.4	95 x 76 x 51	0004468700
DB 4.3 Single block, 16 Round tubes, Ø 13.9 mm	16	48.4	95 x 76 x 51	0004468800
DB 4.4 Single block, 20 Round tubes, Ø 13.9 mm	20	48.4	95 x 76 x 51	0004468900
DB 4.5 Single block, Round tubes, Ø 17.5 mm	12	48.4	95 x 76 x 51	0004469000
DB 4.6 Single block, Round tubes, Ø 21 mm	8	48.4	95 x 76 x 51	0004469100
DB 4.7 Single block, Round tubes, Ø 26.2 mm	6	48.4	95 x 76 x 51	0004469200
DB 4.8 Single block, Round tubes, Ø 35 mm	4	47.6	95 x 76 x 51	0004469300
DB 4.9 Single block, Round tubes, Ø 19.1 mm	12	48.4	95 x 76 x 51	0004469400
<b>Vials</b> ∪				
DB 5.1 Single block, 12 mm vials, Ø 12.7 mm	20	30.0	95 x 76 x 51	0004469500
DB 5.2 Single block, 15 mm vials, Ø 15.8 mm	20	35.0	95 x 76 x 51	0004469600
DB 5.3 Single block, 17 mm vials, Ø 17.8 mm	12	45.0	95 x 76 x 51	0004469700
DB 5.4 Single block, 19 mm vials, Ø 19.7 mm	12	45.0	95 x 76 x 51	0004469800
DB 5.5 Single block, 21 mm vials, Ø 21.7 mm	9	45.0	95 x 76 x 51	0004469900
DB 5.6 Single block, 23 mm vials, Ø 23.8 mm	8	45.0	95 x 76 x 51	0004470000
DB 5.7 Single block, 25 mm vials, Ø 25.8 mm	8	45.0	95 x 76 x 51	0004470100
DB 5.8 Single block, 28 mm vials, Ø 28.8 mm	6	45.0	95 x 76 x 51	0004470200
DB 5.9 Single block, 16 mm vials, Ø 16.4 mm	15	45.0	95 x 76 x 51	0004470300
<b>PCR - plates, tubes, strips</b> ∨				
DB 6.1 Single block, 10 x 8 PCR tube strips, Ø 6.4 mm	80	15.5	95 x 76 x 51	0004470400
DB 6.2 Single block, 64 PCR tubes, Ø 6.4 mm	64	20.2	95 x 76 x 51	0004470500
DB 6.3 Double block, 1 x 96-well PCR plate, Ø 6.4 mm	96	15.5	95 x 76 x 51	0004470600
<b>Cuvettes</b> ∪				
DB 8.1 Single block, 2 x 6 cuvettes, Ø 12.5 mm		25.4	95 x 76 x 51	0004470700
<b>Microtitre plates</b>				
DB 7.1 Double block, 96- or 384-Well-Platte		13.5	95 x 152 x 57	0004470800

Temperature sensors	Ident. No.
PT 1000.60	Temperature sensor, stainless steel, Ø 3 mm 0003516800
PT 1000.90	Temperature sensor, stainless steel, coated with SafeCoat, Ø 3 mm 0004480600

# Hotplates

# Heating baths | Accessories



**C-MAG HP 7**



Elevated control panel for protection against spilled liquids



Hot top indicator to prevent burns



LED digital display for precise temperature setting



Technical data	
Temperature display	digital
Heat output	250 W
Heating rate	2.5 K/min
Temperature range	50 – 500 °C
Setting accuracy	± 5 K
Safety circuit fixed	550 °C
Control accuracy with sensor	–
Heating plate material	glass ceramic
Weight	3 kg
Dimensions (W x D x H)	150 x 260 x 105 mm

C-MAG HP 4	
Temperature display	digital
Heat output	250 W
Heating rate	2.5 K/min
Temperature range	50 – 500 °C
Setting accuracy	± 5 K
Safety circuit fixed	550 °C
Control accuracy with sensor	–
Heating plate material	glass ceramic
Weight	3 kg
Dimensions (W x D x H)	150 x 260 x 105 mm
Ident. No.	0003581600

C-MAG HP 7	
Temperature display	digital
Heat output	1000 W
Heating rate	5 K/min
Temperature range	50 – 500 °C
Setting accuracy	± 5 K
Safety circuit fixed	550 °C
Control accuracy with sensor	ETS-D5 / ± 0.5 K
Heating plate material	glass ceramic
Weight	5 kg
Dimensions (W x D x H)	220 x 330 x 105 mm
Ident. No.	0003581800

C-MAG HP 10	
Temperature display	digital
Heat output	1500 W
Heating rate	5 K/min
Temperature range	50 – 500 °C
Setting accuracy	± 5 K
Safety circuit fixed	550 °C
Control accuracy with sensor	ETS-D5 / ± 0.5 K
Heating plate material	glass ceramic
Weight	6 kg
Dimensions (W x D x H)	300 x 415 x 105 mm
Ident. No.	0003582000



Technical data	
Heat output	1.300 W
Temperature range	RT – 180 °C
Setting tolerance	± 1 K
Deviation (3 l H <sub>2</sub> O, 90 °C)	± 1 K
Temperature display	digital
Safety class acc. to DIN 12877	2
Adjustable safety circuit min / max	50 °C / 190 °C
Material	stainless steel 1.4301
Weight	3 kg
Dimensions (W x D x H)	290 x 190 x 265 mm

HB 10	
Heat output	1.300 W
Temperature range	RT – 180 °C
Setting tolerance	± 1 K
Deviation (3 l H <sub>2</sub> O, 90 °C)	± 1 K
Temperature display	digital
Safety class acc. to DIN 12877	2
Adjustable safety circuit min / max	50 °C / 190 °C
Material	stainless steel 1.4301
Weight	3 kg
Dimensions (W x D x H)	290 x 190 x 265 mm
Ident. No.	0004068000

HBR 4 digital	
Heat output	1000 W
Temperature range	RT – 200 °C
Setting tolerance	± 1 K
Deviation (3 l H <sub>2</sub> O, 90 °C)	± 1 K
Temperature display	digital
Safety class acc. to DIN 12877	2
Adjustable safety circuit min / max	–
Material	stainless steel (AISI 304)
Weight	4.4 kg
Dimensions (W x D x H)	–
Ident. No.	0002602300

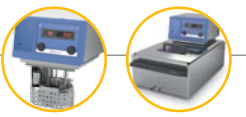
HBR 4 digital accessories	
Ident. No.	
H 240	0002858700
Ring set	
H 159	0001809700
Intermediate bottom	





# Thermostats

# Thermostats | Packages



IC control



Flexible bath bridge enables easy mounting on different water bath sizes



Large easy-to-read TFT display



Removable wireless controller (WiCo) for easy and safe operation up to 40 m



Available 2014

### Technical data

Appliance type	compact immersion circulator
Heater capacity (230 / 115 V)	2000 / 1000 W
Temperature range	RT – 100 °C   RT – 150 °C (20 °C with cooling coil*)
Temperature display	LED   TFT
Temperature stability DIN 12876	± 0.03 K   ± 0.01 K
Bath volume range	depends on used bath
Max. flow rate (at 0 bar)	20 l/min
Max. pump pressure	0.2 bar
Min. suction pressure	0.18 bar
Dimensions (W x D x H)	147 x 158 x 340 mm
USB interface	yes

\* Lower working temperatures possible with connection to a chiller

ICC basic   control
Ident. No. 0004134400   0004136600

IC basic   control
Ident. No. 0003861000   0003863000



IC basic pro 12 c



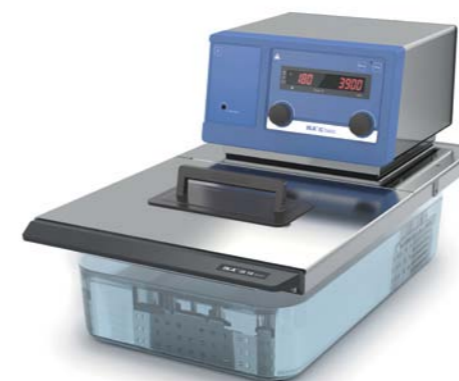
IC control pro 12 C



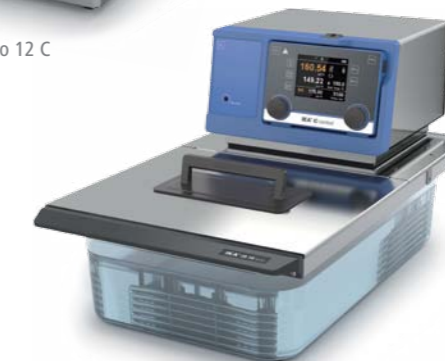
IC basic pro 20 c



IC control pro 20 c



IC basic eco 18 C



IC control eco 18 c

Description	Package name	Ident. No.
Covered heating bath circulator	IC basic eco 18 c	0008036600
	IC basic pro 12 c	0008039900
	IC basic pro 20 c	0008036800
Covered heating bath circulator	IC control eco 18 c	0008037000
	IC control pro 12 c	0008040000
	IC control pro 20 c	0008037200

IKA+

Removable wireless controller (WiCo) for convenient and user-friendly operation!



Package details on page 92  
For accessories, see page 63

# Thermostats



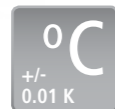
HBC 5 basic



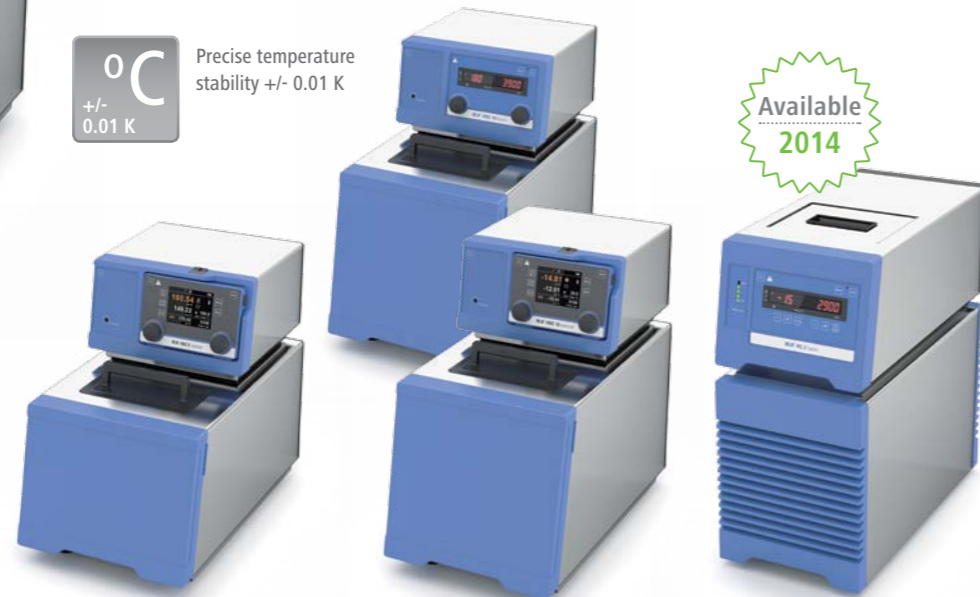
Integrated handles for easy carrying



Optical and acoustic warning function e.g. for over heating



Precise temperature stability +/- 0.01 K



IKA+

Removable wireless controller (WiCo) for convenient and user-friendly operation!



Available 2014

### Technical data

Appliance type	heating bath circulator
Safety class	III (FL)
Cooling capacity at 20°C	–
Heater capacity (230 / 115 V)	2500 / 1200 W
Temperature range	20 – 200 °C   20 – 250 °C (with integrated cooling coil*)
Temperature display	LED   TFT
Temperature stability DIN 12876	± 0.02 K   ± 0.01 K
Bath volume range	5 – 7 l
Max. flow rate (at 0 bar)	20 l/min   26 l/min
Max. pump pressure	0.5 bar   0.7 bar
Min. suction pressure	0.3 bar   0.4 bar
Dimensions (W x D x H)	275 x 500 x 405 mm
Permissible ambient temperature	5 – 40 °C
Permissible relative moisture	80%
Protection class acc. to DIN EN 60529	IP 21
USB / RS 232 interface	yes
* Lower working temperatures possible with connection to a chiller	Ident. No. 0004125000   0004127000

### HBC 5 basic | control

heating bath circulator
III (FL)
–
2500 / 1200 W
20 – 200 °C   20 – 250 °C (with integrated cooling coil*)
LED   TFT
± 0.02 K   ± 0.01 K
5 – 7 l
20 l/min   26 l/min
0.5 bar   0.7 bar
0.3 bar   0.4 bar
275 x 500 x 405 mm
5 – 40 °C
80%
IP 21
yes
Ident. No. 0004125000   0004127000

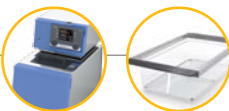
### HBC 10 basic | control

heating bath circulator
III (FL)
–
2500 / 1200 W
20 – 200 °C   20 – 250 °C (with integrated cooling coil*)
LED   TFT
± 0.02 K   ± 0.01 K
8 – 13 l
20 l/min   26 l/min
0.5 bar   0.7 bar
0.3 bar   0.4 bar
275 x 510 x 455 mm
5 – 40 °C
80%
IP 21
yes
Ident. No. 0004135000   0004137000

### RC 2 basic

refrigerated circulator
–
350 W
–
-20 – 40 °C
LED
± 0.5 K
1.4 – 4 l
20 l/min
0.2 bar
0.18 bar
220 x 450 x 478 mm
5 – 40 °C
80%
IP 21
yes
Ident. No. 0004171000

# Thermostats | Accessories



EH 4 basic Immersion thermostat  
EH 4.1 Bath vessel 5 l  
EH 4.2 Bath vessel 11 l  
EH 4.3 Bath vessel 18 l

EH 4 basic Ident. No. 0003164000  
EH 4.1 Bath vessel 5 l Ident. No. 0003335000  
EH 4.2 Bath vessel 11 l Ident. No. 0003335100  
EH 4.3 Bath vessel 18 l Ident. No. 0003335200

### Water bath protective media

Ident. No.	
C 5003.1	0007207700
Aqua Pro stabilizing agent, 2 x 20 ml	

### Tubing and hoses

Ident. No.	
H.PVC.8	0004568800
Hose, PVC, Ø 8 mm, 150 cm length	
H.PVC.12	0004568900
Hose, PVC, Ø 12 mm, 150 cm length	
H.SI.8	0004569000
Hose, silicone, Ø 8 mm, 150 cm length	
H.SI.12	0004569100
Hose, silicone, Ø 12 mm, 150 cm length	
H.PTFE.8	0004569200
Hose, PTFE, Ø 8 mm, 150 cm length	
H.PTFE.12	0004569300
Hose, PTFE, Ø 12 mm, 150 cm length	

### Tubing insulations

Ident. No.	
ISO.8	0004569400
Insulation, Ø 8 mm	
ISO.12	0004569500
Insulation, Ø 12 mm	

### Bridges

Ident. No.	
BS.IC	0004472800
Bridge, small for IC, 8/9 l bath vessels	

### Covers

Ident. No.	
CS.IC	0004471700
Cover, small for IC, 8/9 l bath vessels	

### Bath vessel

Ident. No.	
1 IKA® IB eco 8	0004248100
Bath vessel, plastic, 8 l	
2 IKA® IB eco 18	0004248200
Bath vessel, plastic, 18 l	
3 IKA® IB pro 9	0004248500
Bath vessel, stainless steel, 9 l	
IKA® IB pro 12	0004577500
Bath vessel, stainless steel, 12 l	
4 IKA® IB pro 20	0004248600
Bath vessel, stainless steel, 20 l	

### Other accessories

Ident. No.	
5 LT 5.20	0002606700
Connection hose, insulated, Ø 12 mm, 100 cm length	
6 LT 5.24	0002578100
Hose adapter	
7 PT 100.30	0004284700
Temperature sensor, stainless steel, 250 mm length, max. temp. 300 °C	
CC 1 Cooling Coil (for ICC / IC)	0004365600
Cooling coil for ICC / IC	
CM.IC Cover	0004577600
Cover for IC baths	
PCS.ICC pump connection set (for ICC)	0004471900
Pump connection set for ICC	
MV 1 Solenoid valve for cooling water control	0004577800
Magnetic valve for cooling water control	
CO V 1 Shut-off valve for external temperature	0004577900
Closed pressure valve for external temperature	

AVAILABLE 2014



# Centrifuge



# Rotary Evaporators



Compatible with the complete range of IKA® glassware



Can be moved by 120 mm to accommodate different flasks

RV 8 V



Heating bath can be used as a stand-alone unit and has integrated ergonomic carrying handles



Adjustable immersion angle and height



mini G

Timer

Quiet operation

Safety

Adjustable digital timer

Quiet operation

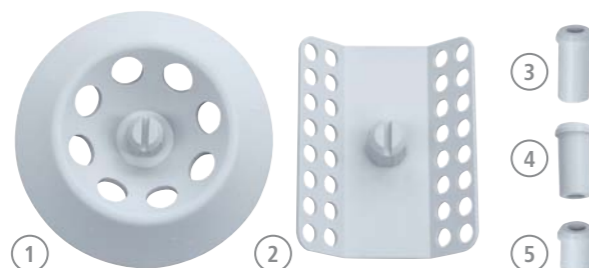
Special safety features



### Technical data

Capacity	8 x 2.0 ml
Permitted density	1.2 kg / dm <sup>3</sup>
Centrifugal acceleration	2000 G
Max. kinetic energy	20 Nm
Motor rating input / output	12 / 8 W
Fixed speed	6000 rpm
Reversible direction of rotation	no
Dimensions (W x D x H)	155 x 175 x 105 mm
Weight	1.4 kg
Ident. No.	0003958000

### mini G



### Accessories included in the delivery

	Ident. No.
Rotor 8 x 1.5 / 2 ml	0003918500
Rotor 4 x strip 8 x 0.2 ml	0004531300
Adapter set 0.5 ml x 8	0004470900
Adapter set 0.4 ml x 8	0004470901
Adapter set 0.2 ml x 8	0004470902

### Drive

Motor type	brushless DC drive motor
Motor rating input	50 W
Speed range	5 – 300 rpm
Speed display	digital
Clockwise and counter-clockwise	no
Soft start	yes
Head angle adjustable	0 to 45°
Stroke displacement	120 mm, manual
Setting of lower end stop	no
Vacuum controller	optional

### General data

Dimensions (W x D x H)	510 x 345 x 490 mm
Weight of the drive incl. heating bath without glass parts	17.2 kg
Permissible ambient temperature	5 to 40 °C
Permissible relative moisture	80%
Protection class according to DIN EN 60529	IP 20
Voltage / Frequency	220 – 240 V / 50/60 Hz

### RV 8

Motor type	brushless DC drive motor
Motor rating input	50 W
Speed range	5 – 300 rpm
Speed display	digital
Clockwise and counter-clockwise	no
Soft start	yes
Head angle adjustable	0 to 45°
Stroke displacement	120 mm, manual
Setting of lower end stop	no
Vacuum controller	optional

Dimensions (W x D x H)

510 x 345 x 490 mm

Weight of the drive incl. heating bath without glass parts

17.2 kg

Permissible ambient temperature

5 to 40 °C

Permissible relative moisture

80%

Protection class according to DIN EN 60529

IP 20

Voltage / Frequency

220 – 240 V / 50/60 Hz

RV 8 V Ident. No. 0008033800

RV 8 V-C Ident. No. 0008034200

RV 8 FLEX Ident. No. 0008033400

### RV 10 basic

Motor type	brushless DC drive motor
Motor rating input	50 W
Speed range	20 – 280 rpm
Speed display	digital
Clockwise and counter-clockwise	yes
Soft start	yes
Head angle adjustable	0 to 45°
Stroke displacement	140 mm, motorized
Setting of lower end stop	60 mm, contact free
Vacuum controller	optional

Dimensions (W x D x H)

530 x 410 x 430 mm

Weight of the drive incl. heating bath without glass parts

20 kg

Permissible ambient temperature

5 to 40 °C

Permissible relative moisture

80%

Protection class according to DIN EN 60529

IP 20

Voltage / Frequency

220 – 240 V / 50/60 Hz

RV 10 basic V Ident. No. 0008040600

RV 10 basic V-C Ident. No. 0008040700

Package details on page 93  
For accessories, see pages 67-69

# Rotary Evaporators



## RV 10 digital

### Drive

Motor type	brushless DC drive motor
Motor rating input	50 W
Speed range	20 – 280 rpm
Speed display	digital
Clockwise and counter-clockwise	yes
Soft start	yes
Head angle adjustable	0 to 45°
Stroke displacement	140 mm, motorized
Setting of lower end stop	60 mm, contact free
Vacuum controller	optional

### General data

Dimensions (W x D x H)	530 x 410 x 430 mm
Weight of the drive incl. heating bath without glass parts	20 kg
Permissible ambient temperature	5 to 40 °C
Permissible relative moisture	80%
Protection class according to DIN EN 60529	IP 20
Voltage / Frequency	220 – 240 V / 50/60 Hz

\* RV 10.4002 Magnetic valve now included with delivery of every RV 10 control V, V-C and FLEX package

RV 10 digital V Ident. No.	0008040300
RV 10 digital V-C Ident. No.	0008040400
RV 10 digital FLEX Ident. No.	0008040500

## RV 10 control

Motor type	brushless DC drive motor
Motor rating input	50 W
Speed range	20 – 280 rpm
Speed display	digital
Clockwise and counter-clockwise	yes
Soft start	yes
Head angle adjustable	0 to 45°
Stroke displacement	140 mm, motorized
Setting of lower end stop	60 mm, contact free
Vacuum controller	integrated

Dimensions (W x D x H)	530 x 410 x 430 mm
Weight of the drive incl. heating bath without glass parts	21.5 kg
Permissible ambient temperature	5 to 40 °C
Permissible relative moisture	80%
Protection class according to DIN EN 60529	IP 20
Voltage / Frequency	220 – 240 V / 50/60 Hz

RV 10 control V Ident. No.	0008037700
RV 10 control V-C Ident. No.	0008037900
RV 10 control FLEX Ident. No.	0008038100
RV 10 control V auto Ident. No.	0008037800
RV 10 control V-C auto Ident. No.	0008038000
RV 10 control FLEX auto Ident. No.	0008038200

Package details on page 93  
For accessories, see pages 67-69

# Rotary Evaporators | Accessories



RV 10 / RV 8 accessories	
Glassware	
	Ident. No.
RV 10.1	0003655300
Set of glassware, vertical	
RV 10.10	0003755400
Set of glassware, vertical, coated	



RV 10.2	0003755300
Set of glassware, diagonal	
RV 10.20	0003755500
Set of glassware, diagonal, coated	



Condensers	
RV 10.3	0003741000
Vertical-intensive condenser, manifold	
RV 10.30	0003741100
Vertical-intensive condenser, manifold, coated	



RV 10.4	0003742000
Dry ice condensor	
RV 10.40	0003742100
Dry ice condenser, coated	



RV 10.5	0003743000
Vertical-condenser, reflux	
RV 10.50	0003743100
Vertical-condenser, reflux, coated	



RV 10.6	0003744000
Vertical-intensive condenser, reflux	
RV 10.60	0003744100
Vertical-intensive condenser, reflux, coated	



Evaporation cylinders	
RV 10.400	0003738800
Evaporation cylinder, NS 29/32, 500 ml	
RV 10.401	0003738900
Evaporation cylinder, NS 29/32, 1500 ml	



Foam brake	
RV 10.500	0003739200
Foam brake, NS 29/32	



Distilling spider with distilling sleeves	
RV 10.600	0003739400
Distilling spider, NS 29/32, 6 sleeves	
RV 10.601	0003739500
Distilling spider, NS 29/32, 12 sleeves	
RV 10.602	0003739600
Distilling spider, NS 29/32, 20 sleeves	
RV 10.610	0003919400
Distilling sleeve, 20 ml	



Distilling spider with 5 flasks	
RV 10.606	0003740800
Distilling spider with 5 flasks, 50 ml	
RV 10.607	0003740900
Distilling spider with 5 flasks, 100 ml	



# Rotary Evaporators | Accessories



## Evaporation flasks

RV 10.80 0003740100

Evaporation flask, NS 29/32, 50 ml

RV 10.81 0003740200

Evaporation flask, NS 29/32, 100 ml

RV 10.82 0003740300

Evaporation flask, NS 29/32, 250 ml

RV 10.83 0003740400

Evaporation flask, NS 29/32, 500 ml

RV 10.84 0003740500

Evaporation flask, NS 29/32, 1000 ml

RV 10.85 0003740600

Evaporation flask, NS 29/32, 2000 ml

RV 10.86 0003740700

Evaporation flask, NS 29/32, 3000 ml

## Receiving flasks

RV 10.100 0003742200

Receiving flask, KS 35/20, 100 ml

RV 10.101 0003742300

Receiving flask, KS 35/20, 250 ml

RV 10.102 0003742400

Receiving flask, KS 35/20, 500 ml

RV 10.103 0003742500

Receiving flask, KS 35/20, 1000 ml

RV 10.104 0003742600

Receiving flask, KS 35/20, 2000 ml

RV 10.105 0003742700

Receiving flask, KS 35/20, 3000 ml

RV 10.200 0003743200

Receiving flask, coated, KS 35/20, 100 ml

RV 10.201 0003743300

Receiving flask, coated, KS 35/20, 250 ml

RV 10.202 0003743400

Receiving flask, coated, KS 35/20, 500 ml

RV 10.203 0003743500

Receiving flask, coated, KS 35/20, 1000 ml

RV 10.204 0003743600

Receiving flask, coated, KS 35/20, 2000 ml

RV 10.205 0003743700

Receiving flask, coated, KS 35/20, 3000 ml



## Powder flasks

RV 10.300 0003738200

Powder flask, NS 29/32, 500 ml

RV 10.301 0003738300

Powder flask, NS 29/32, 1000 ml

RV 10.302 0003738400

Powder flask, NS 29/32, 2000 ml

## Vapour tubes, seals and other accessories

RV 10.70 0003812200

Vapor tube, NS 29/32

RV 10.74 0003971700

Vapor tube, short, NS 29/32

RV 10.8001 0003907000

Seal, PTFE, stainless steel

RV 10.3000 0003859000

Extension plate for use with RV 10.500 foam break and 3 l evaporation flask

## HB 10 heating bath accessories

Ident. No.

HB 10.1 0003641800

Shield for heating bath HB 10

HB 10.2 0003641000

Protection cover for heating bath HB 10

## Vacuum pumps

Ident. No.

N 920 KT.29.18 0003919100

Membrane vacuum pump

SC 920 D400 0004583600

Vacuum pump

MPC 105 T 0004067700

Vacuum pump

LVS 105T-10 ef 0004067800

Vacuum pump

VCV 1 0004249900

Vacuum control valve manual



## RV 10 control accessories

### Vacuum pump valves

1 RV 10.4001 0003902600

Magnetic valve in-house vacuum

2 RV 10.4002 0003880300

Magnetic valve laboratory vacuum

3 RV 10.4003 0003900200

Pump control including magnetic valve

4 RV 10.5001 0003902700

Choke water valve

5 RV 10.5002 0003903800

Filter

6 RV 10.5003 0003907100

Pressure regulating valve



# Mechanical Accessories



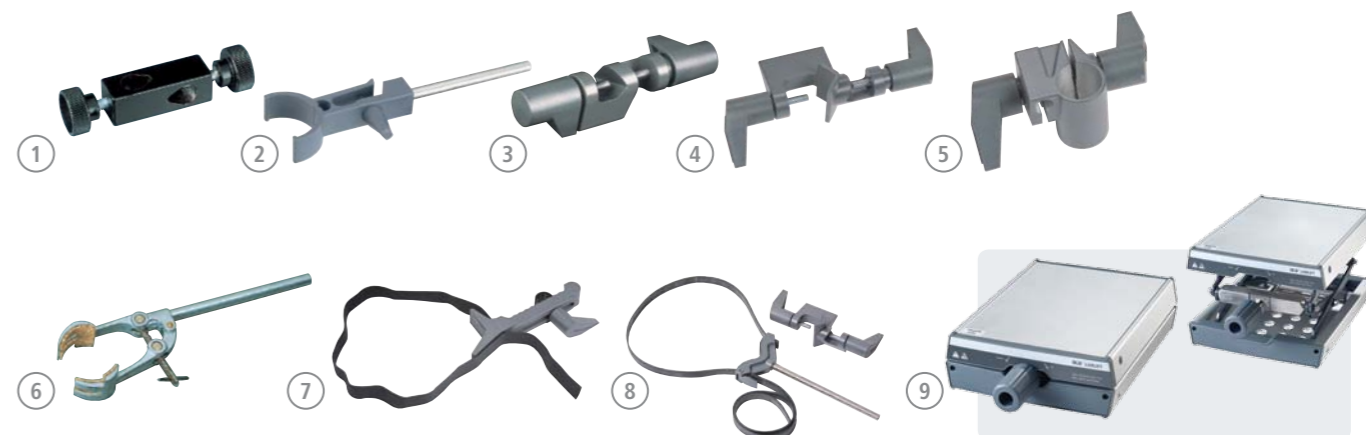
## Mechanical accessories

	Diameter of support rod	Dimensions (W x D)	Height	Max. load	Stroke	Ident. No.
1 R 104 Stand Stand for T 10 basic, H370 mm	10 mm	242 x 355 mm	370 mm	0,7 kg	–	0003386000
2 R 1825 Plate stand Plate stand, H560 mm	16 mm	200 x 316 mm	560 mm	5 kg	–	0003160000
3 R 1826 Plate stand Plate stand, H800 mm	16 mm	200 x 316 mm	800 mm	5 kg	–	0003160100
4 R 1827 Plate stand Plate stand, H1000 mm	16 mm	200 x 316 mm	1.000 mm	5 kg	–	0003160200
5 R 2722 H-Stand H-Stand, 1010 mm	34 mm	460 x 420 mm	1.010 mm	10 kg	–	0001412000
6 R 2723 Telescopic stand Telescopic stand, H620-1010 mm	34 mm	460 x 420 mm	620 – 1.010 mm	10 kg	390 mm	0001412100
7 T 653 Telescopic stand Telescopic stand, H1200 mm	48 mm	460 x 530 mm	1.200 mm	–	500 – 1.000 mm	0001608000
8 R 474 Telescopic stand Telescopic stand, H1200 mm	48 mm	460 x 530 mm	1.200 mm	–	500 – 1.000 mm	0001643000
9 R 472 Floor stand Floor stand, H2020 mm	–	80 x 80 mm	2.020 mm	–	980 – 1.860 mm	0000738700
10 R 4765 Floor stand Floor stand, H1014 – 1588 mm	–	–	–	–	–	0004035000



AVAILABLE 2014

# Mechanical / Electronic Accessories



## Mechanical accessories Fixing elements

	Ident. No.		Ident. No.
1 H 44 Boss head clamp, clamping range Ø 10-11 mm	0002437700	7 RH 3 Strap clamp for stand Ø 8-16 mm	0003008600
2 R 200 Clamp for T 10 basic and R 104	0003372000	8 RH 5 Strap clamp for stand Ø 8-16 mm	0003159000
3 R 182 Boss head clamp, clamping range Ø 6-16 mm	0002657700	<b>Lifts</b>	
4 R 270 Boss head clamp, clamping range Ø 25-36 mm	0002657800	9 LABLIFT m Manual scissor lift	0004022400
5 R 271 Boss head clamp, clamping range Ø 34 mm	0002664000		
6 R 350 Universal clamp	0001752900		



## Electronic accessories Temperature measuring instruments

	Ident. No.
1 ALMEMO 2490 The ALMEMO 2490 is a universal measuring device with 2 measuring channels. Especially adopted for the requirements of either simple temperature measuring purposes and as an accessory for our lab reactors to measure and display temperature and/or pH.	0004709300

## ALMEMO accessories

ALMEMO USB-cable USB-cable	0004709400
DTM 12.15 Adapter cable for pH electrode	0003128300
PC 1.2 Adapter, 25 pins	0002616800
PH 225.1 Electrode temperature sensor	0003122600

2 DTM 12.10 Data cable, L2.5 m, 9 pins (F)	0003127800
3 PT 100.23 Temperature sensor, stainless steel, Ø 3 mm, 250 mm length	0003122100
4 PT 100.24 Temperature sensor, stainless steel, glass-coated, Ø 8 mm, 250 mm length	0003122200
5 PT 100.25 Temperature sensor, stainless steel, Ø 6 mm, 255 mm length	0003122300



# Laboratory Reactors




LR 1000 basic


Technical data	
Usable volume	400 – 1000 ml
Max. working temperature	120 °C
Nominal torque	3 Nm
Attainable vacuum	25 mbar
Max. viscosity	100,000 mPas
Speed range	10 – 150 rpm
Display	LED   TFT
Heat output	1000 W
Heat control accuracy	± 1 K
Dimensions (W x D x H)	443 x 295 x 360 mm
Weight	16 kg
Permissible ambient temperature	5 – 40 °C
Permissible relative moisture	80%


LR 1000 basic   LR 1000 control	
Usable volume	400 – 1000 ml
Max. working temperature	120 °C
Nominal torque	3 Nm
Attainable vacuum	25 mbar
Max. viscosity	100,000 mPas
Speed range	10 – 150 rpm
Display	LED   TFT
Heat output	1000 W
Heat control accuracy	± 1 K
Dimensions (W x D x H)	443 x 295 x 360 mm
Weight	16 kg
Permissible ambient temperature	5 – 40 °C
Permissible relative moisture	80%

### LR 1000 control

 Torque trend measurement indicates changes in viscosity of the product

 Large, easy-to-read TFT display for better image quality and easy navigation

 Possibility to connect pH electrode

 USB interface to control and document rheological changes and other parameters using labworldsoft® software and for updating the firmware



reddot design award winner 2013

LR 1000 basic Package*	
	Ident. No.
H 11 Main cable Euro plug	0001091500
LR 1000 basic base	0003600099
LR 1000.1 Reactor vessel	0003602000
LR 1000.61 Sensor receptacle	0004664400
PT 100.5 Temperature sensor	0002506800
LR 1000 basic Package	0008040100

\* PT 100.5 included in the delivery for measuring the external temperature

LR 1000 control Package*	
	Ident. No.
H 11 Main cable Euro plug	0001091500
LR 1000 control base	0003600099
LR 1000.1 Reactor vessel	0003602000
LR 1000.61 Sensor receptacle	0004664400
PT 100.5 Temperature sensor	0002506800
USB cable USB A-Micro B 2.0	0004335000
LR 1000 control Package	0008040200





### LR 1000 accessories

Ident. No.  
LR 1000.1 0003602000

Reactor vessel, 1000 ml

LR 1000.10 0004663100

Anchor stirrer with PTFE scrapers

LR 1000.11 0004663000

Anchor stirrer, stainless steel

LR 1000.20 0004663200

Flow breaker / baffle, stainless steel

LR 1000.41 0004664300

Shaft receptacle to install the dispersing elements  
S 25 KV

LR 1000.61 0004664400

Sensor receptacle to install the temperature sensors  
PT 100.25 and PT 100.5

LR 1000.64 0004663300

pH electrode

LR 1000.65 0004663400

pH electrode receptacle



### Technical data

Min. volume (anchor stirrer)	500 ml
Min. volume (T 25 digital)	800 ml
Max. volume	2000 ml
Max. working temperature	230 °C
Attainable vacuum	25 mbar
Max. viscosity (EUROSTAR 200 control P4)	150,000 mPas
Speed range (EUROSTAR 200 control P4)	0/4 – 530 rpm
Height of telescopic stand	620 – 1010 mm
Dimensions (W x D x H)	460 x 430 x 1.240 mm
Metals in contact with medium	stainless steel (AISI 316L) FFPM borosilicate glass 3.3

### LR-2.ST Package 1\*

Basic package with reactor cover (sealing material: FFPM) consisting of:

- Stand system LR-2.ST
- LR-2.SI Safety disconnection
- EUROSTAR 200 control P4
- LR 2000.11 Anchor stirrer with flow borings
- LR 2.1 Single-walled reactor vessel

Ident. No. 0009023600

\* HBR 4 Heating bath not included in the package, see page 59

### LR-2.ST Package 2

Basic package with reactor cover (sealing material: FFPM) consisting of:

- Stand system LR-2.ST
- LR-2.SI Safety disconnection
- EUROSTAR 200 control P4
- LR 2000.11 Anchor stirrer with flow borings
- LR 2000.1 Double-walled reactor vessel with quick-action connectors

Ident. No. 0009023700

### LR-2.ST Package 3

Basic package with reactor cover (sealing material: FFPM) consisting of:

- Stand system LR-2.ST
- LR-2.SI Safety disconnection
- EUROSTAR 200 control P4
- LR 2000.11 Anchor stirrer with flow borings
- LR 2000.2 Double-walled reactor vessel with quick-action connectors and bottom discharge valve

Ident. No. 0009023800





## LR-2.ST accessories

	Ident. No.
1 LR 2000.10	0002508400
Anchor stirrer with PTFE scraper	
2 LR 2000.11	0002509500
Anchor stirrer, stainless steel	
3 LR 2000.20	0002508500
Flow breaker / baffle, stainless steel	
4 LR 2.1	0003070000
Reactor vessel, single-walled, 2000 ml	
5 LR 2000.1	0002508300
Reactor vessel, double-walled, 2000 ml	
LR 2000.2	0002509600
Reactor vessel, double-walled, 2000 ml with bottom drain	
6 LR 2000.40	0002509200
Shaft receptacle to install the dispersing elements S 25 KV	
7 LR 2000.60	0002509300
Sensor receptacle to install the temperature sensors PT 100.25 and PT 100.5	
LR 2000.65	0003172600
pH measuring sensor receptacle	
PH 225.1	0003122600
pH electrode with temperature sensor	
LR-2.SP	0003326400
Splinter shield	

## Common accessories

	Ident. No.
8 T 25 digital	0003725000
Disperser	
9 S 25 KV - 25 F	0002404000
Dispersing element	
10 S 25 KV - 25 G	0002466900
Dispersing element	
11 S 25 KV - 18 G	0002348000
Dispersing element	
12 PT 100.5	0002506800
Temperature sensor	
13 labworldsoft®	0004720000
laboratory software	



IKA® ALPHA Series

Available 2014



Ultra light weight and ergonomic design for comfortable control



Supplied with individual quality certificate (QC) and calibration report as per ISO 8655



Fully autoclavable for easy sterilization

IKA® ALPHA fix		Ident. No.
IKA® ALPHA fix   2.5 µl	●	0004391300
IKA® ALPHA fix   5 µl	●	0004390000
IKA® ALPHA fix   10 µl	●	0004390100
IKA® ALPHA fix   20 µl	●	0004390200
IKA® ALPHA fix   25 µl	●	0004390300
IKA® ALPHA fix   50 µl	●	0004390400
IKA® ALPHA fix   100 µl	●	0004390500
IKA® ALPHA fix   200 µl	●	0004390600
IKA® ALPHA fix   250 µl	●	0004390700
IKA® ALPHA fix   500 µl	●	0004390800
IKA® ALPHA fix   1000 µl	●	0004390900
IKA® ALPHA fix   2 ml	●	0004391000
IKA® ALPHA fix   5 ml	●	0004391100
IKA® ALPHA fix   10 ml	●	0004391200

IKA® ALPHA vario		Ident. No.
IKA® ALPHA vario   0.1 – 2.5 µl	●	0004393200
IKA® ALPHA vario   0.5 – 10 µl	●	0004392000
IKA® ALPHA vario   2 – 20 µl	●	0004392600
IKA® ALPHA vario   5 – 50 µl	●	0004392100
IKA® ALPHA vario   10 – 100 µl	●	0004392400
IKA® ALPHA vario   20 – 200 µl	●	0004392700
IKA® ALPHA vario   50 – 200 µl	●	0004392200
IKA® ALPHA vario   100 – 1000 µl	●	0004392500
IKA® ALPHA vario   200 – 1000 µl	●	0004392300
IKA® ALPHA vario   0.5 – 5 ml	●	0004392900
IKA® ALPHA vario   1 – 5 ml	●	0004392800
IKA® ALPHA vario   0.5 – 10 ml	●	0004393100
IKA® ALPHA vario   1 – 10 ml	●	0004393000

Colors stand for volume range



IKA® LINEA 3  
Pipette stand  
Ident. No. 0004410000



## IKA® Pipette Calibration Software

Hardware and software requirements:  
Windows XP (SP2), Windows Vista, Windows 7, Windows 8 and at least one free USB or RS 232 (9 pin Sub-D (M)) serial interface.  
Processor with min. 1.6 GHz (single core-Processor); 2 GB RAM; 2.5 GB free hard-disc space; DVD-ROM-drive  
Ident. No. 0004719000

# Pipettes | PRECISION Series

IKA® PRECISION Series



Locking mechanism prevents accidental volume change (Only for IKA® PRECISION series)



Resistant to UV radiation for enhanced durability



Fully autoclavable for easy sterilization



Volume range color coding for easy pipette selection

Available 2014



IKA® PRECISION fix		Ident. No.
IKA® PRECISION fix   2.5 µl	●	0004394000
IKA® PRECISION fix   5 µl	●	0004394100
IKA® PRECISION fix   10 µl	●	0004394200
IKA® PRECISION fix   20 µl	●	0004394300
IKA® PRECISION fix   25 µl	●	0004394400
IKA® PRECISION fix   50 µl	●	0004394500
IKA® PRECISION fix   100 µl	●	0004394600
IKA® PRECISION fix   200 µl	●	0004394700
IKA® PRECISION fix   250 µl	●	0004394800
IKA® PRECISION fix   500 µl	●	0004394900
IKA® PRECISION fix   1000 µl	●	0004395000
IKA® PRECISION fix   2 ml	●	0004395100
IKA® PRECISION fix   5 ml	●	0004395200
IKA® PRECISION fix   10 ml	●	0004395300

Colors stand for volume range

IKA® PRECISION vario		Ident. No.
IKA® PRECISION vario   0.1 – 2.5 µl	●	0004396000
IKA® PRECISION vario   0.5 – 10 µl	●	0004396100
IKA® PRECISION vario   2 – 20 µl	●	0004396500
IKA® PRECISION vario   5 – 50 µl	●	0004396200
IKA® PRECISION vario   10 – 100 µl	●	0004396300
IKA® PRECISION vario   20 – 200 µl	●	0004396600
IKA® PRECISION vario   100 – 1000 µl	●	0004396400
IKA® PRECISION vario   0.5 – 5 ml	●	0004396700
IKA® PRECISION vario   1 – 10 ml	●	0004396800

# Pipettes | MULTICHANNEL Series

IKA® Precision MC Series



Clear 4 digit display for volume setting



Chemically resistant, shock proof tip cone



Fully autoclavable for easy sterilization

Available 2014



IKA® PRECISION MC 8		Ident. No.
IKA® PRECISION MC 8   0.5 – 10 µl	●	0004398000
IKA® PRECISION MC 8   2 – 20 µl	●	0004398500
IKA® PRECISION MC 8   5 – 50 µl	●	0004398100
IKA® PRECISION MC 8   10 – 100 µl	●	0004398200
IKA® PRECISION MC 8   20 – 200 µl	●	0004398300
IKA® PRECISION MC 8   30 – 300 µl	●	0004398400

IKA® PRECISION MC 12		Ident. No.
IKA® PRECISION MC 12   0.5 – 10 µl	●	0004399000
IKA® PRECISION MC 12   2 – 20 µl	●	0004399500
IKA® PRECISION MC 12   5 – 50 µl	●	0004399100
IKA® PRECISION MC 12   10 – 100 µl	●	0004399200
IKA® PRECISION MC 12   20 – 200 µl	●	0004399300
IKA® PRECISION MC 12   30 – 300 µl	●	0004399400





# Pipette Tips

IKA® range of pipette tips includes both filter and non-filter tips. They provide more accurate sample dispensing and increased level of reproducibility.

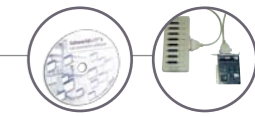
They are easier to load and eject for reduced hand fatigue. The filtered tips are essential in critical applications, such as PCR, forensics, DNA amplification, clinical diagnostics etc to ensure protection of samples and pipettes against cross-contamination.

Available  
2014

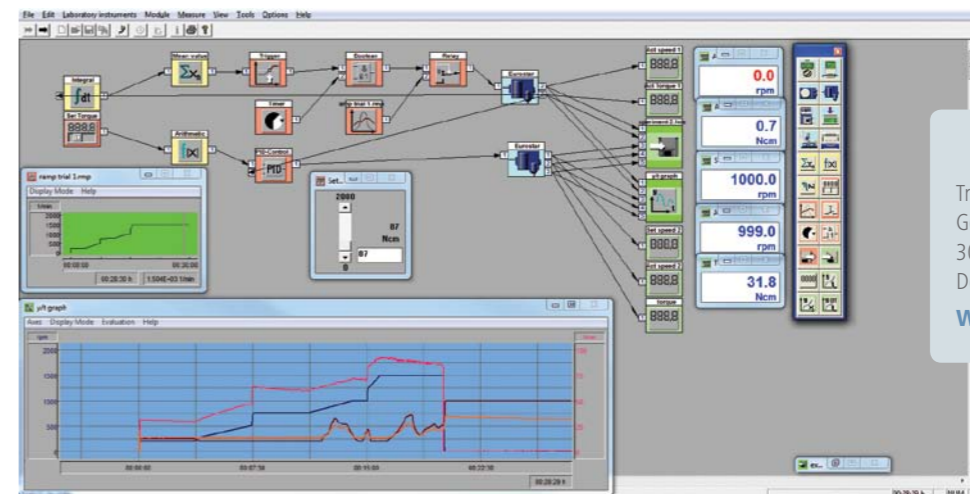


Tip name	Volume	Description	Ident. No.
B10G	10 µl	Graduated, Bulk pack of 1000 tips, L31	0004474000
B10GL	10 µl	Graduated, Low Retention, Bulk pack of 1000 tips, L31	0004693100
R10G	10 µl	Graduated, Pack of 10 racks X 96 tips, L31	0004476000
R10GS	10 µl	Graduated, Sterile, Pack of 10 racks X 96 tips, L31	0004477000
R10GL	10 µl	Graduated, Low Retention, Pack of 10 racks X 96 tips, L31	0004693700
R10GF	10 µl	Graduated, Filter, Pack of 10 racks X 96 tips, L31	0004693800
R10GSL	10 µl	Graduated, Sterile, Low Retention, Pack of 10 racks X 96 tips, L31	0004693900
R10GSF	10 µl	Graduated, Sterile, Filter, Pack of 10 racks X 96 tips, L31	0004479000
R10GLF	10 µl	Graduated, Low Retention, Filter, Pack of 10 racks X 96 tips, L31	0004694000
R10GSLF	10 µl	Graduated, Sterile, Low Retention, Filter, Pack of 10 racks X 96 tips, L31	0004694100
T10G	10 µl	Graduated, Pack of 10 reloading trays x 96 tips, L31	0004478000
T10GS	10 µl	Graduated, Sterile, Pack of 10 reloading trays x 96 tips, L31	0004694200
T10GL	10 µl	Graduated, Low Retention, Pack of 10 reloading trays x 96 tips, L31	0004694300
T10GSL	10 µl	Graduated, Sterile, Low Retention, Pack of 10 reloading trays x 96 tips, L31	0004694400
B10E	20 µl	Extended, Bulk pack of 1000 tips, L38	0004474100
R20E	20 µl	Extended, Pack of 10 racks X 96 tips, L38	0004476100
R20ES	20 µl	Extended, Sterile, Pack of 10 racks X 96 tips, L38	0004477100
R20ESF	20 µl	Extended, Sterile, Filter, Pack of 10 racks X 96 tips, L38	0004479100
T20E	20 µl	Extended, Pack of 14 reloading trays x 96 tips, L38	0004478100
B20G	20 µl	Graduated, Bulk pack of 1000 tips, L45	0004474200
R20G	20 µl	Graduated, Pack of 10 racks X 96 tips, L45	0004476200
R20GS	20 µl	Graduated, Sterile, Pack of 10 racks X 96 tips, L45	0004477200
B20GF	20 µl	Graduated, Filter, Bulk pack of 1000 tips, L53	0004694600
R20GSF	20 µl	Graduated, Sterile, Filter, Pack of 10 racks X 96 tips, L53	0004694500
R20GF	20 µl	Graduated, Filter, Pack of 10 racks X 96 tips, L53	0004695000
R20GLF	20 µl	Graduated, Low Retention, Filter, Pack of 10 racks X 96 tips, L53	0004695100
R20GSLF	20 µl	Graduated, Sterile, Low Retention, Filter, Pack of 10 racks X 96 tips, L53	0004695200
B50GF	50 µl	Graduated, Filter, Bulk pack of 1000 tips, L53	0004695300
R40GSF	40 µl	Graduated, Sterile, Filter, Pack of 10 racks X 96 tips, L50	0004479200
R50GF	50 µl	Graduated, Filter, Pack of 10 racks X 96 tips, L53	0004695700
R50GSF	50 µl	Graduated, Sterile, Filter, Pack of 10 racks X 96 tips, L53	0004695800
R50GLF	50 µl	Graduated, Low Retention, Filter, Pack of 10 racks X 96 tips, L53	0004695900
R50GSLF	50 µl	Graduated, Sterile, Low Retention, Filter, Pack of 10 racks X 96 tips, L53	0004696000
B100GF	100 µl	Graduated, Filter, Bulk pack of 1000 tips, L53	0004696100
R100GF	100 µl	Graduated, Filter, Pack of 10 racks X 96 tips, L53	0004696500
R100GSF	100 µl	Graduated, Sterile, Filter, Pack of 10 racks X 96 tips, L53	0004479300
R100GLF	100 µl	Graduated, Low Retention, Filter, Pack of 10 racks X 96 tips, L53	0004696600
R100GSLF	100 µl	Graduated, Sterile, Low Retention, Filter, Pack of 10 racks X 96 tips, L53	0004696700
B200G	200 µl	Graduated, Bulk pack of 1000 tips, L53	0004474300
B200GL	200 µl	Graduated, Low Retention, Bulk pack of 1000 tips, L53	0004696900

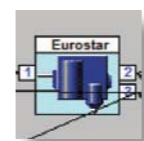
Tip name	Volume	Description	Ident. No.
R200G	200 µl	Graduated, Pack of 10 racks X 96 tips, L53	0004476300
R200GS	200 µl	Graduated, Sterile, Pack of 10 racks X 96 tips, L53	0004477300
R200GL	200 µl	Graduated, Low Retention, Pack of 10 racks X 96 tips, L53	0004697500
R200GF	200 µl	Graduated, Filter, Pack of 10 racks X 96 tips, L53	0004697600
R200GSL	200 µl	Graduated, Sterile, Low Retention, Pack of 10 racks X 96 tips, L53	0004697700
R200GSF	200 µl	Graduated, Sterile, Filter, Pack of 10 racks X 96 tips, L53	0004479400
R200GLF	200 µl	Graduated, Low Retention, Filter, Pack of 10 racks X 96 tips, L53	0004697800
R200GSLF	200 µl	Graduated, Sterile, Low Retention, Filter, Pack of 10 racks X 96 tips, L53	0004697900
T200G	200 µl	Graduated, Pack of 10 reloading trays x 96 tips, L53	0004478300
T200GS	200 µl	Graduated, Sterile, Pack of 10 reloading trays x 96 tips, L53	0004698000
T200GL	200 µl	Graduated, Low Retention, Pack of 10 reloading trays x 96 tips, L53	0004698100
T200GSL	200 µl	Graduated, Sterile, Low Retention, Pack of 10 reloading trays x 96 tips, L53	0004698200
B300	300 µl	Bulk pack of 1000 tips, L71	0004474400
R300	300 µl	Pack of 6 racks X 96 tips, L71	0004476400
R300S	300 µl	Sterile, Pack of 6 racks X 96 tips, L71	0004477400
R300GSF	300 µl	Graduated, Sterile, Filter, Pack of 6 racks X 96 tips, L73	0004479500
T300G	300 µl	Graduated, Pack of 6 reloading trays x 96 tips, L71	0004478400
B1000G	1000 µl	Graduated, Bulk pack of 1000 tips, L84	0004474500
B1000GL	1000 µl	Graduated, Low Retention, Bulk pack of 1000 tips, L84	0004698400
R1000G	1000 µl	Graduated, Pack of 6 racks X 96 tips, L84	0004476500
R1000GS	1000 µl	Graduated, Sterile, Pack of 6 racks X 96 tips, L84	0004477500
R1000GL	1000 µl	Graduated, Low Retention, Pack of 6 racks X 96 tips, L84	0004699000
R1000GF	1000 µl	Graduated, Filter, Pack of 6 racks X 96 tips, L84	0004699100
R1000GSL	1000 µl	Graduated, Sterile, Low Retention, Pack of 6 racks X 96 tips, L84	0004699200
R1000GSF	1000 µl	Graduated, Sterile, Filter, Pack of 6 racks X 96 tips, L84	0004479600
R1000GLF	1000 µl	Graduated, Low Retention, Filter, Pack of 6 racks X 96 tips, L84	0004699300
R1000GSLF	1000 µl	Graduated, Sterile, Low Retention, Filter, Pack of 6 racks X 96 tips, L84	0004699400
T1000G	1000 µl	Graduated, Pack of 5 reloading trays x 96 tips, L84	0004699500
T1000GS	1000 µl	Graduated, Sterile, Pack of 5 reloading trays x 96 tips, L84	0004699600
T1000GL	1000 µl	Graduated, Low Retention, Pack of 5 reloading trays x 96 tips, L84	0004699700
T1000GSL	1000 µl	Graduated, Sterile, Low Retention, Pack of 5 reloading trays x 96 tips, L84	0004699800
B1250E	1250 µl	Extended, Bulk pack of 1000 tips, L89	0004474600
R1250E	1250 µl	Extended, Pack of 6 racks X 96 tips, L89	0004476600
R1250ES	1250 µl	Extended, Sterile, Pack of 6 racks X 96 tips, L89	0004477600
R1250GSF	1250 µl	Graduated, Sterile, Filter, Pack of 6 racks X 96 tips, L89	0004479700
T1250E	1250 µl	Extended, Pack of 5 reloading trays x 96 tips, L89	0004478600
B5000G_P	5 ml	Graduated, PRECISION, Bulk pack of 100 tips, L150	0004474800
B5000G_A	5 ml	Graduated, ALPHA, Bulk pack of 100 tips, L120	0004706800
B10000G_P	10 ml	Graduated, PRECISION, Bulk pack of 100 tips, L165	0004474900
B10000G_A	10 ml	Graduated, ALPHA, Bulk pack of 100 tips, L150	0004706900



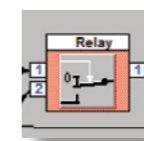
labworldsoft®



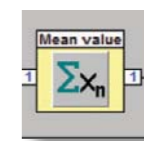
**IKA®+**  
 Try it for yourself!  
 Get your free, fully functional,  
 30-day trial version  
 Download at:  
[www.ika.com](http://www.ika.com)



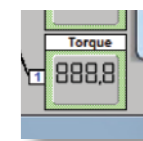
Blue modules represent laboratory devices that are physically present (hardware)



Red modules are used for manual and automatic control of devices



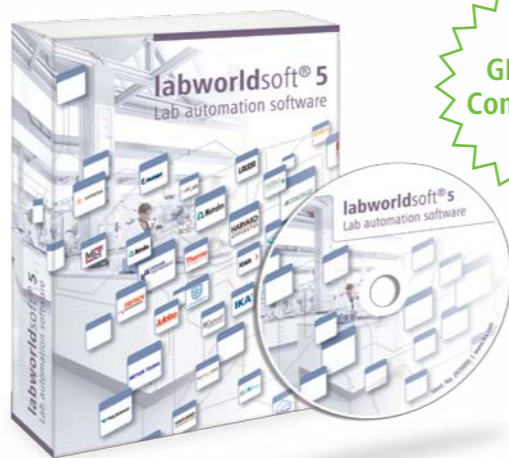
Yellow modules are used for arithmetic operations and to derive average values



Green modules are used for numeric or graphic display of measured values

Advanced software with an innovative visual approach to lab automation.

labworldsoft® is a multi-purpose software program for measuring, controlling and regulating laboratory devices. It can network up to 64 devices simultaneously via one PC, thus making the automation of your laboratory experiments and processes much more easy and efficient. It not only integrates IKA® laboratory devices but also supports devices from other manufacturers.

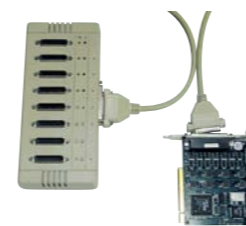


**GLP/GMP Compliance!**

labworldsoft®	
Hardware and software requirements	Pentium processor with at least 16 MB RAM, 8 MB free hard disc memory, VGA-Display: monochrome with at least 16 levels of gray or color, Windows 95/98/2000/NT/ME/XP/7 and com ports can be upgraded for special needs.
	Ident. No. 0004720000

**Accessories**

**PCI 8.2 Plug-in card**  
 For mounting in the PC to connect up to 8 instruments simultaneously.  
 Ident. No. 0008017500



**PC 4.1 RS 232 Server**  
 Can control up to 4 lab units through the ethernet. The server supports 4 RS 232 ports with a 10/100 mbps ethernet interface by TCP/IP. The server can be set-up through the ethernet and works as a transparent serial COM-Port without restrictions of platform and distance.  
 Ident. No. 0003192000



Cable	Length	Ident. No.
PC 1.1 Cable	3 m	0002616700
PC 1.5 Cable	2,5 m	0002756000
PC 2.1 Cable	5 m	0002700700
PC 2.3 Cable	3 m	0003036200
DTM 12.10 Cable	2,5 m	0003127800
Adapter		
PC 1.2 Adapter	—	0002616800
PC 1.4 Adapter	—	0002755900
PC 2.2 Adapter	—	0002753200
PC 5.1 Adapter	—	0002621500

\* For more information on cables and adapters, please visit our website [www.ika.com](http://www.ika.com)





# Calorimeters

C 1



The traditional heavy screw threaded bomb has been replaced by a light combustion chamber



Automatic oxygen filling, venting and flushing



Software provides control chart view and correction calculation of globally used standards



RFID technology used for decomposition vessel identification



Easy bomb preparation due to new "turned around" crucible holder technology

C 6000



C 1	
<b>Technical data</b>	
Maximum energy input	40,000 J
Resolution of the temperature sensor	0.0001
Power ON-time	100 %
Operating oxygen pressure	30 bar
Measuring modes / Measurements per hour	Static jacket (Regnault Pfaundler) 4
Start temperature settings	2 possible settings: 22 °C or 30 °C
RSD (using NIST benzoic acid 39j)	Static jacket (Regnault Pfaundler) 0.15%
Number of decomposition vessel per unit	up to 4
	C 1 Ident. No. 0003825000 C 1 h Ident. No. 0004505000 C 1 Package 1/10 Ident. No. 0008804900 C 1 h Package 1/12 Ident. No. 0008805000 C 1 Package 2/10 Ident. No. 0008805100 C 1 h Package 2/12 Ident. No. 0008805200

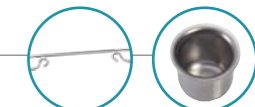
C 6000 isoperibol	
replaces C 2000	
Maximum energy input	40,000 J
Resolution of the temperature sensor	0.0001
Power ON-time	100 %
Operating oxygen pressure	30 bar
Measuring modes / Measurements per hour	Isoperibol (Regnault Pfaundler) 4 Dynamic 6
Start temperature settings	3 possible settings: 22 °C, 25 °C, 30 °C
RSD (using NIST benzoic acid 39j)	Isoperibol (Regnault Pfaundler) 0.05% Dynamic 0.15%
Number of decomposition vessel per unit	up to 4
	Package 1/10 Ident. No. 0008804500 Package 1/12 Ident. No. 0008804600 Package 2/10 Ident. No. 0008804700 Package 2/12 Ident. No. 0008804800

C 6000 global standards	
replaces C 2000; C 5000	
Maximum energy input	40,000 J
Resolution of the temperature sensor	0.0001
Power ON-time	100 %
Operating oxygen pressure	30 bar
Measuring modes / Measurements per hour	Adiabatic 5 Isoperibol (Regnault Pfaundler) 4 Dynamic 6
Start temperature settings	3 possible settings: 22 °C, 25 °C, 30 °C
RSD (using NIST benzoic acid 39j)	Adiabatic 0.05% Isoperibol (Regnault Pfaundler) 0.05% Dynamic 0.15%
Number of decomposition vessel per unit	up to 4
	Package 1/10 Ident. No. 0008804100 Package 1/12 Ident. No. 0008804200 Package 2/10 Ident. No. 0008804300 Package 2/12 Ident. No. 0008804400

C 200	
<b>Technical data</b>	
Maximum energy input	40,000 J
Resolution of the temperature sensor	0.0001
Power ON-time	continuous operation
Operating oxygen pressure	–
Measuring modes / Measurements per hour	Isoperibol 3 Dynamic 5 Manual (Isoperibol) 3 Time-controlled 4
Start temperature settings	18 – 25 °C
RSD (using NIST benzoic acid 39j)	Isoperibol 0.1 % Dynamic 0.1 % Manual (Isoperibol) 0.1 % Time-controlled 0.1 %
Number of decomposition vessel per unit	up to 4
	C 200 Ident. No. 0008802500 C 200 h Ident. No. 0008803700

C 2000	
Maximum energy input	40,000 J
Resolution of the temperature sensor	0.0001
Power ON-time	continuous operation
Operating oxygen pressure	30 bar
Measuring modes / Measurements per hour	Isoperibol 3 Dynamic 6
Start temperature settings	2 possible settings: 25 °C or 30 °C
RSD (using NIST benzoic acid 39j)	Isoperibol 0.05% Dynamic 0.1 %
Number of decomposition vessel per unit	up to 4
	basic Version 1 Ident. No. 0008801800 basic Version 2 Ident. No. 0008801900 control Version 1 Ident. No. 0008802000 control Version 2 Ident. No. 0008802100 Extension device Ident. No. 0008802200

C 5000	
Maximum energy input	40,000 J
Resolution of the temperature sensor	0.0001
Power ON-time	continuous operation
Operating oxygen pressure	30 bar
Measuring modes / Measurements per hour	Adiabatic 4 Isoperibol 3 Dynamic 6
Start temperature settings	Package 1: 22 °C / Package 2: 25 °C
RSD (using NIST benzoic acid 39j)	Adiabatic 0.05 % Isoperibol 0.05 % Dynamic 0.1 %
Number of decomposition vessel per unit	up to 4
	Package 1/10 Ident. No. 0008803000 Package 1/12 Ident. No. 0008803300 Package 2/10 Ident. No. 0008803200 Package 2/12 Ident. No. 0008803400



## C 1 Accessories and consumables

	Ident. No.
<b>C 1.20</b>	0004501000
Water heater	
<b>C 1.50</b>	0004500600
Dot matrix printer	
<b>C 1.35</b>	0004500800
Venting bottle	
<b>C 1.1012</b>	0004500700
Organizer	
<b>C 1.30</b>	0004500900
Gas washing station	
<b>C 1.10</b>	0004500300
Inner vessel, complete	
<b>C 1.12</b>	0004500400
Inner vessel, complete, halogen resistant	
<b>C 1.101</b>	0004502200
Set of spare parts, approx. 1000 experiments	
<b>C 1.121</b>	0004502300
Set of spare parts, halogen resistant, approx. 1000 experiments	

## C 1 and C 6000 consumables

	Ident. No.
① <b>C 1.103</b>	0004579300
Ignition wire, standard, Kantal, 5 pcs.	
② <b>C 1.123</b>	0004500200
Ignition wire, platinum, 2 pcs.	

C 6000 Accessories and consumables	
	Ident. No.
<b>C 6010</b>	0003770000
Decomposition vessel, standard	
<b>C 6012</b>	0004504000
Decomposition vessel, halogen resistant	
<b>C 6030</b>	0004504100
Gas washing station	
<b>C 60.1012</b>	0004504200
Organizer	
<b>C 6000.10</b>	0004504300
Set of spare parts, approx. 1000 experiments	
<b>C 6000.12</b>	0004504400
Set of spare parts, approx. 1000 experiments	

## Accessories for all Calorimeters

	Ident. No.
<b>C 29</b>	0000750200
Pressure gauge, oxygen	
<b>KV 600</b>	0003410500
Cooling water supply, 230 V	
<b>C 21</b>	0001605300
Pelleting press	
<b>C 5010.8</b>	0004579800
Crucible holder, small	
<b>C 5010.5</b>	0003055900
Crucible holder, big	

C 200 accessories	
	Ident. No.
<b>C 248</b>	0003520000
Oxygen station	
<b>C 200.1</b>	0003548900
Measuring cup, 2000 ml	
<b>C 200.2</b>	0004028800
Conversion kit for C 5012	



## C 200, C 2000, C 5000 accessories

	Ident. No.
<b>C 5010</b>	0007114000
Decomposition vessel, standard	
<b>C 5012</b>	0007215000
Decomposition vessel, halogen resistant	
<b>C 5030</b>	0007198000
Venting station	
<b>C 5010.4</b>	0003016900
Attachment for combustible crucible C 14	
<b>C 5010.5</b>	0003055900
Crucible holder, big	
<b>C 26</b>	0008804000
Prep stand	

## C 2000, C 5000, C 6000 accessories

	Ident. No.
<b>C 5020</b>	0007145000
Sample rack	

## C 2000, C 6000 accessories

	Ident. No.
<b>C 25</b>	0003197200
Pressure regulating valve	

## C 7000 accessories

	Ident. No.
<b>C 7000</b>	0003008000
Measurement cell	
<b>C 7010</b>	0003015000
Decomposition vessel, standard	
<b>C 7012</b>	0003017000
Decomposition vessel, halogen resistant	
<b>C 7002</b>	0007011000
Cooling system	
<b>C 48</b>	0001560000
Oxygen station	
<b>C 7030</b>	0003013300
Venting handle	
<b>C 7010.8</b>	0007095000
Venting station	
<b>C 5010.4</b>	0003016900
Attachment for combustible crucible C 14	
<b>C 5010.5</b>	0003055900
Crucible holder, big	

## Consumables for all Calorimeters

	Ident. No.
③ <b>C 5003.1</b>	0007207700
Aqua Pro stabilizing agent, 2 x 20 ml, except for C1	
④ <b>C 710.4</b>	0001483700
Cotton thread, cut to length, 500 pcs.	

<b>C 710.8</b>	0004579900
Cotton thread, cut to length, thick, 500 pcs.	
⑤ <b>C 4</b>	0001695500
Quartz dish	
⑥ <b>C 5</b>	0001749500
Set of VA combustion crucibles, 25 pcs.	
⑦ <b>C 6</b>	0000355100
Quartz dish, big	
⑧ <b>C 710.2</b>	0001483500
Set of VA combustion crucibles, 25 pcs.	
⑨ <b>C 9</b>	0000749900
Gelatine capsules, 100 pcs.	
⑩ <b>C 10</b>	0000750000
Acetobutyrate capsules, 100 pcs.	
<b>C 12</b>	0002201400
Combustion bags, 40 x 35 mm, 100 pcs	
<b>C 12 A</b>	0002201500
Combustion bags, 70 x 40 mm, 100 pcs	
<b>C 15</b>	0003131100
Paraffin strips, 45 x 3 mm, 600 pcs.	
<b>C 16</b>	0003801100
Parafilm, 1000 x 50 mm	
⑪ <b>C 17</b>	0003801200
Paraffin, liquid, 30 ml	



AVAILABLE 2014



# Calorimeters | Accessories and consumables

# IKA® offers more



## Comprehensive Worldwide Service

Our dedicated team of engineers provides comprehensive worldwide technical service. Please feel free to contact your dealers or IKA® directly in case of any service queries.

Hotline: In the event of an equipment malfunction or technical questions regarding devices and spare parts:  
call 00 8000 4524357 (00 8000 IKAHELP)



## IKA® Application Support

Our Application Center spans 400 sqm and offers modern facilities for presenting and testing lab devices and processes. This brings us even closer to our customers and improves our service. Here, prospective buyers and customers can test out processes that involve stirring, shaking, dispersing, grinding, heating, analyzing and distilling. In addition, it also further extends the opportunity to test your own devices and to develop new models.



### Calorimeter instructions

Instruction on the IKA® Calorimeter system

### Decomposition system

	Ident. No.
AOD 1	0008801300
Decomposition system	

### Decomposition accessories

	Ident. No.
AOD 1.1	0003303000
Decomposition vessel	
AOD 1.2	0003348000
External ignition unit	
AOD 1.3	0003308000
Protection device	
AOD 1.13	0003348100
Remote ignition head	



### C 6040 CalWin

Hardware and software requirements:  
requirements: Windows XP (SP2), Windows Vista, Windows 7, Windows 8 and at least one free USB or RS 232 (9 pin Sub-D (M)) serial interface. Processor with min. 1.6 GHz (single core-Processor); 2 GB RAM; 2.5 GB free hard-disc space; DVD-ROM-drive  
Ident. No. 0004040500

12	C 43	0000750600
Benzoic acid, NIST 39j, 30 g		
13	C 723	0003243000
Benzoic acid, blister package, 0.5 g, 50 pcs.		
	C 723 Big pack	0003717400
Benzoic acid, blister package, 0.5 g, 450 pcs.		
14	AOD 1.11	0003044000
Control standard, 50 ml, for Sulfur and chlorine		
15	AOD 1.12	0003080200
Control standard, 50 ml, for fluorine and bromine		

### C 200, C 2000, C 5000 and C 7000 consumables

		Ident. No.
C 5010.3	Ignition wire, spare, 5 pcs.	0007122800
C 5012.3	Ignition wire, platinum, 2 pcs.	0002994900
C 14	Combustible crucible, 100 pcs.	0007224500
C 58	Set of wearing parts	0003296300
C 59	Combustion crucibles for C 62	0003266000
C 08	Pure iron ignition wire, 200 m coil	0000749600

# IKA® Packages

Package name / Package description	Ident. No.
<b>RCT Synthesis Package 1</b>	0008039600
RCT basic	0003810000
H 16 V Support rod	0001545100
H 44 Boss head clamp	0002437700
H 38 Holding rod	0003547700
H 135.10 Square Carrier without handle	0025000832
H 135.101 Block 16 x 4 ml	0025000626
H 135.104 Block 4 x 20 ml	0025000629
H 135.105 Block 4 x 30 ml	0025000630
H 135.106 Block 4 x 40 ml	0025000631

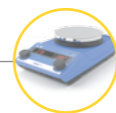
Package name / Package description	Ident. No.
<b>RCT Synthesis Package 2</b>	0008039700
RCT basic	0003810000
H 16 V Support rod	0001545100
H 44 Boss head clamp	0002437700
H 38 Holding rod	0003547700
H 135.30 Flask Carrier 500 ml without Handle	0025000639
H 135.302 Flask inlay 250 ml	0025000642
H 16.1 Extension	0005000500

Package name / Package description	Ident. No.
<b>C-MAG HS 7 Package</b>	0009015900
C-MAG HS 7	0003581200
ETS-D5 Electronic contact thermometer	0003378000
H 38 Holding rod	0003547700
H 44 Boss head clamp	0002437700
H 16 V Support rod	0001545100

Package name / Package description	Ident. No.
<b>RW 28 digital Package</b>	0009023200
RW 28 digital (drive)	0005040000
R 2723 Telescopic stand	0001412100
R 1385 Propeller stirrer	0000477700
R 271 Boss head clamp	0002664000
<b>RW 47 digital Package</b>	0009023300
RW 47 digital (drive)	0004050000
R 2302 Propeller stirrer	0000739000
R 474 Telescopic stand	0001643000



Magnetic stirrers with heating  
page 6 & 8



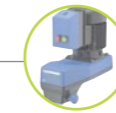
Mechanical Overhead stirrers  
page 27



Shakers  
page 36



T-series ULTRA-TURRAX® Dispersers  
page 46 & 47



Package name / Package description	Ident. No.
<b>KS 130 basic Package</b>	0009019000
KS 130 basic	0002980000
AS 130.3 Dish attachment	0003120000
STICKMAX universal adhesive mat	0003920000

Package name / Package description	Ident. No.
<b>KS 130 control Package</b>	0009025500
KS 130 control	0004278200
AS 130.3 Dish attachment	0003120000
STICKMAX universal adhesive mat	0003920000

Package name / Package description	Ident. No.
<b>KS 260 basic Package</b>	0009019200
KS 260 basic	0002980200
AS 260.3 Dish attachment	0003120600
2 x STICKMAX universal adhesive mat	0003920000

Package name / Package description	Ident. No.
<b>KS 260 control Package</b>	0009025600
KS 260 control	0004278400
AS 260.3 Dish attachment	0003120600
2 x STICKMAX universal adhesive mat	0003920000

Package name / Package description	Ident. No.
<b>T 10 standard PCR kit</b>	0004095500
S 10 D - 7 G - KS - 65 Dispersing tool	0003380600
S 10 D - 7G - KS - 110 Dispersing tool	0003380700
Disposable Generator 7 x 65 mm (12 pcs.)	0003380612
R 200 clamp	0003372000

Package name / Package description	Ident. No.
<b>T 18 digital Package</b>	0009022800
T 18 digital	0003720000
S 18 N - 19 G Dispersing tool	000L004640

Package name / Package description	Ident. No.
<b>T 65 basic Package</b>	0009023400
T 65 basic	0004023500
S 65 KG - HH - G 65 G Dispersing tool	0008005500
T 653 Telescopic stand	0001608000

Package name / Package description	Ident. No.
<b>T 65 digital Package</b>	0009023500
T 65 digital	0004234500
S 65 KG - HH - G 65 G Dispersing tool	0008005500
T 653 Telescopic stand	0001608000



# IKA® Packages



Package name / Package description	Ident. No.
<b>IC basic eco 18 c</b>	0008036600
IC basic Head	0004472600
IB eco 18 Bath vessel, plastic	0004248200
PT 100.30 Temperature sensor	0004284700
CC 1 Cooling coil	0004365600
CL.IC Cover	0004471800
BS.IC Bridge	0004472800
<b>IC basic pro 12 c</b>	0008039900
IC basic Head	0004472600
IB pro 12 Bath vessel, stainless steel	0004577500
PT 100.30 Temperature sensor	0004284700
CC 1 Cooling coil	0004365600
CM.IC Cover	0004577600
BS.IC Bridge	0004472800
<b>IC basic pro 20 c</b>	0008036800
IC basic Head	0004472600
IB pro 20 Bath vessel, stainless steel	0004248600
PT 100.30 Temperature sensor	0004284700
CC 1 Cooling coil	0004365600
CL.IC Cover	0004471800
BS.IC Bridge	0004472800
<b>IC control eco 18 c</b>	0008037000
IC control Head	0004472700
IB eco 18 Bath vessel, plastic	0004248200
PT 100.30 Temperature sensor	0004284700
CL.IC Cover	0004471800
BS.IC Bridge	0004472800
<b>IC control pro 12 c</b>	0008040000
IC control Head	0004472700
IB pro 12 Bath vessel, stainless steel	0004577500
PT 100.30 Temperature sensor	0004284700
CL.IC Cover	0004471800
BS.IC Bridge	0004472800
<b>IC control pro 20 c</b>	0008037200
IC control Head	0004472700
IB pro 20 Bath vessel, stainless steel	0004248600
PT 100.30 Temperature sensor	0004284700
CL.IC Cover	0004471800
BS.IC Bridge	0004472800



RV 8

RV 10 basic



RV 10 digital

RV 10 control auto

Thermostats  
page 61



Package name / Package description	Ident. No.
<b>RV 8 V</b>	0008033800
RV 8	0004057099
HB 10 heating bath	0004068099
RV 10.1 Set of glassware, vertical	0003655300
RV 10.70 Vapor tube, NS 29/32	0003812200
<b>RV 8 V-C</b>	0008034200
RV 8	0004057099
HB 10 heating bath	0004068099
RV 10.10 Set of glassware, vertical, coated	0003755400
RV 10.70 Vapor tube, NS 29/32	0003812200
<b>RV 8 FLEX</b>	0008033400
RV 8	0004057099
HB 10 heating bath, incl. Woulff bottle	0004068099
RV 05.10 Balljoint clamp	0000736600
RV 10.88 Clamp, NS 29	0003683300
RV 10.70 Vapor tube, NS 29/32	0003812200
<b>RV 10 basic V</b>	0008040600
RV 10 basic	0003540099
HB 10 heating bath	0004068099
RV 10.1 Set of glassware, vertical	0003655300
RV 10.70 Vapor tube, NS 29/32	0003812200
<b>RV 10 basic V-C</b>	0008040700
RV 10 basic	0003540099
HB 10 heating bath	0004068099
RV 10.10 Set of glassware, vertical, coated	0003755400
RV 10.70 Vapor tube, NS 29/32	0003812200
<b>RV 10 digital V</b>	0008040300
RV 10 digital	0003550099
HB 10 heating bath	0004068099
RV 10.1 Set of glassware, vertical	0003655300
RV 10.70 Vapor tube, NS 29/32	0003812200
<b>RV 10 digital V-C</b>	0008040400
RV 10 digital	0003550099
HB 10 heating bath	0004068099
RV 10.10 Set of glassware, vertical, coated	0003755400
RV 10.70 Vapor tube, NS 29/32	0003812200
<b>RV 10 digital FLEX</b>	0008040500
RV 10 digital	0003550099
HB 10 heating bath, incl. Woulff bottle	0004068099
RV 05.10 Balljoint clamp	0000736600
RV 10.88 Clamp, NS 29	0003683300
RV 10.70 Vapor tube, NS 29/32	0003812200

Package name / Package description	Ident. No.
<b>RV 10 control V</b>	0008037700
RV 10 control	0004411099
HB 10 heating bath	0004068099
RV 10.1 Set of glassware, vertical	0003655300
RV 10.70 Vapor tube, NS 29/32	0003812200
RV 10.4002 Magnetic valve laboratory vacuum	0003880300
<b>RV 10 control V-C</b>	0008037900
RV 10 control	0004411099
HB 10 heating bath	0004068099
RV 10.10 Set of glassware, vertical, coated	0003755400
RV 10.70 Vapor tube, NS 29/32	0003812200
RV 10.4002 Magnetic valve laboratory vacuum	0003880300
<b>RV 10 control FLEX</b>	0008038100
RV 10 control	0004411099
HB 10 heating bath, incl. Woulff bottle	0004068099
RV 05.10 Balljoint clamp	0000736600
RV 10.88 Clamp, NS 29	0003683300
RV 10.70 Vapor tube, NS 29/32	0003812200
RV 10.4002 Magnetic valve laboratory vacuum	0003880300
<b>RV 10 control V auto</b>	0008037800
RV 10 control	0004411099
Pump with analog connection	0004406000
HB 10 heating bath	0004068099
RV 10.1 Set of glassware, vertical	0003655300
RV 10.70 Vapor tube, NS 29/32	0003812200
<b>RV 10 control V-C auto</b>	0008038000
RV 10 control	0004411099
Pump with analog connection	0004406000
HB 10 heating bath	0004068099
RV 10.10 Set of glassware, vertical, coated	0003755400
RV 10.70 Vapor tube, NS 29/32	0003812200
<b>RV 10 control FLEX auto</b>	0008038200
RV 10 control	0004411099
Pump with analog connection	0004406000
HB 10 heating bath, incl. Woulff bottle	0004068099
RV 05.10 Balljoint clamp	0000736600
RV 10.88 Clamp, NS 29	0003683300
RV 10.70 Vapor tube, NS 29/32	0003812200

Rotary Evaporators  
page 65 & 66



# IKA® Packages



C 1



C 6000



C 200



C 2000



C 5000

Calorimeters  
page 84 & 85



Package name / Package description	Ident. No.
<b>C 1 Package 1/10</b>	0008804900
C 1	0003825000
KV 600 Cooling water supply	0003410500
<b>C 1 h Package 1/12</b>	0008805000
C 1 h	0004505000
KV 600 Cooling water supply	0003410500
<b>C 1 Package 2/10</b>	0008805100
C 1	0003825000
C 1.20 Water heater	0004501000
<b>C 1 h Package 2/12</b>	0008805200
C 1 h	0004505000
C 1.20 Water heater	0004501000
<b>C 6000 global standards Package 1/10</b>	0008804100
C 6000 global standards	0003780000
C 6010 Decomposition vessel, standard	0003770000
KV 600 Cooling water supply	0003410500
<b>C 6000 global standards Package 1/12</b>	0008804200
C 6000 global standards	0003780000
C 6012 Decomposition vessel, halogen resistant	0004504000
KV 600 Cooling water supply	0003410500
<b>C 6000 global standards Package 2/10</b>	0008804300
C 6000 global standards	0003780000
C 6010 Decomposition vessel, standard	0003770000
<b>C 6000 global standards Package 2/12</b>	0008804400
C 6000 global standards	0003780000
C 6012 Decomposition vessel, halogen resistant	0004504000
<b>C 6000 isoperibol Package 1/10</b>	0008804500
C 6000 isoperibol	0004025000
C 6010 Decomposition vessel, standard	0003770000
KV 600 Cooling water supply	0003410500
<b>C 6000 isoperibol Package 1/12</b>	0008804600
C 6000 isoperibol	0004025000
C 6012 Decomposition vessel, halogen resistant	0004504000
KV 600 Cooling water supply	0003410500
<b>C 6000 isoperibol Package 2/10</b>	0008804700
C 6000 isoperibol	0004025000
C 6010 Decomposition vessel, standard	0003770000
<b>C 6000 isoperibol Package 2/12</b>	0008804800
C 6000 isoperibol	0004025000
C 6012 Decomposition vessel, halogen resistant	0004504000

Package name / Package description	Ident. No.
<b>C 200 h</b>	0008803700
C 200	0003385000
C 200.2 Conversion set for C 5012	0004028800
C 248 Oxygen station	0003520000
C 5012 Decomposition vessel, halogen resistant	0007215000
<b>C 2000 basic Version 1</b>	0008801800
C 2000 basic	0003180000
C 5012 Decomposition vessel, standard	0007114000
<b>C 2000 basic Version 2</b>	0008801900
C 2000 basic	0003180000
C 5012 Decomposition vessel, halogen resistant	0007215000
<b>C 2000 control Version 1</b>	0008802000
C 2000 control	0003190000
C 5010 Decomposition vessel, standard	0007114000
C 5040 CalWin, Calorimeter software	0003045000
<b>C 2000 control Version 2</b>	0008802100
C 2000 control	0003190000
C 5012 Decomposition vessel, halogen resistant	0007215000
C 5040 CalWin, Calorimeter software	0003045000
<b>C 5000 control Package 1/10</b>	0008803000
C 5000 Control	0003048000
C 5001 Cooling system	0007066000
C 5003 Measurement cell	0003595000
C 5010 Decomposition vessel, standard	0007114000
<b>C 5000 control Package 1/12</b>	0008803300
C 5000 Control	0003048000
C 5001 Cooling system	0007066000
C 5003 Measurement cell	0003595000
C 5012 Decomposition vessel, halogen resistant	0007215000
<b>C 5000 control Package 2/10</b>	0008803200
C 5000 Control	0003048000
C 5003 Measurement cell	0003595000
C 5004 Heat exchanger	0007216500
C 5010 Decomposition vessel, standard	0007114000
<b>C 5000 control Package 2/12</b>	0008803400
C 5000 Control	0003048000
C 5003 Measurement cell	0003595000
C 5004 Heat exchanger	0007216500
C 5012 Decomposition vessel, halogen resistant	0007215000

We look forward to helping you find the perfect device for your application.



## Application Support

For questions regarding applications and processes, you can call our hotline number:  
**00 8000 4522777 (00 8000 IKAAPPS)\***  
E-Mail: [applicationsupport@ika.de](mailto:applicationsupport@ika.de)

\* Monday – Thursday from 8:30 - 16:30  
Friday from 8:30 - 15:30

We will process your inquiry within 48 hours of receiving it.

You may also send us your sample. We will test it for you with a device suitable for your application.

More information can be found at:

[www.ika.com](http://www.ika.com)



Subject to technical changes  
Indications not binding for delivery

**IKA®+**

**Ordering made easy**

For more information about  
our products and to place  
your order, please visit:

[www.ika.com](http://www.ika.com)



IKA® Product Overview 2013/2 EN

201308\_Product\_Overview\_2013\_2\_EN\_wop



[www.facebook.com/IKAworldwide](http://www.facebook.com/IKAworldwide)

IKA®-Werke GmbH & Co. KG  
Janke & Kunkel-Str. 10  
79219 Staufen  
Germany

Tel. +49 7633 831-0  
Fax +49 7633 831-98

[sales@ika.de](mailto:sales@ika.de)  
[www.ika.com](http://www.ika.com)



[www.ika.com](http://www.ika.com)

**IKA®** German technology